

# KEIHAN GROUP COMPREHENSIVE GUIDE

Keihan Group Comprehensive Guide (From April 2026)



For reservations/inquiries regarding Keihan Group's hotels and leisure facilities:

## Keihan Holdings Co., Ltd.

Experiential Value Co-creation Supervisor, Corporate Planning Office  
Keihan Group Sales Promotion Center for Tourism

TEL: (+81) 6-6945-9696

FAX: (+81) 6-6944-2584

E-MAIL: [travel@keihan.co.jp](mailto:travel@keihan.co.jp)

OMM Bldg. 10F, 1-7-31 Otemae, Chuo-ku, Osaka, 540-6591, Japan

Keihan Railway <https://www.keihan-holdings.co.jp/>

Keihan Group Facility Introduction (for Travel Agents) <https://www.keihan.co.jp/agent/en/> ▶▶

Keihan Group Reservations <https://reserve.keihan.co.jp/>



# Keihan Group Businesses

The Keihan Group's businesses are part of our customers' everyday life as well as their ceremonial occasions in Osaka, Kyoto, Shiga, and all other areas of Japan.

We will make proposals for a new kind of sightseeing filled with the appeal that only a company that is rooted in its community can offer.

Feel free to get in touch with us.

## SAPPORO

- Hotel Keihan Sapporo

## FUKUI

- Hotel Keifuku Fukuiekimae  
- Echizen Matsushima Aquarium

## SENDAI

- Hotel Keihan Sendai

## TOKYO

- Hotel Keihan Tsukiji Ginza Grande  
- Hotel Keihan Asakusa  
- Hotel Keihan Tokyo Yotsuya

## NAGOYA

- Hotel Keihan Nagoya



## Keihan Group Overview (as of March 31, 2025)

Consolidated subsidiaries	41 (including Keihan Holdings and companies using the equity method)
Employees (consolidated)	6,354
Operating revenue (consolidated)	¥313.5 billion
Main businesses	Transportation: Rail and bus, amusement facilities Real estate: Sales and leasing Distribution: Department stores, shops, shopping mall management Leisure services: Hotels and leisure Other: Credit cards

## 未来は、楽しく変えていこう。 KEIHAN BIOSTYLE PROJECT

The Keihan Group is working on a project called the BIOSTYLE PROJECT to help achieve the SDGs. Here you can find out about sustainable tourism.



\*Some facilities offer SDG training tours.

■ Getting to the Keihan Line from Osaka/Umeda  
■ Getting to the Keihan Line from Osaka/Umeda (Osaka Metro Midosuji Line) → Yodoyabashi (JR Loop Line) → Kyobashi

15 min. from Namba by Osaka Metro  
1 station from Osaka or Umeda Station by Osaka Metro

Hotel Keihan Universal Tower Osaka  
Sightseeing boat "Santa Maria"

Kansai International Airport



**CONTENTS**

- HOTEL — 4
- RAILWAY/ BUS — 24
- LEISURE — 32
- DISTRIBUTION — 45

■ Getting to the Keihan Line from Kansai International Airport (Nankai Main Line) → Namba → (Osaka Metro Midosuji Line) → Yodoyabashi (Nankai Main Line) → Tengachaya → (Osaka Metro Sakaisuji Line) → Kitahama (JR Hanwa Line) → Tennoji → (JR Osaka Loop Line) → Kyobashi

# Hotel Keihan Universal Tower | Osaka

From top-floor Tower Premium rooms inspired by luxurious passenger ships to rooms with low beds perfect for small children and rooms for up to six guests complete with bunk beds, this hotel is perfect for families and groups. The panoramic natural hot spring on the 31st floor (separate fee applies) also boasts a sauna.

The official hotel of Universal Studios in the area's tallest building, just a few moments on foot from JR Universal City



Hotel Keihan Universal Tower is the official hotel of Universal Studios Japan

\*All photos are for illustrative purposes only.

Universal elements and all related indicia TM & © 2025 Universal Studios. All rights reserved.



## GUEST ROOM

The renovation of all rooms with the concept of the underwater world and luxury cruise ships has been completed this year.



Superior room



[Tower Premium] Superior room

### No. of guest rooms: 641 (Hotel capacity: 2,365 people)

- Casual rooms (21 m<sup>2</sup>): 10
- [Theater] Casual rooms (21 m<sup>2</sup>): 13
- Standard rooms (25 m<sup>2</sup>): 121
- Superior rooms (37 m<sup>2</sup>): 87
- [Bunkbeds] Standard rooms (25 m<sup>2</sup>): 33
- [Bunkbeds] Superior rooms (37 m<sup>2</sup>): 66
- Connecting rooms (37 m<sup>2</sup> + 25 m<sup>2</sup>): 41
- [Low bed] Standard triple rooms (25 m<sup>2</sup>): 66
- [Low bed] Superior quad rooms (37 m<sup>2</sup>): 65
- [Tower Premium] Standard rooms (25 m<sup>2</sup>): 71
- [Tower Premium] Superior rooms (37 m<sup>2</sup>): 51
- [Tower Premium] Deluxe rooms (37 m<sup>2</sup>): 12
- [Tower Premium] Junior suite (74 m<sup>2</sup>): 4
- Barrier-free rooms (37 m<sup>2</sup>): 1

Check-in: 15:00 / Check-out: 11:00

## RESTAURANT



### Sky Restaurant Top of Universal (max. seats: 130)

This top-floor restaurant is 120 meters above ground level and offers a night view of the city. At the live cooking station, our chefs finish and serve dishes right in front of you. Enjoy a buffet that features seasonal ingredients.

## BANQUET HALL



Fantasy Hall

Three venues are available for different purposes and usage styles. Choose from Fantasy Hall, which can host buffet parties for up to 250 guests, the mid-size Dream Hall, and Harmony Hall, which is perfect for business meetings and small banquets.

### Facilities

Name of venue	Size (m <sup>2</sup> )	Room height (m)	Width (m)	Length (m)	Capacity (no. of people)					
					Banquet	Seated	Standing	School	Theater	Square seating arrangement
Fantasy Hall (whole)	355	4.5	24.7	14.4	200	170	250	270	400	108
Fantasy Hall (A)	205	4.5	14.2	14.4	100	80	150	150	250	72
Fantasy Hall (B)	150	4.5	10.5	14.4	60	50	100	96	150	54
Dream Hall (Whole)	165	3.4	17.2	9.6	80	80	100	120	170	72
Dream Hall (A)	105	3.4	10.9	9.6	50	40	60	84	100	54
Dream Hall (B)	60	3.4	6.3	9.6	30	30	40	36	30	36
Harmony Hall	60	3.4	6.3	9.6	30	30	40	36	40	36

## HOT SPRING SPA



Enjoy the luxury of a natural hot spring from 1,000m below ground level at 110m above ground. Relax in any of the facilities on offer, including a vibra-bath and a sauna.

Prices (inc. a free drink)  
Adult: ¥2,000,  
Child 3 years - elementary school: ¥1,000  
\*Additional bathing tax per adult: ¥150

## ACCESS MAP



### By train

From Shin-Osaka Station: Approx. 20 min.  
(JR Tokaido Line) → JR Osaka Station → JR Nishikujo Station → JR Universal City Station → short walk

### By plane

From Osaka International Airport: Approx. 45 min.  
(Airport Limousine Bus) → Universal Studios Japan Traffic Square → Approx. 10 min, on foot  
From Kansai International Airport: 1) Approx. 80 min. 2) Approx. 70 min.  
1) (Airport Limousine Bus) → Universal Studios Japan Traffic Square → Approx. 10 min, on foot  
2) (Kansai Airport Rapid Service) → Nishikujo Station → JR Universal City Station → short walk

### By car

Close to the Hanshin Expressway Universal City Exit

\*Hotel parking lot (158 spaces)  
\*Overnight guests: Max. 3,500 yen up to 24 hours after entry (the maximum charge is applied every 24 hours) After 24 hours, an additional fee of 200 yen applies every 20 minutes.  
(Please note that parking spaces are not guaranteed if you leave the parking lot during your stay.)  
\*Banquet guests will receive a ticket for 4 hours of free parking.  
\*Restaurant guests will receive a ticket for 2 hours of free parking if their bill is ¥3,000 or more.  
\*Parking outside the above hours is charged at ¥200 for 20 minutes.  
\*First-come-first-served (reservations not possible), height limit applies (2.1 m limit). If the hotel parking lot is full, we will let you know of other parking lots in the neighborhood.

### Nearby tourist attractions

- Universal Studios Japan (approx. 2 min, on foot)
- Universal Citywalk Osaka (short walk)
- Osaka Aquarium Kaiyukan (approx. 10 min, by boat (Capt. Line))
- Tempozan (approx. 10 min, by boat (Capt. Line))

# Hotel Keihan Kyobashi Grande | Osaka

The hotel is connected directly to the station, with an adjacent shopping mall, making it perfect for sightseeing, business, leisure, and a range of other travel.

Directly connected to Keihan Kyobashi Station, 1 min. on foot from JR Kyobashi Station

\*All photos are for illustrative purposes only.



## GUEST ROOM



Single room



Compact twin

A full range of facilities and sophisticated, modern guest rooms. Experience exceptional hospitality on the Superior Floor at the top of the hotel. Ladies' Rooms for the exclusive use of women are also available.

### No. of guest rooms: 214 (Hotel capacity: 395 people)

- Single rooms (17 m<sup>2</sup>): 171 (inc. 115 compact twin rooms)
- Twin sofa bed rooms (tentative name): 20
- Twin rooms (19 - 36 m<sup>2</sup>): 23

Check-in: 15:00 / Check-out: 11:00

## RESTAURANT



### Restaurant Lorraine (max. seating capacity: 100)

With the ambience of spring in Scandinavia, this casual restaurant offers a varied and wide ranging buffet. Eat until your heart is content at this spacious restaurant offering panoramic views over Osaka's Kyobashi area.

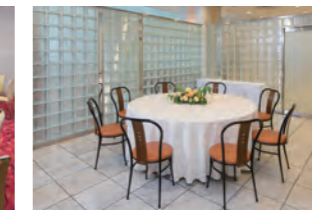
## BANQUET HALL



Kagayaki-no-ma



Suisho-no-ma



Crystal Room

Large, medium, and small banquet rooms are available to host exhibitions, lectures, conferences, and other events.

### Facilities

Name of venue	Size (m <sup>2</sup> )	Room height (m)	Width (m)	Length (m)	Capacity (no. of people)					
					Banquet	Seated	Standing	School	Theater	Square seating arrangement
Kagayaki-no-ma (whole)	300	4.0~5.0	11.5	26.0	144	180	250	200	350	84
Kagayaki-no-ma (east)	200	4.0~5.0	11.5	16.2	72	90	120	120	200	60
Kagayaki-no-ma (west)	100	4.0~5.0	11.5	9.2	40	50	60	60	100	42
Suisho-no-ma	72	2.9	10.3	6.5	32	50	48	48	80	36
Crystal Room	20		4.2	7.1		10				10
Function Room	36									10

## ACCESS MAP



### By train

From Shin-Osaka Station: Approx. 15 min.  
(JR Tokaido Line) → JR Osaka Station → JR Kyobashi Station → 1 min, on foot  
\*Connected to Keihan Kyobashi Station, 3 min, on foot from Osaka Metro Kyobashi Station

### By plane

From Osaka International Airport: Approx. 40 min. (Airport Limousine Bus) → JR Osaka Sta. → JR Kyobashi Station → 1 min, on foot  
From Kansai International Airport: Approx. 80 min. (JR Kansai Airport Rapid Service) → JR Kyobashi Station → 1 min, on foot

### By car

Approx. 10 min. from Hanshin Expressway [Kitahama Ramp] \*No exclusive parking at hotel. Please use the Kyobashi Mall TIMES parking lot in the Kyobashi Station Building.

### Nearby tourist attractions

- OBP (Osaka Business Park) (approx. 5 min, on foot)
- Osaka Castle (approx. 25 min, on foot)
- Osaka-Jo Hall (approx. 15 min, on foot)
- Universal Studios Japan (approx. 20 min, by train)
- Hirakata Park (approx. 30 min, by train)
- Kyocera Dome (approx. 25 min, by train)
- Namihaya Dome (approx. 25 min, by train)
- Osaka International Convention Center (approx. 10 min, by train)
- Osaka Station (approx. 7 min, by train)
- Namba Station (approx. 15 min, by train)
- Tsutenkaku (approx. 25 min, by train)
- Kyoto Gion-shijo (approx. 50 min, by train)

# Hotel Keihan Tenmabashi

Osaka

Just 15 min. on foot from Osaka Castle.  
Conveniently located for business and sightseeing in the center of Osaka.

1 min. on foot from Temmabashi Station on Keihan Railway or Osaka Metro.



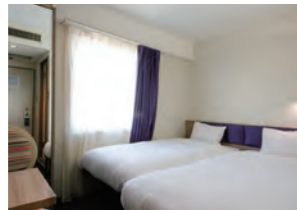
\*All photos are for illustrative purposes only.

## GUEST ROOM

Rooms are clean, secure, and comfortable.  
They are suitable for everything from business to leisure travel.



Single room



Mini twin

■ No. of guest rooms: 315  
(Hotel capacity: 611 people)

- Single rooms (12 m<sup>2</sup>): 62
- Semi-double rooms (12 m<sup>2</sup>): 190
- Mini twin rooms (12 m<sup>2</sup>): 62
- Casual twin rooms (17 m<sup>2</sup>): 21
- Triple rooms (17 m<sup>2</sup>): 21
- Standard twin rooms (24 m<sup>2</sup>): 2
- Connect rooms (24 m<sup>2</sup>): 20

Check-in: 15:00  
Check-out: 11:00

## RESTAURANT

**Madras Spice Tokyo Temmabashi Restaurant**  
(Max. seating capacity: 100)



Halal certified.  
Enjoy authentic  
Indian curry and  
freshly baked  
naan bread.

## ACCESS MAP



- **By train**
  - **From Shin-Osaka Station: Approx. 20 min.**  
(JR Tokaido Line) → JR Osaka Station / Osaka Metro Higashi-Umeda Station → Osaka Metro Temmabashi Station → Approx. 1 min. on foot
- **By plane**
  - **From Osaka International Airport: Approx. 40 min.**  
(Airport Limousine Bus) → JR Osaka Station / Osaka Metro Higashi-Umeda Station → Osaka Metro Temmabashi Station → Approx. 1 min. on foot
  - **From Kansai International Airport: Approx. 60 min.**  
(JR Kansai-Airport Express "Haruka") → JR Tennoji Station / Osaka Metro Tennoji Station → Osaka Metro Temmabashi Station → Approx. 1 min. on foot
- **By car**
  - **Approx. 5 min. from Hanshin Expressway Hoenzaka Exit**
  - Hotel parking lot (10 spaces) / 2,500 yen/night. First-come-first-served (reservations not possible). If the hotel parking lot is full, we will let you know of other parking lots in the neighborhood.
- **Nearby tourist attractions**
  - Osaka Castle Museum (approx. 20 min. on foot) ● Osaka Aqua Bus pier (approx. 3 min. on foot) ● Osaka Prefectural Government (approx. 5 min. on foot)
  - Japan Mint (approx. 15 min. on foot)
  - Dawn Center (approx. 5 min. on foot) ● OMM building (approx. 2 min. on foot) ● Universal Studios Japan (approx. 30 min. by train)
  - Hirakata Park (approx. 30 min. by train) ● Central Public Hall (approx. 3 min. by train) ● The National Museum of Art, Osaka (approx. 7 min. by train)
  - Osaka International Convention Center (approx. 7 min. by train) ● Higashi-Umeda Station (approx. 5 min. by train) ● Namba Station (approx. 12 min. by train)

# Hotel Keihan Tenmabashi Ekimae

Osaka

1 min. on foot from Temmabashi Station on Keihan Railway or Osaka Metro.  
New in 2025: New guest rooms for up to six guests. Great for families and groups.

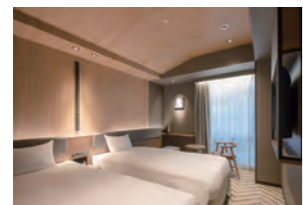
1 min. on foot from Temmabashi Station on Keihan Railway or Osaka Metro.



\*All photos are for illustrative purposes only.

## GUEST ROOM

Cozy guest rooms with the concept of a modern Japanese inn.



Twin rooms



Double rooms

■ No. of guest rooms: 298  
(Hotel capacity: 559 people)

- Double rooms (16 m<sup>2</sup>): 135
- Twin rooms (21 m<sup>2</sup>): 112
- Superior twin rooms (21 m<sup>2</sup>): 30
- Universal twin rooms (32 m<sup>2</sup>): 1
- Deluxe twin rooms (32 m<sup>2</sup>): 10
- Deluxe quad rooms (48 m<sup>2</sup>): 2

## RESTAURANT

**ITALIAN BUFFET GRAND CANAL**



Enjoy delicious food from Italy, renowned land of gastronomy, based on a theme of "noborder comfort," consistent comfort for everyone. We provide comfort and pleasantness through our food, services, and atmosphere, creating a place for travelers to refresh their mind and body.

## ACCESS MAP



- **By train**
  - **From Shin-Osaka Station: Approx. 20 min.**  
(JR Tokaido Line) → JR Osaka Station / Osaka Metro Higashi-Umeda Station → Osaka Metro Temmabashi Station → Approx. 1 min. on foot
- **By plane**
  - **From Osaka International Airport: Approx. 40 min.**  
(Airport Limousine Bus) → JR Osaka Station / Osaka Metro Higashi-Umeda Station → Osaka Metro Temmabashi Station → Approx. 1 min. on foot
  - **From Kansai International Airport: Approx. 60 min.**  
(JR Kansai-Airport Express "Haruka") → JR Tennoji Station / Osaka Metro Tennoji Station → Osaka Metro Temmabashi Station → Approx. 1 min. on foot
- **By car**
  - **Approx. 5 min. from Hanshin Expressway Hoenzaka Exit**
- **Nearby tourist attractions**
  - Osaka Castle Museum (approx. 20 min. on foot) ● Osaka Aqua Bus pier (approx. 3 min. on foot) ● Osaka Prefectural Government (approx. 5 min. on foot)
  - Japan Mint (approx. 15 min. on foot)
  - Dawn Center (approx. 5 min. on foot) ● OMM building (approx. 2 min. on foot) ● Universal Studios Japan (approx. 30 min. by train)
  - Hirakata Park (approx. 30 min. by train) ● Central Public Hall (approx. 3 min. by train) ● The National Museum of Art, Osaka (approx. 7 min. by train)
  - Osaka International Convention Center (approx. 7 min. by train) ● Higashi-Umeda Station (approx. 5 min. by train) ● Namba Station (approx. 12 min. by train)

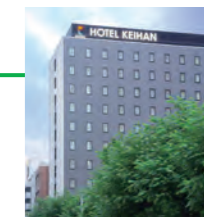
For details of nearby banquet venues and conference rooms, see OMM on page 43.

# Hotel Keihan Yodoyabashi

Osaka

With a great location offering direct train access to Shin-Osaka, Namba, and central Kyoto, this hotel offers a fulfilling stay that suits guests' needs.

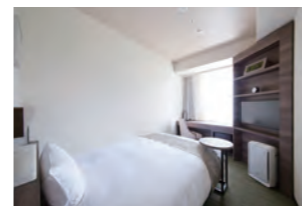
5 min. on foot from Yodoyabashi Station and 2 min. on foot from Kitahama Station on the Keihan Railway and Osaka Metro.



\*All photos are for illustrative purposes only.

## GUEST ROOM

Rooms on the Premium Floor at the top of the hotel feature airweave mattresses.



Single room



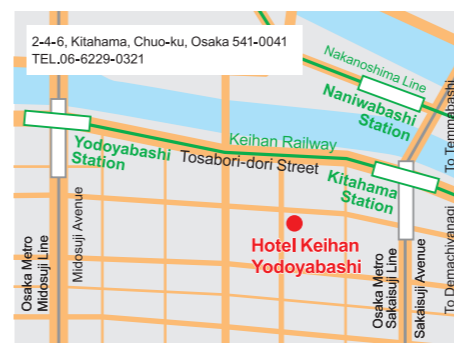
Twin room

■ No. of guest rooms: 210  
(Hotel capacity: 498 people)

- Single (14 m<sup>2</sup>): 90
- Double rooms (18 m<sup>2</sup>): 20
- Economy twin rooms (18 m<sup>2</sup>): 20
- Twin rooms (20 m<sup>2</sup>): 79
- Universal rooms (22 m<sup>2</sup>): 1

Check-in: 15:00  
Check-out: 11:00

## ACCESS MAP



- **By train**
  - **From Shin-Osaka Station: Approx. 15 min.**  
Osaka Metro Shin-Osaka Station → Osaka Metro Yodoyabashi Station → Approx. 5 min. on foot
- **By plane**
  - **From Osaka International Airport: Approx. 50 min.**  
(Airport Limousine Bus) → JR Osaka Station / Osaka Metro Umeda Station → Osaka Metro Yodoyabashi Station → Approx. 5 min. on foot
  - **From Kansai International Airport: 1) Approx. 85 min. 2) Approx. 75 min.**  
1) (Airport Limousine Bus) → JR Osaka Station / Osaka Metro Umeda Station → Osaka Metro Yodoyabashi Station → Approx. 5 min. on foot  
2) (Nankai Airport Line) → Nankai Tengachaya Station / Osaka Metro Tengachaya Station → Osaka Metro Kitahama Station → Approx. 2 min. on foot
- **By car**
  - **Approx. 5 min. from Hanshin Expressway Hommachi Exit**
  - Hotel parking lot (4 spaces)
  - \*Overnight guests: ¥2,000 per night (from 15:00 on date of stay to 11:00 the following day), first-come-first-served (reservations not possible), height limit applies (2.0 m limit).

# Hotel Keihan Namba Grande

Osaka

The interior of this hotel has a garden-themed design concept.  
Guests can enjoy concept rooms that offer a kitchen area and washing machine for long-term stays, bunk bedrooms, and a dedicated lounge on the Club Floor at the very top of the hotel.

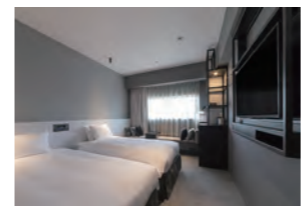
About 10 min. on foot from Nankai Railway and Osaka Metro Namba Station.



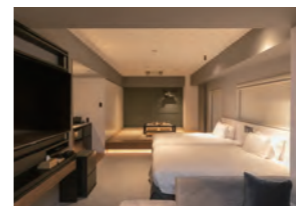
\*All photos are for illustrative purposes only.

## GUEST ROOM

All rooms feature a separate bathroom and toilet. The Club Floor at the very top offers an exquisite hotel experience with a range of quality amenities.



Twin room



Twin room + Japanese-style room

■ No. of guest rooms: 227  
(Hotel capacity: 645 people)

- Double rooms (16.9 m<sup>2</sup>): 49
- Twin rooms (20 m<sup>2</sup>): 160
- \* Out of the 160 rooms, 12 of the rooms can be connected to form 6 pairs of rooms.
- Universal rooms (20 m<sup>2</sup>): 3
- Twin rooms with a Japanese-style raised-floor seating area (42 m<sup>2</sup>): 2
- Family rooms (44 m<sup>2</sup>): 4
- Bunkbed rooms (44 m<sup>2</sup>): 2
- Hollywood twin rooms (30 m<sup>2</sup>): 4
- King bed rooms (30 m<sup>2</sup>): 3

Check-in: 15:00  
Check-out: 11:00

## ACCESS MAP



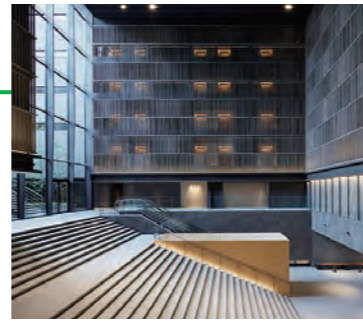
- **By train**
  - **From Shin-Osaka Station: Approx. 25 min.**  
Osaka Metro Shin-Osaka Station → Osaka Metro Namba Station → Approx. 10 min. on foot
- **By plane**
  - **From Osaka International Airport: Approx. 60 min.**  
(Airport Limousine Bus) → JR Osaka Station / Osaka Metro Umeda Station → Osaka Metro Namba Station → Approx. 10 min. on foot
  - **From Kansai International Airport: 1) Approx. 95 min. 2) Approx. 45 min.**  
1) (Airport Limousine Bus) → JR Osaka Station / Osaka Metro Umeda Station → Osaka Metro Namba Station → Approx. 10 min. on foot  
2) (Nankai Railway Nankai Airport Limited Express Rapid) → Namba Station → approx. 6 min. on foot
- **By car**
  - **Approx. 2 min. from Hanshin Expressway Nanba Exit**
  - \* No exclusive parking at hotel. We will let you know of our affiliated parking lots. (Ordinary motor vehicles only)

# The Thousand Kyoto

Kyoto

Approx. 2 minutes on foot from JR Kyoto Station.  
A space full of the hospitality of Kyoto,  
the Thousand Year Capital.

A hotel aiming to offer sustainable comfort into the next millennium.  
An experience of comfort for people, society, and the future.



## GUEST ROOM



Harmony suite double



Superior twin room

Guest rooms incorporate the beauty of subtraction found in Zen and the tea ceremony, and the wisdom from Kyoto machiya houses that harmonize nature and functional beauty. A range of suites and premier rooms are available, including rooms overlooking the garden and rooms with both Japanese and Western-style areas.

■ No. of guest rooms: 222 (Hotel capacity: 473 people)

- Superior rooms (36 - 37 m<sup>2</sup>): 180
- Deluxe rooms (42 - 44 m<sup>2</sup>): 19
- Premium rooms (40 - 50 m<sup>2</sup>): 12
- Suite rooms (54 - 85 m<sup>2</sup>): 11

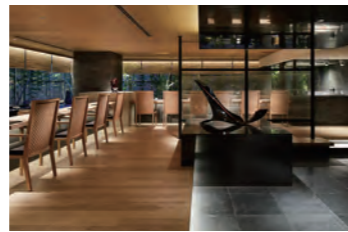
Check-in: 15:00 / Check-out: 12:00

## RESTAURANT



**Scalae**  
(Max. seating capacity: 110)

With the sounds and smells of a lively open kitchen, this Italian restaurant brings maximum flavor out of the ingredients used. Also available are connectable private rooms for your use.



**Kizahashi**  
(Max. seating capacity: 60)

Enjoy seasonal Japanese cuisine with a delicate touch that uses seasonal ingredients from Kyoto and other areas of Japan. The 3 private rooms provide comfort and are filled with sophistication and warmth. This restaurant is suitable for a range of occasions.

## BANQUET HALL



Sen



Kacho



Salon Minami

The banquet halls can be used for a wide range of occasions, including grand ceremonies, receptions, exhibitions, conferences, and seminars. There are also small banquet rooms that can accommodate meals and meetings for smaller groups.

### Facilities

Name of venue	Size (m <sup>2</sup> )	Room height (m)	Width (m)	Length (m)	Max. capacity (no. of people)					
					Round tables	Buffet	School	Theater	U-shaped seating arrangement	Square seating arrangement
Sen	230	3.6	21.1	10.9	150	160	150	320	60	78
Kacho	387	3.5	24.2	16.0	280	300	280	480	75	96
Fugetsu	108	2.4	14.4	7.5	60	60	50	120	40	48
Yuzuha	44	2.2	6.7	6.6	30	30	24	50	18	24

Name of venue	Size (m <sup>2</sup> )	Room height (m)	Width (m)	Length (m)	Max. capacity (no. of people)					
					Round tables	Buffet	School	Theater	U-shaped seating arrangement	Square seating arrangement
Oribe	46	2.2	7.0	6.6	30	30	24	50	18	24
Moegi	36	2.2	6.4	5.7	20	20	18	30	15	20
Wakakusa	36	2.2	6.4	5.7	20	20	18	30	15	20
Tsudoi	48	2.2	6.0	8.0	30	30	24	40	18	24
Salon Minami	27	2.5	4.1	6.6	Boardroom style 10					

## ACCESS MAP



- By train
  - Approx. 2 min. on foot from JR Kyoto Station Central Exit
- By plane
  - From Osaka International Airport: Approx. 50 min. (Airport Limousine Bus) → JR Kyoto Sta. Hachijoguchi Exit → Approx. 5 min. on foot
  - From Kansai International Airport: 1) Approx. 85 min. 2) Approx. 75 min.
    - 1) (Airport Limousine Bus) → Kyoto Sta. Hachijoguchi Exit → Approx. 5 min. on foot
    - 2) (JR Kansai-Airport Express "Haruka") → JR Kyoto Station → Approx. 2 min. on foot
- By car
  - Approx. 20 min. from Kyoto-minami Interchange on the Meishin Expressway
    - Hotel parking lot (approx. 50 spaces) \*Large bus drop off and pick up (1 space)
    - \*Overnight guests: ¥2,000 per night (inc. tax) 15:00 - 12:00 following day Parking will be discounted for customers using the restaurant. First-come-first-served (reservations not possible), height limit applies (2.2 m limit).
- Nearby tourist attractions
  - Nidec Kyoto Tower (approx. 5 min. on foot) ● Higashi Hongan-ji Temple (approx. 15 min. on foot) ● Nishi Hongan-ji Temple (approx. 20 min. on foot)
  - To-ji Temple (approx. 20 min. on foot)
  - Sanjusangen-do Temple (approx. 5 min. by bus) ● Kyoto National Museum (approx. 5 min. by bus) ● Tofuku-ji Temple (approx. 2 min. by train or 5 min. on foot)

\*All photos are for illustrative purposes only.

# Kyoto Century Hotel

Kyoto

2 minutes on foot from JR Kyoto Station.  
This hotel is based on the theme of a nostalgic journey.

Guests can enjoy a unique experience enveloped in warmth and kindness woven with nearly a century of history.



## GUEST ROOM



Grand Comfort Superior Twin Room



Kyo-Premium twin room

With an emphasis on "BIOSTYLE", this hotel offers high quality amenities, guest rooms, and beds while taking sustainability into consideration. A total of 214 rooms offering the same level of comfort and relaxation in any and all situations.

■ No. of guest rooms: 214  
(Hotel capacity: 428 guest  
(max. when two people stay in each room))

- Twin rooms (20 - 30 m<sup>2</sup>): 131
- Double rooms (18 - 38 m<sup>2</sup>): 77
- Family rooms (54 m<sup>2</sup>): 1
- Suite rooms (48 - 79 m<sup>2</sup>): 5

Check-in: 15:00 / Check-out: 12:00

## RESTAURANT

All Day Dining La Jyho (La Jyho Live Kitchen seating capacity: 90, La Jyho Terrace seating capacity: 32)



All-day dining with a diverse range of menus from breakfast to dinner.



During lunch and dinner buffet, take a look at our live cooking station, where our chefs prepare wagyu beef and other meat dishes right in front of you with sizzling sounds and aromas.



La Jyho Terrace has a lush green garden view through floor-to-ceiling windows. You can enjoy casual house-made a la carte and multi-course menus.

Essex Main Bar (max. seating capacity: 52)



A modern interpretation of the formal bar style, offering a laid back atmosphere in which to enjoy wonderful drinks.

## ACCESS MAP



- By train
  - Approx. 2 min. on foot from JR Kyoto Station Central Exit
- By plane
  - From Osaka International Airport: Approx. 50 min. (Airport Limousine Bus) → JR Kyoto Sta. Hachijoguchi Exit → Approx. 5 min. on foot
  - From Kansai International Airport: 1) Approx. 85 min. 2) Approx. 75 min.
    - 1) (Airport Limousine Bus) → Kyoto Sta. Hachijoguchi Exit → Approx. 5 min. on foot
    - 2) (JR Kansai-Airport Express "Haruka") → JR Kyoto Station → Approx. 2 min. on foot
- By car
  - Approx. 20 min. from Kyoto-minami Interchange on the Meishin Expressway
    - Hotel parking lot (approx. 50 spaces)
    - \*Overnight guests: ¥2,000 per night (inc. tax) 15:00 - 12:00 following day Parking will be discounted for customers using the restaurant. First-come-first-served (reservations not possible), height limit applies (2.2 m limit).
- Nearby tourist attractions
  - Nidec Kyoto Tower (approx. 5 min. on foot) ● Higashi Hongan-ji Temple (approx. 15 min. on foot) ● Nishi Hongan-ji Temple (approx. 20 min. on foot)
  - To-ji Temple (approx. 20 min. on foot)
  - Sanjusangen-do Temple (approx. 5 min. by bus) ● Kyoto National Museum (approx. 5 min. by bus) ● Tofuku-ji Temple (approx. 2 min. by train or 5 min. on foot)

\*All photos are for illustrative purposes only.

HOTEL

HOTEL

RAILWAY / BUS

RAILWAY / BUS

LEISURE

LEISURE

DISTRIBUTION

DISTRIBUTION

# Kyoto Tower Hotel

Kyoto

Nidec Kyoto Tower is a landmark located immediately to the north of Kyoto Station, the main point of entry to Kyoto.

Directly connected by underground passage to JR lines and the subway, making it a perfect starting point from which to explore Kyoto. The hotel can be used for a variety of purposes according to guests' needs, including sightseeing and business.



\*All photos are for illustrative purposes only.

## GUEST ROOM

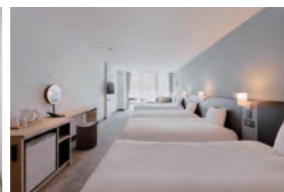
Kyoto Tower Hotel is at the bottom of a beautiful white tower just to the north of Kyoto Station. The hotel boasts rooms for everything from business trips to families.



Single room



Double room



Large twin room

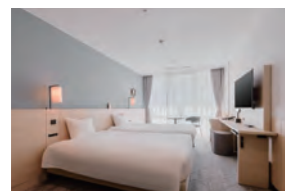


Japanese/Western-style room

■ No. of guest rooms: 161  
(Hotel capacity: 401 people)

- Single rooms (from 13 m<sup>2</sup>): 36
- Double rooms (from 15 m<sup>2</sup>): 30
- Twin rooms (from 19 m<sup>2</sup>): 90
- Family rooms (45 m<sup>2</sup>): 2
- Japanese/Western-style rooms (50 m<sup>2</sup>): 3

Check-in: 15:00  
Check-out: 11:00



Deluxe twin room



Deluxe family room



Double - Kyoto Tower Concept -



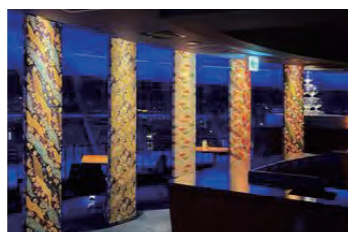
Standard twin - Kyoto Tower Concept

## RESTAURANT



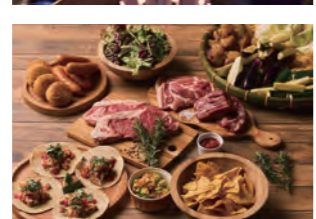
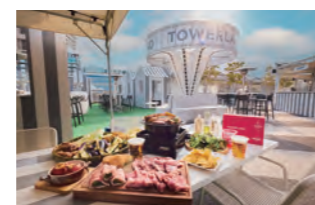
**Restaurant Tower Terrace**  
(Max. seating capacity: 108)

Asian specialties combined with Kyoto-style Japanese cuisine. Visitors can also enjoy a Gion Tsujiri tea bar and sweet dishes made with matcha green tea.



**Sky Lounge "KUU"**  
(Max. seating capacity: 54)

An interior unified through chic lighting creates an ambiance of sophistication in the Sky Lounge. With two types of counter seats, seats for couples, box seats, and table seats, it is perfect for use in any situation.



**TOWERLAND ROOFTOP BAR & BBQ**  
(Seating capacity: 234)

TOWERLAND -ROOFTOP BAR & BBQ is a sophisticated rooftop bar and BBQ restaurant that combines dining and entertainment. With the concept of "Look up and toast," the background with the tower and DJ performance add color to the open space.

## ACCESS MAP



■ By train

● Approx. 2 min. on foot from JR Kyoto Station Central Exit

■ By plane

● From Osaka International Airport: Approx. 65 min.

(Airport Limousine Bus) → JR Kyoto Sta. Hachijoguchi Exit → Approx. 10 min. on foot

● From Kansai International Airport: 1) Approx. 80 min. 2) Approx. 90 min.

1) (JR Kansai-Airport Express "Haruka") → JR Kyoto Station → Approx. 2 min. on foot

2) (Airport Limousine Bus) → Kyoto Sta. Hachijoguchi Exit → Approx. 10 min. on foot

■ By car

● Approx. 20 min. from Kyoto-minami or Kyoto-higashi Interchange on the Meishin Expressway \*No exclusive parking at hotel.

■ Nearby tourist attractions

● Higashi Hongan-ji Temple (approx. 5 min. on foot) ● Nishi Hongan-ji Temple (approx. 15 min. on foot) ● Sanjusangen-do Temple (approx. 5 min. by bus)

● Kyoto National Museum (approx. 5 min. by bus) ● To-ji Temple (approx. 2 min. by train or 5 min. on foot)

# Kyoto Tower Hotel Annex

Kyoto

A friendly home that focuses on warm hospitality

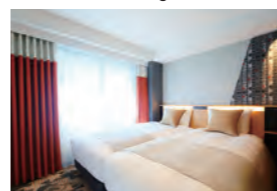
This hotel is located in a quiet area just off the main street in front of Kyoto Station. Our warm-hearted service and at-home atmosphere help guests relax and unwind after a tiring journey.

\*All photos are for illustrative purposes only.



## GUEST ROOM

The hotel's contemporary guest rooms inspired by cherry blossoms, ginkgo trees, and autumn leaves from Kyoto's seasonal scenery have been greatly improved to increase comfort and functionality in order to relieve fatigue and ensure a pleasant stay for guests.



Hollywood twin room



Standard twin room

■ No. of guest rooms: 126  
(Hotel capacity: 308 people)

- Double rooms (15 m<sup>2</sup>): 15
- Hollywood twin rooms (15 m<sup>2</sup>): 19
- Standard twin rooms (16 m<sup>2</sup>): 36
- Standard twin rooms (for 3 guests) (16 m<sup>2</sup>): 56

Check-in: 15:00  
Check-out: 11:00

## REGINA CO-WORKING AREA

■ Opening hours 11:00 - 20:00 (open on weekends and holidays)

Dedicated co-working area Wi-Fi available

Low usage fee from ¥600 for 1 hour.



## ACCESS MAP



■ By train

● Approx. 3 min. on foot from JR Kyoto Station Central Exit

■ By plane

● From Osaka International Airport: Approx. 65 min.

(Airport Limousine Bus) → JR Kyoto Sta. Hachijoguchi Exit → Approx. 10 min. on foot

● From Kansai International Airport: 1) Approx. 80 min. 2) Approx. 90 min.

1) (JR Kansai-Airport Express "Haruka") → JR Kyoto Station → Approx. 3 min. on foot

2) (Airport Limousine Bus) → Kyoto Sta. Hachijoguchi Exit → Approx. 10 min. on foot

■ By car

● Approx. 20 min. from Kyoto-minami or Kyoto-higashi Interchange on the Meishin Expressway \*No exclusive parking at hotel.

■ Nearby tourist attractions

● Higashi Hongan-ji Temple (approx. 10 min. on foot) ● Nishi Hongan-ji Temple (approx. 15 min. on foot) ● Sanjusangen-do Temple (approx. 5 min. by bus)

● Kyoto National Museum (approx. 5 min. by bus) ● To-ji Temple (approx. 2 min. by train or 5 min. on foot)

# Hotel Keihan Kyoto Grande | Kyoto

With Toji and Higashi Honganji temples within walking distance, this is the perfect base for sightseeing in Kyoto. Getting to and from the airport is also easy from the bus stop in front of the hotel. The Superior Floor on the 13th floor boasts an exclusive lounge with views of Higashiyama and the city of Kyoto. 1 minute on foot from JR Kyoto Station Hachijoguchi Exit Underground walkway offers easy direct access even on rainy days



\*All photos are for illustrative purposes only.

## GUEST ROOM

This hotel offers a wide range of rooms suitable for any type of travel, including everything from single rooms perfect for business travelers to junior suite rooms with baths boasting a spectacular view.



Twin room example



Superior view bath junior suite room

### No. of guest rooms: 320 (Hotel capacity: 741 people)

- Single rooms (15 m<sup>2</sup>): 84
- Twin rooms (23 m<sup>2</sup>): 182
- Double rooms (19 m<sup>2</sup>): 23
- Family rooms (38 m<sup>2</sup>): 3
- Superior twin rooms (25 m<sup>2</sup>): 22
- Superior king double rooms with airweave (25 m<sup>2</sup>): 1
- Superior deluxe twin rooms (36 m<sup>2</sup>): 1
- Superior junior suite rooms (42 m<sup>2</sup>): 1
- Superior view bath junior suite rooms (50 m<sup>2</sup>): 1
- Garden view zen rooms (50 m<sup>2</sup>): 2

Check-in: 15:00 / Check-out: 11:00

## RESTAURANT



### Octavar Mediterranean Cuisine / Wine & Beer Bar (max. seating capacity: 150)

The restaurant offers a range of Mediterranean cuisine including freshly baked pizza and pasta from a stone oven, and a comprehensive drinks menu that includes everything from 9 varieties of rigorously selected draft beers, wines, whiskeys, and cocktails to alcohol-free beverages.

## BANQUET HALL



Korin (seated layout)



Korin (school layout)



Fuji



Octavar Party Room

The banquet halls can accommodate all needs for meetings, interviews, seminars, training, and other uses. The restaurant also boasts bright and spacious Mediterranean-themed private rooms.

### Facilities

Name of venue	Size (m <sup>2</sup> )	Room height (m)	Width (m)	Length (m)	Capacity (no. of people)					
					Banquet	Seated	Standing	School	Theater	Square seating arrangement
Korin	200	2.6	10.0	20.0	96	120	130	117	160	60
Fuji	40	2.2	8.0	5.0						16
Party Room	50				16	32	40			

## ACCESS MAP



- By train
  - Approx. 1 min. on foot from JR Kyoto Sta. Hachijoguchi Exit
- By plane
  - From Osaka International Airport: Approx. 55 min. (Airport Limousine Bus) → JR Kyoto Sta. Hachijoguchi Exit → Approx. 2 min. on foot
  - From Kansai International Airport: 1) Approx. 85 min. 2) Approx. 80 min. (Airport Limousine Bus) → JR Kyoto Sta. Hachijoguchi Exit → Approx. 1 min. on foot 2) (JR Kansai-Airport Express "Haruka") → JR Kyoto Station → Approx. 2 min. on foot
- By car
  - Approx. 15 min. from Kyoto-minami Interchange on the Meishin Expressway
  - Please park in the Kyoto municipal Hachijoguchi parking lot (fees apply) on basement levels 2 and 3 in the adjacent Avant building.
- Nearby tourist attractions
  - Kyoto Aquarium (approx. 10 min. by bus) ● Kyoto Tower (approx. 5 min. on foot) ● Higashi Hongan-ji Temple (approx. 15 min. on foot)
  - Nishi Hongan-ji Temple (approx. 20 min. on foot) ● To-ji Temple (approx. 10 min. on foot) ● Sanjusangen-do Temple (approx. 5 min. by bus)
  - Kyoto National Museum (approx. 5 min. by bus) ● Tofuku-ji Temple (approx. 15 min. on foot)

# Hotel Keihan Kyoto Hachijoguchi | Kyoto

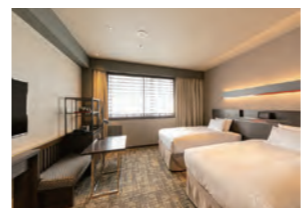
A convenient base for sightseeing in Kyoto. With a range of facilities including a large communal bath, a laundry area, mirroring function, and more, this hotel comes highly recommended for long stays. 5 min. on foot from JR Kyoto Station Hachijoguchi Exit 3 min. on foot from municipal subway Kujo Station



\*All photos are for illustrative purposes only.

## GUEST ROOM

Four types of rooms for offer quality and comfort.



Moderate twin room



Moderate triple room

### No. of guest rooms: 234 (Hotel capacity: 573 people)

- Single rooms (14 m<sup>2</sup>): 15
- Double rooms (17 m<sup>2</sup>): 9
- Twin rooms (17 m<sup>2</sup>): 88
- Triple rooms (21 m<sup>2</sup>): 19
- Moderate twin rooms (22 m<sup>2</sup>): 17
- Moderate triple rooms (22 m<sup>2</sup>): 86

Check-in: 15:00  
Check-out: 11:00

## RESTAURANT

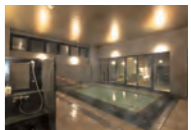
### Restaurant (max. seating capacity: 97)

In addition to fresh vegetables, on offer is a variety of carefully crafted vegetable dishes that combine fermented foods like vinegar and rice malt, along with a selection of colorful salad toppings. Creating your own open-faced sandwich by topping crispy toasted bread with fresh salad and your favorite ingredients comes highly recommended.

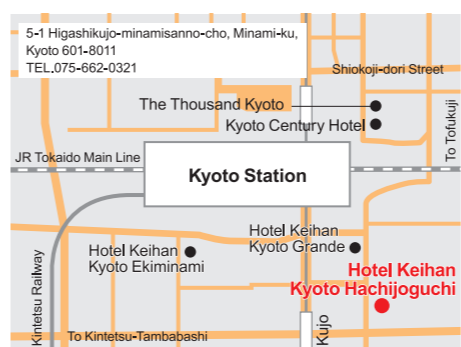


## HOTSPRING

Security with an electronic lock system that uses card-key offers peace of mind. Enjoy free ice candy after bathing.



## ACCESS MAP



- From Kyoto Station
  - 5 min. on foot from JR Kyoto Station Hachijo East Exit
  - 3 min. on foot from municipal subway Kujo Station Exit No. 1
- From airport
  - From Osaka International Airport: Approx. 60 min. (Airport Limousine Bus) → JR Kyoto Station → Approx. 5 min. on foot
  - From Kansai International Airport: 1) Approx. 95 min. 2) Approx. 85 min. (Airport Limousine Bus) → JR Kyoto Station → Approx. 5 min. on foot 2) Kansai International Airport → (JR Kansai-Airport Express "Haruka") → JR Kyoto Station → Approx. 5 min. on foot
- By car
  - Approx. 10 mins' drive from Kamitoba Interchange on the Hanshin Expressway
  - \*2,000 yen per guest per night, from 15:00 to 11:00 the next day (reservation required)
  - Parking lot for large buses (5 spaces)
- Nearby tourist attractions
  - Kyoto Aquarium (approx. 10 min. by bus) ● Kyoto Tower (approx. 10 min. on foot) ● Higashi Hongan-ji Temple (approx. 15 min. on foot)
  - Nishi Hongan-ji Temple (approx. 20 min. on foot) ● To-ji Temple (approx. 10 min. on foot) ● Sanjusangen-do Temple (approx. 5 min. by bus)
  - Kyoto National Museum (approx. 5 min. by bus) ● Tofuku-ji Temple (approx. 15 min. on foot)

# Hotel Keihan Kyoto Ekiminami | Kyoto

A specialized lodging hotel with cutting-edge functionality. Enjoy sightseeing in Kyoto free of baggage with the hotel's pre-check in and post-check out luggage storage service. Great location, 1 minute on foot from JR Kyoto Station Hachijoguchi Exit



\*All photos are for illustrative purposes only.

## GUEST ROOM

A comfortable space that is compact yet functional.



Twin room



Double room

### No. of guest rooms: 200 (Hotel capacity: 464 people)

- Single rooms (13 m<sup>2</sup>): 24
- Double rooms (17 m<sup>2</sup>): 23
- Moderate double rooms (22 m<sup>2</sup>): 8
- Twin rooms (16 + 20 m<sup>2</sup>): 49
- Triple rooms (20 m<sup>2</sup>): 88
- Moderate twin rooms (28 m<sup>2</sup>): 8

Check-in: 15:00  
Check-out: 11:00

## RESTAURANT

### Breakfast restaurant (max. seating capacity: 65)

Enjoy a customizable breakfast with sandwiches made to suit your preferences using your choice of bread and fillings, or French toast topped with your favorite sauces and creams.



## ACCESS MAP



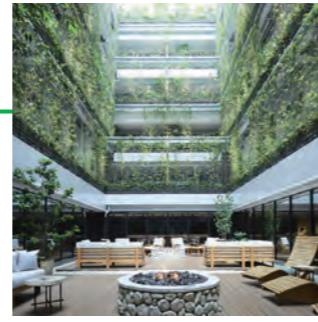
- By train
  - Approx. 1 min. on foot from JR Kyoto Sta. Hachijoguchi Exit
- By plane
  - From Osaka International Airport: Approx. 50 min. (Airport Limousine Bus) → JR Kyoto Sta. Hachijoguchi Exit → Approx. 1 min. on foot
  - From Kansai International Airport: 1) Approx. 90 min. 2) Approx. 70 min. (Airport Limousine Bus) → JR Kyoto Station → Approx. 5 min. on foot 2) (JR Kansai-Airport Express "Haruka") → JR Kyoto Station → Approx. 5 min. on foot
- By car
  - Approx. 10 min. from Kamitoba Interchange on the Hanshin Expressway
  - Please park in the Kyoto municipal Hachijoguchi parking lot (fees apply) on basement levels 2 and 3 in the Avant building.
- Nearby tourist attractions
  - Kyoto Aquarium (approx. 10 min. by bus) ● Kyoto Tower (approx. 5 min. on foot) ● Higashi Hongan-ji Temple (approx. 15 min. on foot)
  - Nishi Hongan-ji Temple (approx. 20 min. on foot) ● To-ji Temple (approx. 10 min. on foot) ● Sanjusangen-do Temple (approx. 5 min. by bus)
  - Kyoto National Museum (approx. 5 min. by bus) ● Tofuku-ji Temple (approx. 15 min. on foot)

# Good Nature Hotel Kyoto

(Good Nature Station 4~9F) | Kyoto

A lifestyle hotel that is kind to both people and the environment.

This is a cutting-edge sustainable hotel that was the first in the world to simultaneously acquire WELL certification (v1) for giving consideration to emotional and physical health, and LEED certification for giving consideration to the global environment. The hotel welcomes guests with natural wood-toned rooms, a courtyard where guests are surrounded with large walls of green, and other nature-filled spaces, and it also offers services including a breakfast with plenty of fresh vegetables and an abundance of wellness programs.



\*All photos are for illustrative purposes only.

## GUEST ROOM

Spacious guest rooms ranging from 28 to 90m<sup>2</sup> provide a comfortable stay for multiple guests. Guests can also enjoy special bath amenities and welcome sweets.



The Good Nature Suite



Superior twin room

■ No. of guest rooms: 141 (hotel capacity: 341 people)

- Superior twin rooms (28 - 35 m<sup>2</sup>): 75
- Deluxe twin rooms (35 - 48 m<sup>2</sup>): 8
- Deluxe corner rooms (42 - 49 m<sup>2</sup>): 10
- Garden view terrace twin rooms (33 - 36 m<sup>2</sup>): 20
- Deluxe terrace twin rooms (45 m<sup>2</sup>): 2
- Deluxe grand twin rooms (52 m<sup>2</sup>): 15
- Kawaramachi terrace suite rooms (53 m<sup>2</sup>): 5
- Higashiyama terrace suite rooms (68 m<sup>2</sup>): 5
- The Good Nature Suite (90 m<sup>2</sup>): 1

Check-in: 15:00 / Check-out: 11:00

## LOUNGE

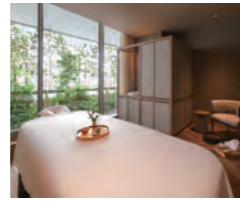
This lounge area is available for use by guests staying in specific types of guest rooms. In addition to light dishes and drinks, alcoholic beverages are also provided during cocktail time.



Lounge

## SPA

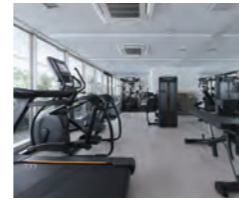
The spa offers guests a moment to take a deep breath alongside nature, starting with treatment courses using NEMOHAMO cosmetics.



Spa

## GYM

Keep building the fitness needed for a healthy daily life during your hotel stay.



Gym

## RESTAURANT

From all-day dining at ERUTAN RESTAURANT/BAR to Hyssop, which caters to vegan, vegetarian, and other such diets, and three Michelin Guide-listed restaurants among other establishments, the hotel offers a diverse range of dining options for guests to enjoy.



Hyssop (casual restaurant)



ERUTAN (restaurant/bar)



Velrosier (Chinese gastronomy)



Takayama (creative dining)

## Market and other attractions.

This hotel offers the kind of rich shopping experience you would expect of a hotel located in the GOOD NATURE STATION integrated commercial facility. MARKET, located on the 1st floor, also offers a takeout menu that lets customers enjoy hamburgers and fresh vegetables with a theme of fermentation.



Market Kitchen (fresh food, processed food, and wine)



RAU Patisserie & Chocolate (cafe)



NEMOHAMO (cosmetics)



KASOKEKI (crafts)

## ACCESS MAP



### By train

- From Kyoto Station: 1) Approx. 15 min. 2) Approx. 30 min.
- 1) (Kyoto Subway Karasuma Line) → Subway Shijo Station → Hankyu Kyoto-kawaramachi Station → Approx. 2 min. on foot
- 2) (JR Nara Line) → JR Tofukujji Station → Tofukujji Station → Gion-shijo Station → Approx. 5 min. on foot

### By plane

- From Osaka International Airport: Approx. 50 min.
- (Airport Limousine Bus) → JR Kyoto Sta. Hachijoguchi Exit → Subway Kyoto Station → Subway Shijo Station → Hankyu Kyoto-kawaramachi Station → Approx. 2 min. on foot
- From Kansai International Airport: 1) Approx. 85 min. 2) Approx. 75 min.
- 1) (Airport Limousine Bus) → JR Kyoto Sta. Hachijoguchi Exit → Subway Kyoto Station → Subway Shijo Station → Hankyu Kyoto-kawaramachi Station → Approx. 2 min. on foot
- 2) (JR Kansai-Airport Express "Haruka") → JR Kyoto Station → Subway Kyoto Station → Subway Shijo Station → Hankyu Kyoto-kawaramachi Station → Approx. 2 min. on foot

### By car

- Approx. 30 min. from Kyoto-minami Interchange or Kyoto-higashi Interchange on the Meishin Expressway
- GOOD NATURE STATION parking lot available for use. \*Opening hours: 6:30 - 23:30.

# Biwako Hotel

| Shiga

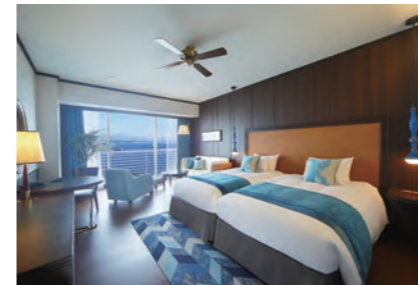
Approx. 15 min. from Kyoto by JR train. A resort hotel where the concept is "Resort & Relax" that has the magnificent Lake Biwa spreading out before your eyes.

All guest rooms have a lake view and are functional while also being refined and spacious. The hotel boasts ample facilities including restaurants and large natural hot spring baths.

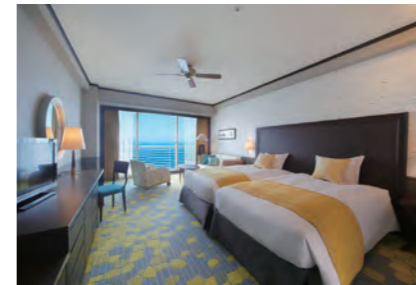


\*All photos are for illustrative purposes only.

## GUEST ROOM



Premier luxury floor Aqua



Deluxe floor Lumina

There are a total of 175 guest rooms, and all have lake views. Peace and quiet await you in this location blessed with the huge lake and abundant greenery. Enjoy the hotel's soothing, relaxing resort life to the full. Guests on the premier luxury floor can enjoy blissful hospitality in the club lounge.

■ No. of guest rooms: 175 (Hotel capacity: 565 people)

- Premier luxury floor Vista (Twin rooms: 43 m<sup>2</sup>): 4
- Premier luxury floor Aqua (Twin rooms: 40 m<sup>2</sup>, Double rooms: 30 m<sup>2</sup>, Junior suite room: 66 m<sup>2</sup>, Royal suite room: 100 m<sup>2</sup>): 41 (Inc. 1 royal suite & 1 junior suite)
- Superior floor Natura (Twin rooms: 40 m<sup>2</sup> or 33 m<sup>2</sup>, Double room: 30 m<sup>2</sup>): 42 (Inc. 1 double-bed room)
- Deluxe floor Lumina (Twin rooms: 40 m<sup>2</sup>, Double rooms: 30 m<sup>2</sup>): 88 (Inc. 8 double-bed rooms)

Check-in: 15:00 / Check-out: 11:00

\*For Premier luxury floor Aqua, check-in is 14:00 and check-out is 12:00

## RESTAURANT



Japanese Cuisine Ohmi (Max. seating capacity: 60)

Offering new Japanese cuisine with an original take on Japanese traditions. Private rooms are available for commemorations and gatherings. (Private rooms avail.)



Italian Dining Bel Lago (Max. seating capacity: 123, inc. 32 seats in cafe)

This restaurant affords superb views of Lake Biwa from its large windows. In addition to a buffet that lets you enjoy freshly prepared food, this restaurant offers plentiful a la carte and cafe-style menu options, making it a great choice for any situation from lunch through to bar time.

## BANQUET HALL



Ruri



Cruise Dining



Biwako



Nagara

Biwako Hotel has multipurpose reception halls which can cater to various needs, including a large reception hall which can accommodate up to 1000 people and a Japanese-style reception hall where guests can relax seated at tables.

### Facilities

Name of venue	Size (m <sup>2</sup> )	Room height (m)	Width (m)	Length (m)	Capacity (no. of people)								
					Banquet	Seated	Standing	School	Theater	Square seating (seating area)	Eating together		
Ruri	900m <sup>2</sup>	7.00	41.0	22.0	500	450	800	750	1,000				
Rose	300m <sup>2</sup>	2.80	17.5	17.5	120	120	200	180	280	80			
Cruise Dining	140m <sup>2</sup>	2.70	0.0	0.0	70	80	60	70	120	54			
White	70m <sup>2</sup>	2.70	8.0	9.5	40	30	40	32	65	32			
Green	70m <sup>2</sup>	2.70	8.0	9.5	40	30	40	32	65	32			
Cobalt	35m <sup>2</sup>	2.70	4.0	9.5	16	20			30				

Name of venue	Size (m <sup>2</sup> /No. of tatami)	Room height (m)	Width (m)	Length (m)	Capacity (no. of people)							
					Banquet	Seated	Standing	School	Theater	Square seating (seating area)	Eating together	
Biwako	126 tatami	2.95	16.2	11.2								120
Hagi	56 tatami	2.85	12.6	6.4								48
Nagara	30 tatami	2.25	5.4	9.0								32
Karasaki	24 tatami	2.55	5.4	7.2								24
Hira	17.5 tatami	2.55	4.5	6.3								10
SAZANAMI	114m <sup>2</sup>	3.30										49

## ACCESS MAP



### By train

- From JR Kyoto Station: Approx. 15 min.
- (JR Biwako Line) → JR Otsu Station → Approx. 5 min. by shuttle bus \* Free shuttle bus departs from JR Otsu Station at intervals of 20 min.

### By plane

- From Osaka International Airport: Approx. 75 min.
- (Airport Limousine Bus) → Alight at JR Kyoto Sta. Hachijoguchi bus stop → JR Kyoto Station → JR Otsu Station → Approx. 5 min. by shuttle bus
- From Kansai International Airport: 1) Approx. 105 min. 2) Approx. 95 min.
- 1) (Airport Limousine Bus) → Alight at Kyoto Sta. Hachijoguchi bus stop → JR Kyoto Station → JR Otsu Station → Approx. 5 min. by shuttle bus
- 2) (JR Kansai-Airport Express "Haruka") → JR Kyoto Station → JR Otsu Station → Approx. 5 min. by shuttle bus

### By car

- Approx. 5 min. from Otsu Interchange on the Meishin Expressway

- Hotel parking lot (Capacity: 155 spaces) / People who use the hotel may park for free for a set amount of time.  
 \* Overnight guests - Free 24 hr. / day. Reception hall guests: Free for 6 hr. Restaurant guests - Free for 4 hr.  
 \* First-come-first-served (Reservations not possible, height limit applies (2.3 m limit). If the hotel parking lot is full, we will let you know of other parking lots in the neighborhood. (Fees apply)

### Nearby tourist attractions

- Mi-dera Temple (Onjou-ji Temple) (Approx. 10 min. by car) ● Ishiyama-dera Temple (Approx. 15 min. by car) ● Heizan Enryaku-ji Temple (Approx. 40 min. by car)
- Biwako Hall (Approx. 5 min. by car) ● MIHO MUSEUM (Approx. 50 min. by car) ● Shiga Prefectural Lake Biwa Museum (Approx. 35 min. by car)

# Hotel Keihan Tokyo Yotsuya | Tokyo |

Direct from Shinjuku Station and Tokyo Station. Perfect as a base for business. Quiet location near the Akasaka Palace State Guest House.

3 minutes on foot from Yotsuya Station, reachable by JR Chuo Line, JR Sobu Line, Tokyo Metro Namboku Line, and the Marunouchi Line.



\*All photos are for illustrative purposes only.

## GUEST ROOM

Bright, functional rooms for up to three guests, with a color scheme anchored in white.



Semi-double room



Twin room

■ No. of guest rooms: 1210  
(Hotel capacity: 243 people)

- Single rooms (17 m<sup>2</sup>): 15
- Semi-double rooms (16 m<sup>2</sup>): 68
- Double rooms (20 m<sup>2</sup>): 6
- Twin rooms (21 m<sup>2</sup>): 14
- Compact Hollywood twin rooms (16 m<sup>2</sup>): 14
- Universal rooms (32 m<sup>2</sup>): 3

Check-in: 15:00 / Check-out: 11:00

## RESTAURANT

Restaurant Pizza Salvatore Cuomo Yotsuya (Max. seating capacity: 37)



The mixed Japanese and Western-style breakfast buffet offers seasonal vegetables that are oven-roasted to bring out their innate sweetness.

## ACCESS MAP



### By train

● From Tokyo Station: Approx. 15 min.  
(JR Chuo Line) → JR Yotsuya Station → approx. 3 min. on foot

### By plane

● From Haneda Airport: Approx. 45 min.  
(Tokyo Monorail) → Monorail Hamamatsuchō Station → JR Kanda Station → JR Yotsuya Station → approx. 3 min. on foot

● From Narita International Airport: Approx. 75 min.  
(Keisei Narita Sky Access Line) → Subway Asakusabashi Station → JR Yotsuya Station → approx. 3 min. on foot

### By car

● 5 min. from Gaien exit on Metropolitan Expressway Route No. 4 Shinjuku Line \*No exclusive parking at hotel.

### Nearby tourist attractions

- Tokyo Dome (approx. 15 min. by train + on foot)
- Tokyo Tower (approx. 30 min. by train + on foot)
- Nippon Budokan (approx. 20 min. by train + on foot)
- Tokyo Skytree (approx. 30 min. by train + on foot)

# Hotel Keihan Tsukiji Ginza Grande | Tokyo |

Conveniently located near Ginza Station, with the Tsukiji Outer Market just a short walk away. Can be used as a base for business and sightseeing, and also available are a guest-only gym, a laundry corner, and other convenient facilities for longer-term stays.

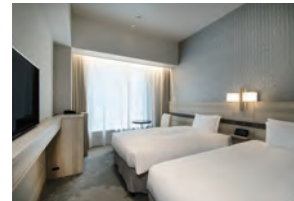
2 mins. on foot from Tsukiji Station on the Tokyo Metro Hibiya Line, and 3 mins. on foot from Shintomicho Station on the Tokyo Metro Yurakucho Line



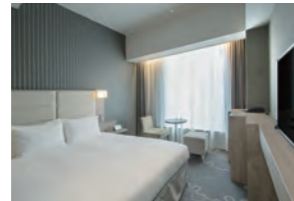
\*All photos are for illustrative purposes only.

## GUEST ROOM

A calm and relaxing interior with a harmonized blend of the traditional and the modern. Enjoy a stay offering even greater luxury on the Superior Floors located on floors 13 and 14.



Standard twin room



Double room

■ No. of guest rooms: 296  
(Hotel capacity: 745 people)

- Double rooms (16 m<sup>2</sup>): 12
- Double rooms (19 m<sup>2</sup>): 70
- Double rooms (22 m<sup>2</sup>): 10
- Casual twin rooms (21 m<sup>2</sup>): 18
- Corner twin rooms (25 m<sup>2</sup>): 10
- Standard twin rooms (23 m<sup>2</sup>): 100
- Comfort twin rooms (27 - 31 m<sup>2</sup>): 15
- Comfort corner twin rooms (34 m<sup>2</sup>): 10
- Superior floor double rooms (19 m<sup>2</sup>): 13
- Superior floor double rooms (22 m<sup>2</sup>): 2
- Superior floor standard twin rooms (23 m<sup>2</sup>): 20
- Superior floor comfort twin rooms (27 - 31 m<sup>2</sup>): 4
- Superior floor comfort view twin rooms (30 m<sup>2</sup>): 2
- Superior floor deluxe twin rooms (40 m<sup>2</sup>): 2
- Universal rooms (27 m<sup>2</sup>): 5
- Deluxe quad rooms (42 m<sup>2</sup>): 1

Check-in: 15:00 / Check-out: 11:00

## RESTAURANT

Restaurant Tomoru (Max. seating capacity: 137)



A relaxing space surrounded by large windows and with a view out over Tsukijigawa Park. Guests can enjoy a wholesome and satisfying buffet breakfast, as well as a casual lunch and dinner at this restaurant.

## ACCESS MAP



### By train

● From Tokyo Station: (1) (2) Approx. 15 min.

- 1) (Tokyo Metro Marunouchi Line) → Tokyo Metro Ginza Station → Tokyo Metro Tsukiji Station → approx. 2 min. on foot
- 2) (JR Yamanote Line) → JR Yurakucho Station / Tokyo Metro Yurakucho Station → Tokyo Metro Shintomicho Station → approx. 3 min. on foot

### By plane

● From Haneda Airport: 1) Approx. 40 min. 2) Approx. 45 min.  
(1) (Keikyu Airport Express) → Subway Higashi-Ginza Station → Tokyo Metro Higashi-Ginza Station → Tsukiji Station → approx. 2 min. on foot  
(2) (Tokyo Monorail) → Monorail Hamamatsuchō Station / JR Hamamatsuchō Station → JR Yurakucho Station / Tokyo Metro Yurakucho Station → Tokyo Metro Shintomicho Station → approx. 3 min. on foot

● From Narita International Airport: 1) Approx. 70 min. 2) Approx. 90 min.

- (1) (Skyliner) → Keisei Ueno / Tokyo Metro Ueno Station → Tsukiji Station → approx. 2 min. on foot
- (2) (Skyliner) → Keisei Nippori Station / JR Nippori Station → JR Yurakucho Station / Tokyo Metro Yurakucho Station → Shintomicho Station → approx. 3 min. on foot

### By car

● Approx. 5 min. from the Shintomicho exit of the Metropolitan Expressway C1 Inner Circular Route  
- Hotel parking lot / 1 night's parking - 2,000 yen. \*First-come-first-served (reservations not permitted) \*Vehicle size limit: height: 2.0 m, total width: 1.95 m, total length: 5.3 m  
\*The road in front of the hotel parking lot is restricted to vehicles weighing less than 3 t.

# Hotel Keihan Asakusa | Tokyo |

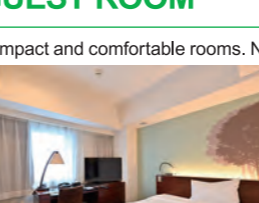
A good location allowing for strolls around Tokyo's downtown, Asakusa, with areas like Senso-ji Temple and Kaminarimon Gate that give off an air of Edo and easy access to the Tokyo Skytree®, which boasts a height of 634 meters. Ideal for business, as it is 20 minutes from Tokyo Station by train.



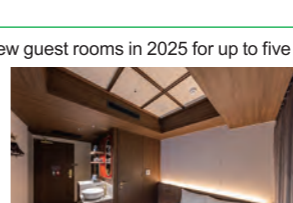
\*All photos are for illustrative purposes only.

## GUEST ROOM

Compact and comfortable rooms. New guest rooms in 2025 for up to five guests.



Single room



Semi-double room

■ No. of guest rooms: 150  
(Hotel capacity: 302 people)

- Single rooms (13 m<sup>2</sup>): 31
- Semi-double rooms (13 m<sup>2</sup>): 47
- Comfort double rooms (25 m<sup>2</sup>): 16
- Twin rooms (17 m<sup>2</sup>): 16
- Economy twin rooms (13 m<sup>2</sup>): 32
- Universal rooms (24 m<sup>2</sup>): 1
- Comfort twin rooms (26 m<sup>2</sup>): 1
- Superior twin rooms (31 m<sup>2</sup>): 2
- Superior triple rooms (40 m<sup>2</sup>): 4

Check-in: 15:00

Check-out: 11:00

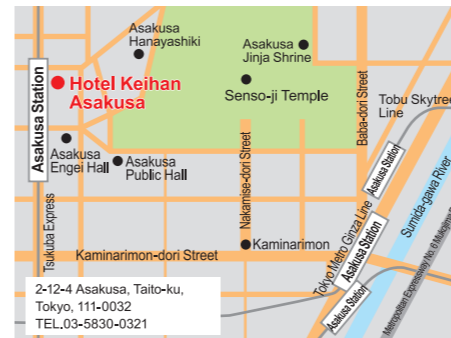
## RESTAURANT

Restaurant Piedmont (Max. seating capacity: 56)



With a theme of health and fermentation, this restaurant features a breakfast buffet offering thoughtfully crafted dishes like Asakusa rice balls hand-pressed on site and creative obanzai made with pickles from Kyoto's renowned Nishiri pickle shop.

## ACCESS MAP



### By train

● From Tokyo Station: Approx. 20 min.  
(JR Yamanote Line) → JR Akihabara Station → Tsukuba Express Asakusa Station → approx. 2 min. on foot

### By plane

● From Narita International Airport: Approx. 65 min.  
(Keisei Line (Rapid train) / Toei Asakusa Line (Rapid train) direct service) → Subway Asakusa Station → approx. 10 min. on foot

● From Haneda Airport: Approx. 50 min.

(Keikyu (Limited express) / Toei Asakusa Line (Limited express) direct service) → Asakusa Station → approx. 10 min. on foot

### By car

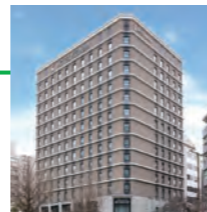
● Approx. 7 min. from the "Iriya" exit on the Metropolitan Expressway route no. 1  
● Approx. 7 min. from the "Komagata" exit on the Metropolitan Expressway route no. 6  
● Approx. 10 min. from the "Ueno" exit on the Metropolitan Expressway route no. 1

- Hotel parking lot (10 spaces avail.) / 2,000 yen/night. First-come-first-served (reservations not permitted), height restriction applies (1.55 m limit).

### Nearby tourist attractions

- Senso-ji temple (Approx. 5 min. on foot)
- Asakusa Public Hall (Approx. 5 min. on foot)
- Asakusa Hanayashiki (Approx. 2 min. on foot)
- Tokyo Skytree (Approx. 10 min. walk to the Toei Skytree Line Asakusa Station, approx. 3 min. by train)

# Hotel Keihan Nagoya | Aichi



Located in the heart of Nagoya, the Sakae/Nishiki area, it carries a refined metropolitan image.  
 Can be used not just for business, but also sightseeing and leisure.  
 Approx. 3 min. on foot from municipal subway Sakura-dori Line Marunouchi Station and Hisaya-odori Station.

\*All photos are for illustrative purposes only.

## GUEST ROOM



Twin room



Semi-double room

■ No. of guest rooms: 259  
 (Hotel capacity: 632 people)

- Double room (17.5 m<sup>2</sup>): 134
- Hollywood twin rooms (21 m<sup>2</sup>): 11
- Twin rooms (21 m<sup>2</sup>): 101
- Superior twin rooms (31 m<sup>2</sup>): 12
- Universal rooms (31 m<sup>2</sup>): 1

Check-in: 15:00  
 Check-out: 11:00

## RESTAURANT

Breakfast restaurant (Max. seating capacity: 88)



Enjoy a breakfast buffet featuring local Nagoya specialties such as Hitsumabushi-style rice, tebasaki chicken wings, and kishimen flat noodles. The restaurant has a cafe time, during which it can be used as a co-working space.

## ACCESS MAP



■ By train/plane

● From Chubu Centrair International Airport: 1) Approx. 35 min. 2) Approx. 60 min.

- 1) (Meitetsu Airport Line) → Meitetsu Nagoya Station / Subway Nagoya Station → Subway Marunouchi Station → Approx. 4 min. on foot
- 2) (Airport Limousine Bus) → Subway Sakae Station → Subway Hisaya-odori Station → Approx. 2 min. on foot

● From the Prefectural Nagoya Airport: Approx. 33 min.

- 2) (Airport bus) → Subway Sakae Station → Approx. 13 min. on foot

■ By car

● Approx. 5 min. from the Marunouchi exit of the Nagoya Urban Expressway Ring Route

# Hotel Keihan Sendai | Miyagi



Facing the rows of zelkova trees on Aoba-Dori Avenue that are the symbol of Sendai, this hotel is an ideal base for exploring Sendai.

As a base to visit areas around Tohoku, it comes highly recommended for business use.

8 mins. on foot from JR Sendai Station, and 2 mins. on foot from JR Aobadori Station

\*All photos are for illustrative purposes only.

## GUEST ROOM



Twin room



Semi-double room

■ No. of guest rooms: 201  
 (Hotel capacity: 474 people)

- Semi-double rooms (17.4 - 18.5 m<sup>2</sup>): 50
- Double rooms (17.5 - 18.5 m<sup>2</sup>): 53
- Twin rooms (24.3 - 26.3 m<sup>2</sup>): 97
- Universal rooms (29 m<sup>2</sup>): 1

Check-in: 15:00  
 Check-out: 11:00

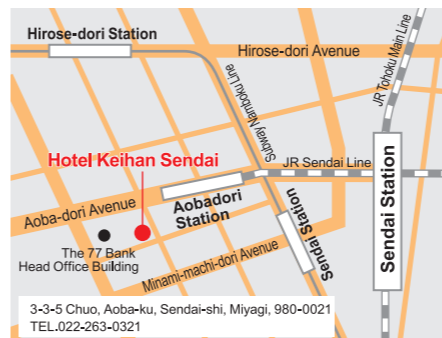
## RESTAURANT

Breakfast restaurant (Max. seating capacity: 93)



This restaurant offers a select breakfast buffet with unique local cuisine from Tohoku, such as fish cakes and Shiroishi Umen noodles. Enjoy a refreshing breakfast in a space filled with sunlight.

## ACCESS MAP



■ By train/plane

● From Sendai Airport: 1) Approx. 38 min. 2) Approx. 58 min.

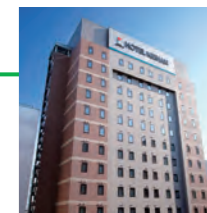
- 1) (Sendai Airport Access Line) → JR Sendai Station → Approx. 8 min. on foot
- 2) (Airport Limousine Bus) → JR Sendai Station → Approx. 8 min. on foot

\* Approx. 2 minutes on foot from JR Aobadori Station

■ By car

● Approx. 15 min. from Sendai-Miyagi Interchange on the Tohoku Expressway

# Hotel Keihan Sapporo | Hokkaido



A perfect base for sightseeing located near the main train station. Guests can enjoy an ice cream after a dip in the hotel's large guest-only communal bath.

Rooms include train view rooms from which guests can watch the trains below.

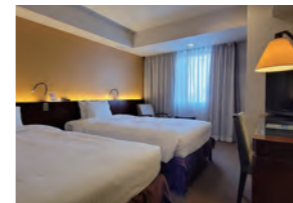
4 mins. on foot from Sapporo Station

\*All photos are for illustrative purposes only.

## GUEST ROOM



Single room



Twin room

■ No. of guest rooms: 200  
 (Hotel capacity: 418 people)

- Single/semi-double rooms (15 m<sup>2</sup>): 36
- Double rooms (16 m<sup>2</sup>): 28
- Compact twin rooms (16 m<sup>2</sup>): 62
- Superior double rooms (18 m<sup>2</sup>): 10
- Casual twin rooms (18 m<sup>2</sup>): 22
- Standard twin/triple rooms (22 m<sup>2</sup>): 26
- Superior twin/triple rooms (26 m<sup>2</sup>): 10
- Universal rooms (29 m<sup>2</sup>): 1
- Deluxe rooms (36 m<sup>2</sup>): 1
- Connecting rooms (suite of 2) (26 m<sup>2</sup> + 16 m<sup>2</sup>): 4

Check-in: 15:00  
 Check-out: 11:00

## RESTAURANT

Restaurant Piedmont (Max. seating capacity: 59)



The restaurant offers a breakfast buffet to delight customers that includes delicious Hokkaido-grown rice, roast fish, and dishes flavored with miso, sesame, or vinegar.

## ACCESS MAP



■ By train/plane

● From New Chitose Airport: Approx. 40 min.

(JR Rapid Airport) → JR Sapporo Station → Approx. 4 min. on foot

■ By car

● Approx. 10 min. from the "Sapporo Kita" exit on the Sapporo Expressway

- Hotel parking lot (20 spaces avail.) / 1 night's parking - 1,500 yen.  
 First-come-first-served (reservations not permitted), height limits apply (Regular vehicles: 1.55 m limit, High-roof vehicles: 2.00 m limit).  
 If the hotel parking lot is full, we will let you know of other parking lots in the neighborhood.

■ Nearby tourist attractions

- Hokkaido University (Approx. 5 min. on foot) ● Hokkaido Government Office (Approx. 5 min. on foot)
- Former Hokkaido Government Office Building (Approx. 5 min. on foot) ● JR Tower (T38) (Approx. 10 min. on foot)
- Sapporo Clock Tower (Approx. 15 min. on foot)



# Keihan Railway

We have created a railway network that extends over a total operating distance of 91.1 km and includes the Keihan Main Line, the Oto Line, the Nakanoshima Line, the Katano Line, the Uji Line, the Keishin Line, the Ishiyama-sakamoto Line, and the Kosaku Line. Many people use our railway network when commuting between the two major cities of Osaka and Kyoto for work and study, and to access Kyoto and Lake Biwa for sightseeing.



8000 series



3000 series



13000 series

## Premium Car



There is a special reserved-seat car connected to limited express and rapid express trains between Osaka and Kyoto, and there are 8000 series and 3000 series cars. The Premium Cars meet the needs of people who wish to ensure that they are able to sit down when travelling even if it means paying extra, and people who wish to travel in a relaxed manner in a high-quality space.

- ◎ Fees: Regular fare + 400 - 500 yen (depends on section travelled)
- ◎ Service: Dedicated attendant, free Wi-Fi, reclining seats, electrical outlets for all seats and tables for some seats, luggage spaces for large luggage, etc.

\* Some trains do not have attendants for some journey sections.

## Iwashimizu-hachimangu-sando-cable



This cable car forms the approach to the Iwashimizu-hachimangu Shrine. The cable car was redesigned in 2019, the beginning of the Reiwa era. The two cable cars, which form a pair, were modeled on the "Doves of Aun" of Iwashimizu-hachimangu Shrine, which are thought to be divine messengers. One car was designed as the "Sun messenger" (= "Akane"), and the other as the "Moon messenger" (= "Kogane").

- ◎ Required time: Approx. 3 mins (One-way)

## Attractions along the train line

### Osaka area



The Osaka area is full of enjoyable places. To start with, there is Osaka Castle, which sits in lush surroundings and is noted in connection with *Taiko* Toyotomi Hideyoshi. Other attractions include Osaka Aquarium Kaiyukan, one of the world's largest aquariums, with its popular huge whale shark, and the Universal Studios Japan theme park, full of the world's best wonder and thrills.

### Gion / Higashiyama area



Gion and Higashiyama stand out among Kyoto's popular areas. There, you can visit Yasaka-jinja Shrine and Kiyomizu-dera Temple, and also experience townscapes typical of Kyoto, such as Sanneizaka and Nineizaka.

### Hirakata area



The Hirakata area has various tourist spots, including Hirakata Park, which everyone from small children to adults can enjoy all year round, with its pool in summer, illumination from fall to spring, and skating in winter. As well, there is the "Hoshi no Buranko", one of the largest suspension bridges in Japan, where you can enjoy magnificent views of the colored leaves in fall.

### Lake Biwa area



Shiga Prefecture has Lake Biwa, Japan's largest and oldest lake, and has flourished as a strategic land and water transportation position since old times. It has many historic shrines and temples, such as Hiyoishi Taisha Shrine, Mii-dera Temple, and Ishiyama-dera Temple, and also boasts plenty of tourist facilities for your enjoyment, such as Biwako Cruise.

### Fushimi / Uji area

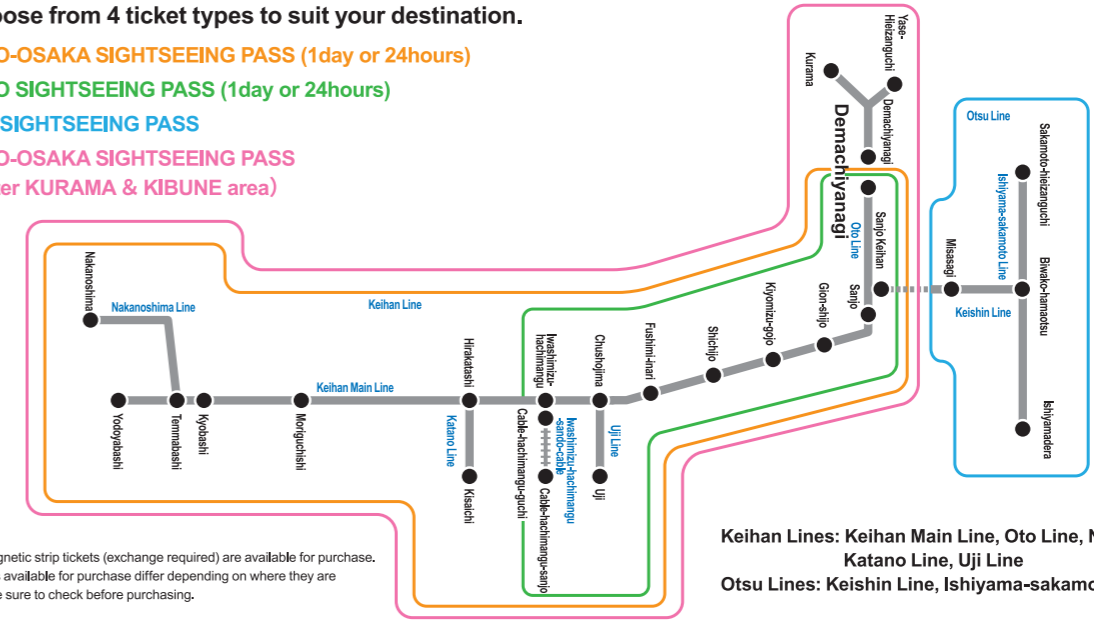


Fushimi, Kyoto, which has been a great sake producer since old times. As well as sake breweries, famous sightseeing places such as Fushimi-inari-taisha Shrine and national treasure Iwashimizu-hachimangu Shrines dot the area. In Uji, a place of Heian Period culture and tea, you can enjoy visiting the World Heritage sites Byodoin Temple and Uji-gami-jinja Shrine, as well as tea-related establishments.

## Bargain passenger tickets

You can choose from 4 ticket types to suit your destination.

- KYOTO-OSAKA SIGHTSEEING PASS (1day or 24hours)
- KYOTO SIGHTSEEING PASS (1day or 24hours)
- OTSU SIGHTSEEING PASS
- KYOTO-OSAKA SIGHTSEEING PASS (Greater KURAMA & KIBUNE area)



\*Digital tickets and magnetic strip tickets (exchange required) are available for purchase. The passenger tickets available for purchase differ depending on where they are purchased from, so be sure to check before purchasing.

### ◎ KYOTO-OSAKA SIGHTSEEING PASS (1day or 24hours)

A one-day ticket for unlimited rides on all Keihan Lines and the Iwashimizu-hachimangu-sando-cable. Convenient for popping out for day-trips between Osaka and Kyoto.

- Sales period: Digital: year-round; Any one day within three months from purchase date
- Valid for use: One-day ticket: 1,650 yen; 24-hour ticket: 1,850 yen
- Price: 800 yen
- Valid area: All Keihan Lines and the Iwashimizu-hachimangu-sando-cable [Unlimited stops permitted] \*Excluding Otsu Lines

### ◎ KYOTO SIGHTSEEING PASS (1day or 24hours)

A one-day ticket for unlimited rides in the Keihan Railway Kyoto area (Iwashimizu-hachimangu Station - Demachiyana Station / Uji Line / Iwashimizu-hachimangu-sando-cable). This is a very cheap, convenient ticket for Kyoto sightseeing.

- Sales period: Digital: year-round; Any one day within three months from purchase date
- Valid for use: One-day ticket: 1,100 yen, 24-hour ticket: 1,300 yen
- Price: 2,100 yen
- Valid area: Iwashimizu-hachimangu Station - Demachiyana Station, Uji Line, Iwashimizu-hachimangu-sando-cable [Unlimited stops permitted] \*Excluding Otsu Lines

### ◎ OTSU SIGHTSEEING PASS

A one-day ticket for unlimited rides on all Otsu Lines (Keishin Line, Ishiyama-sakamoto Line). Use this ticket to explore the famous places and historic ruins of Lake Biwa and Otsu to your heart's content.

- Sales period: April 1, 2026 to March 31, 2027
- Exchange period: Any one day within 3 months of purchase during the validity period.
- Valid for use: April 1, 2026 to April 30, 2027
- Price: 800 yen
- Valid area: All Keihan Railway Otsu Lines [Unlimited stops permitted] (Misasagi Station - Biwako-hamaotsu Station, Ishiyamadera Station - Sakamoto-hiezanguchi Station) \* Not valid for travel on the Kyoto City Subway. \* Digital tickets not available

### ◎ KYOTO-OSAKA SIGHTSEEING PASS (Greater KURAMA & KIBUNE area)

From Osaka to Kyoto, Kurama, Kibune, Yase. A one-day ticket for unlimited rides on the Keihan Railway and Eizan Railway.

- Sales period: Digital: April 1, 2026 to March 31, 2027
- Valid for use: Digital: April 1, 2026 to April 30, 2027; Any one day within three months from purchase date as long as it remains valid
- Price: 2,100 yen
- Valid area: Keihan Railway: All Keihan Lines and the Iwashimizu-hachimangu-sando-cable [Unlimited stops permitted] \*Excluding Otsu Lines; Eizan Railway: All lines [Unlimited stops permitted] \* Refer to page 25 for the Eizan Railway route map.

\* Separate fees apply for use of the Keihan Railway Premium Car and Liner. \* Each ticket is valid for only one person. \* Product details, places of sale, and so on may change.

• Detailed ticket information is here

<https://www.keihan.co.jp/travel/en/trains/passes-for-visitors-to-japan/>



QR Translator

- English
- 繁體中文
- 简体中文
- 한국어

## Chartered train

Travel sections (3 or more sections one way) fare × 100 people (quota) × No. of cars  
\* Example of charter fee calculation  
-<If chartering a 4-car train for a one-way trip between Demachiyana Station and Uji Station>  
460 yen (travel section fare) × 100 people (quota) × 4 cars = Total fee of 184,000 yen

Otsu Line charter train fee calculation 3-section fare × Car passenger quota  
- 800 series  
380 yen × 386 people (quota) = 146,680 yen  
Travel sections are limited to between Shinomiya Station and Biwako-hamaotsu Station  
- 600 type, 700 type car  
380 yen × 190 people (quota) = 72,200 yen  
Travel section: Ishiyamadera Station - Sakamoto-hiezanguchi Station  
Shinomiya Station - Biwako-hamaotsu Station

\*In addition to the above, expenses related to operating a chartered train will be applied.

## Group discount

No. of passengers	No. of passengers free of charge	School group		Regular group
		Junior high school	Other	
25 to 99	1	30% discount	20% discount	10% discount
100 to 149	2	40% discount	30% discount	20% discount
150 to 199	3			
200 to 249	4			
250 to 299	5	50% discount	40% discount	30% discount
300 to 349	6			
Every 50 passengers thereafter	+1			

# Eizan Railway

With the entrance to northern Kyoto City, Demachiyana, as a starting point, Eizan Railway operates the panorama train "Kirara" to Kurama and Kibune and the sightseeing train "Hiei" to Yase located at the foot of Mt. Hiei.



Sightseeing train "Hiei"



Panorama train Kirara



The new panoramic train "Mai"

## Bargain passenger tickets

### A one-day ticket for unlimited rides on the Eizan Railway

#### ◎ Eizan Railway one-day train ticket "Ee-kippu"

[Eizan Railway] Unlimited rides on all lines  
Price: Adult - 1,200 yen, Child - 600 yen  
Available for purchase at: Demachiyana Station, Shugakuin Station, Kurama Station (9:40 to 16:30)

### Bargain passenger tickets to Kurama and Kibune

#### ◎ Subway & Eiden (Eizan Railway) Kurama & Kibune day ticket

[Keihan Railway] Unlimited rides between Sanjo and Demachiyana  
[Eizan Railway] Unlimited rides on all lines  
[Subway] Unlimited rides on all lines  
Price: Adult - 2,100 yen  
Available for purchase at: Demachiyana Station, Kyoto Municipal Transportation Bureau's Kyoto City Bus & Subway Information Centers, commuter pass sales locations, Kyoto Tourist Information Center ("Kyo Nabi")

#### ◎ Northern Kyoto City / Woods and Water Ticket

[Eizan Railway] Unlimited rides on all lines  
[Kyoto Bus] Unlimited rides northward from Imadegawa (Excluding north of Kurama Onsen and Kodeishi, and Ginkakuji-michi (Ginkakuji Temple) - Hiei Sancho)  
Price: 1,800 yen  
Available for purchase at: Demachiyana Station, Shugakuin Station, Kurama Station (9:40 to 16:30)

### Bargain passenger tickets to Mt. Hiei

#### ◎ Mt. Hiei day ticket

[Eizan Railway] Unlimited rides for one day between Demachiyana and Yase-Hieizanguchi  
[Eizan Cable Car, Ropeway] Unlimited rides for one day  
[Kojak Kotsu Bus / Keihan Bus / Kyoto Bus] Unlimited rides for one day on shuttle bus within Mt. Hiei  
[Hieizan Enryaku-ji Temple] To-do / Sai-to / Yokawa pilgrimage  
Price: Adult - 3,100 yen, Child - 1,600 yen  
On sale from: March 20 to December 6, 2026

#### ◎ Hieizan all access pass

[Eizan Railway] Unlimited rides for one day between Demachiyana and Yase-Hieizanguchi  
[Eizan Cable Car, Ropeway] Unlimited rides for one day  
[Kojak Kotsu Bus / Keihan Bus / Kyoto Bus] Unlimited rides for one day on shuttle bus within Mt. Hiei  
[Sakamoto Cable Car] Unlimited rides for one day between Cable Enryakuji and Cable Sakamoto  
[Kojak Kotsu Bus] Unlimited rides for one day between Cable Sakamoto and Hieizan Sakamoto  
[Hieizan Enryaku-ji Temple] To-do / Sai-to / Yokawa pilgrimage  
Price: Adult - 3,500 yen, Child - 1,800 yen  
On sale from: March 20 to December 6, 2026

## Group rides / Chartered train

### ◎ Group prices

	25 to 99 people	100 to 299 people	300 or more people
Regular group	10% discount	20% discount	20% discount
School group	20% discount	30% discount	30% discount

\* School group discounts are limited to school groups led by a staff member/s of the school or the like. Groups composed of only preschool pupils, children, or students are regarded as regular groups.  
\* Depending on the number of people in a group, a certain number of group members will be free of charge, as per below:  
Groups of 25 to 49: 1 member, Groups of 50 to 99: 2 members, Groups of 100 to 149: 3 members, Groups of 150 to 199: 4 members

### ◎ An Eizan Railway train can be chartered and used for various social gatherings. The schedule will be decided after consulting with you regarding your wishes

[Examples of past charters]  
- Banquets, farewell and welcome parties (please arrange your own food and beverages)  
- Recitals  
- Movie/drama etc. shoots

### ◎ Charter fees are calculated as follows: Travel section adult regular fare total × Car passenger quota + Car holding fee, etc.

[Example of charter fee calculation]  
If chartering a 1-car train for one round trip between Demachiyana Station and Yase-Hieizanguchi Station  
(Adult one-way regular fare 280 yen × 2) × Car passenger quota 87 = 48,720 yen

\* Please see the official website regarding matters to be noted.

### ◎ Charter trains operate as 700 series (1-car train) or 800 series (2-car train) trains.

#### [700 series car]



Car passenger quota: 87 (includes a seated passenger quota of 37)

#### [800 series car]



Car passenger quota: 216 (includes a seated passenger quota of 88 to 90)

Bookings & inquiries Bookings are accepted between 3 months and 2 weeks prior to the charter date. Transportation Section of the Railway Division (staff member responsible for transportation) TEL 075-781-5121 (9:00 to 17:00)

## Guide to routes



### 1 Kurama-dera Temple

Many people visit Kurama-dera Temple to recharge, healing themselves spiritually and physically in the refreshing air. Kurama-dera Temple is famous as the temple in the legend of the tengu (mountain spirit) and Ushiwakamaru (Minamoto no Yoshitsune) and is noted in connection with the poet Yosano Akiko as well.



■ Access Alight at Kurama Station. Approx. 3 min. walk to the Deva temple gate, and 30 min. walk or 2 min. by cable car and 10 min. walk to main building.

### 2 Kifune-jinja Shrine

The god of water which the Kifune-jinja Shrine worships is held in deep reverence. This shrine is also known as the origin of ema, votive wooden tablets presented in prayer. In summer there is a water festival and the Tanabata festival, and in fall people enjoy watching the beautiful colored leaves and dreamy illumination displays.



■ Access Alight at Kibuneguchi Station, change to a Kyoto Bus and ride for 5 min. to the shrine (Approx. 30 min. on foot)

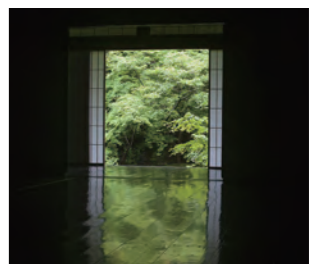
### 3 Momiji Tunnel

Many maple trees ("momiji") line both sides of the railway for about 250 meters between Ichihara Station and Ninose Station, and this is called the "Momiji Tunnel". Very beautiful fall colors can be enjoyed from the train windows.



### 4 Jissoin Monzeki Temple

This Monzeki temple (temple with connections to the Imperial Family) was formerly a temple of the Jimon school of the Tendai sect of Buddhism. In the temple are two gardens and a painting on a fusuma by the Kano school. The temple houses many treasures connected with the Imperial Family. You can appreciate the temple's lovely rock gardens and cherry blossoms in the spring, beautiful dappled greenery reflected on the floorboards from the start of summer, and pretty colored leaves reflected on the floorboards in fall.



■ Access Alight at Iwakura Station and walk about 20 min. to the temple, or alight at Hachiman-mae Station and change to a Kyoto Bus for the temple.

### 5 World Heritage site Hieizan Enryaku-ji Temple

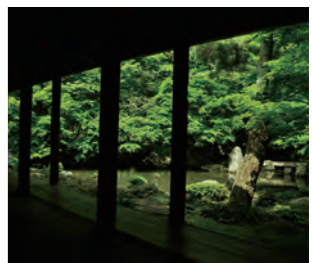
The head temple of the Tendai sect of Buddhism, founded by Dengyodaishi (Saicho). Many well-known monks in the history of Buddhism in Japan trained at Mt. Hiei in their young days, so this temple is also considered as the birthplace of Japanese Buddhism.



■ Access Alight at Yase-Hieizanguchi Station, take cable car and ropeway to Hieisancho (Mt. Hiei Summit), and go to Enryaku-ji Temple's areas by shuttle bus.

### 6 Renge-ji Temple

Kimyoan Renge-ji Temple, built by the Ohara highway. It has stone lanterns called "rengajiki" with hexagonal steeply inclined lantern shades. View the garden with its pond and arrangement of stones shaped like a crane and turtle, said by some to have been created by Ishikawa Jozan. Enjoy the new greenery of the maples at the start of summer and the colorful foliage in fall.



■ Access Alight at Miyakehachiman Station and walk about 10 min. to the temple.

### 7 Rurikoin Temple

Several hundred maple trees all around the temple grounds take on fall colors. The bright fall foliage and stunning view the Ruri garden offers are as pretty as a picture postcard.



■ Access Alight at the Eiden Yase-Hieizanguchi Station 5 min. on foot southward.

### 8 Shisendo Temple

The temple has a great poets room which displays portraits of 36 great Chinese poets, painted by Kano Tan'yu, and thus the temple came to be called Shisendo ("hall of great poets"). The Chinese-style garden is an exemplary fine garden, charming even on rainy days, adding to the temple's great popularity.



■ Access Alight at Ichijoji Station and walk 15 min. to the temple.

# Randen (Keifuku Electric Railroad)

The Randen Lines connect directly to famous sightseeing spots of western Kyoto. Western Kyoto is dotted with temples which are World Cultural Heritage Sites. The Arashiyama Main Line connects Shijo-Omiya in the east with Arashiyama in the west in 24 minutes. The Kitano Line's stations are named after famous shrines and temples.



New KYOTRAM Mobo Type 1 Carriage



Sakura (cherry blossom) Tunnel (between Narutaki Station and Utano Station)



Kimono Forest (In Arashiyama Station premises)

## Bargain passenger tickets

If your destination is Toei Kyoto Studio Park

### ◎ Ticket combining Randen and Toei Kyoto Studio Park

This ticket allows entry into the Toei Kyoto Studio Park and unlimited travel for one day on the Randen lines.

Price: Adult - 3,200 yen, Child - 1,770 yen  
Sold at these stations: Shijo-Omiya, Katabiranotsuji, Arashiyama, Kitano-Hakubaicho.

Perfect for sightseeing in Kyoto City

### ◎ Kyoto subway/Randen one-day ticket

This ticket allows unlimited travel for one day on the Randen tramlines (Arashiyama Main Line, Kitano Line) and the Kyoto City Subway (Karasuma Line, Tozai Line). This allows you to move smoothly in all directions in Kyoto, making this ticket ideal for sightseeing within Kyoto City.

Price: 1,300 yen (Adult ticket only)  
Sold at these stations: Shijo-Omiya, Katabiranotsuji, Arashiyama, Kitano-Hakubaicho.

Convenient for Kyoto sights, such as Tenryu-ji Temple and Ninna-ji Temple

### ◎ Randen 1-day Pass

A one-day ticket for unlimited rides on Randen Lines (Arashiyama Main Line, Kitano Line). Perfect for exploring temples and shrines along Randen Lines.

Price: Adult - 700 yen, Child - 350 yen  
Sold at these stations: Shijo-Omiya, Katabiranotsuji, Arashiyama, Kitano-Hakubaicho.

## Fares

### ◎ Regular fares (One-way) \* Flat fare wherever you travel

Adult	250 yen
Child	120 yen

### ◎ Group discount

25 to 99 people	10% discount
100 to 299 people	20% discount
Groups 300+	30% discount

## Group travel products [Randen Charter Tram]

Name: [Randen Charter Tram (1 car)]

Valid travel sections: 1) Start at Shijo-Omiya → Arrive at Arashiyama  
2) Start at Arashiyama → Arrive at Shijo-Omiya)

\* Charter fee for one tram: 25,000 yen  
(1 charter tram, max. seating capacity 35, max. capacity 90)

\* Travel fare: 130 yen (one way) × No. of people  
\* 30 min. free stabling at Arashiyama Station



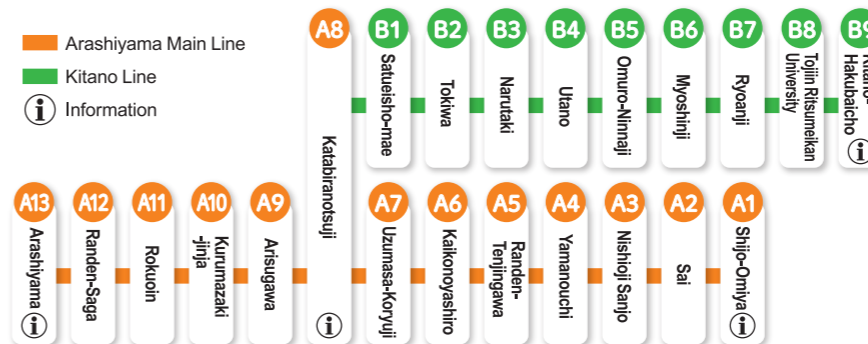
Charter is possible: All year \* Consultation is required if you wish to charter during Apr./Nov./Dec.

Product details: One Randen charter tram

Other options: Premium train (\* Separate fee required)

Seats and advertisements in the tram will be changed to suit the specifications of the charterer

## Guide to routes



Randen is the nickname of the Keifuku trams.

The Arashiyama Line started service in 1910 as the "Arashiyama Densha Kido" (Arashiyama Electric Tram Railway), and people affectionately called it "Randen". Since starting, Randen trams have been a part of the history of Kyoto, and they are now the only trams left in Kyoto.

## Arashiyama Main Line

A route which connects Shijo-Omiya with Kyoto's popular sightseeing area "Arashiyama". Trams run on Kyoto's only tramline, along which are many scenic and historic places spanning ancient times to recent years.

### Arashiyama / Sagano

This area boasts Togetsukyo bridge and the Bamboo Forest of Sagano, as well as many famous temples. Its abundant nature in each season is also an attraction. Many tourists from all over Japan and overseas visit this area.



A13 Right next to Arashiyama Station

### Tenryu-ji Temple

The temple was founded by Ashikaga Takauji to pray for the repose of Emperor Go-Daigo's soul. It has many places worth seeing, including the Sogenchi Pond Garden, a designated special historical and scenic spot, that was created by Muso Soseki, the first chief priest of the temple.



A13 Right next to Arashiyama Station

### Kurumazaki-jinja Shrine

This shrine is dedicated to Kiyohara no Yorinari, a Confucian scholar from the late Heian period. The popular spiritual hot spot "kiyome no yashiro" (purification shrine) and the entertainment shrine in the grounds are also visited by many entertainers.



A10 Right next to Kurumazaki-jinja Station

### Rokuin Temple

Kakuyuzan Hodo-ji Temple was established by Ashikaga Yoshimitsu to pray for the prolongation of his life. It is said that Rokuin was given its name (literally "deer ruler temple") because a group of wild deer appeared when it was built as the Hodo-ji temple founder's resting place. Hodo-ji Temple was destroyed by fire in the Onin War, but Rokuin was restored and shows its ancient form even today. The beauty of its maples also draws many visitors.



A11 About 4 min. on foot from Rokuin Station

### Uzumasa Kyoto Village

A movie theme park in the area of Uzumasa, the birthplace of Japanese movies. Tour period drama films, and experience the world of period dramas through outdoor sets, events, and park attractions! The ninja shows and character shows are also popular.



A7 About 5 min. on foot from Uzumasa-Koryuji Station

B1 About 2 min. on foot from Satsueisho-mae Station (Satsueisho-guchi)

### Nijo-jo Castle

Nijo-jo Castle is a flatland castle that was built as a base of the Tokugawa shogunate. Since then major repairs have been carried out on it. It has important cultural assets, including national treasure Ninomaru Palace, "Otemon" main gate and "sumi yagura" turrets, and Honmaru Palace. The garden of Ninomaru is a national designated special scenic spot.



A1 On foot or by bus from Shijo-Omiya Station

A5 From Randen-Tenjigawa Station, take the Subway Tozai Line to Nijo-mae and alight

## Kitano Line

Old temples which are World Cultural Heritage Sites are dotted along the line, as well as ancient and famous temples from the Heian dynasty to the Muromachi period. Change to the Arashiyama Main Line at Katabiranotsuji.

### Ninna-ji Temple

Ninna-ji Temple is a Monzeki temple whose construction was ordered by Emperor Koko and saw completion under Emperor Uda. It is also known as "Kyu-Omuro-Goshou". The temple is famous for its grounds with their many high-fights, its delicate, beautiful main building, and its late-blooming cherry blossoms, "omuro-zakura".



B5 About 3 min. on foot from Omuro-Ninnaji Station

### Myoshin-ji Temple

The temple was established when Emperor Hanazono donated his own imperial villa to found a Zen temple and made Kanzan Egan the founding monk. There are forty-six minor temples in the huge grounds. On the ceiling of the lecture hall is a picture of cloud and dragon done by Kano Tan'yu.



B6 About 3 min. on foot from Myoshinji Station

### Ryoan-ji Temple

Hosokawa Katsumoto founded Ryoan-ji Temple. The temple's rock garden, which is formed by fifteen stones and white sand, is very famous. The Stone Water-Basin, said to be Mito Mitsukuni's contribution, and the fall foliage of Kyoyo-chi Pond are also popular.



B7 About 7 min. on foot from Ryoanji Station

### Toji-in Temple

Ashikaga Takauji founded this temple. The temple was the Ashikaga dynasty's funeral temple, and many shoguns are buried there. The temple has two gardens in which lay two ponds, "fuyo-chi" and "shinj-ke", said to have been created by Muso Soseki. Between these gardens lies Hokyoin pagoda, the tomb of Ashikaga Takauji.



B8 About 5 min. on foot from Tojin Ritsumeikan University Station

### Kitano Temmangu Shrine

This is the head shrine of all Japanese Temmangu Shrines which worship the god of scholarship, Sugawara no Michizane. It is known as one of the leading picturesque places in Kyoto. In spring the ume (Japanese apricot) garden is opened to the public and in fall it is the turn of the maple garden. On the 25th of every month there is a fair, and many visitors flock to the shrine.



B9 About 5 min. on foot from Kitano-Hakubaicho Station

### Kinkaku-ji Temple (Rokuon-ji)

This temple is a branch temple of Shokoku-ji Temple. The golden pavilion of the reliquary hall is famous, so the temple is called Kinkaku-ji (Temple of the Golden Pavilion). After Ashikaga Yoshimitsu's death, the building was transformed from a villa into the temple, with Muso Kokushi as the founder.



B9 About 15 min. on foot from Kitano-Hakubaicho Station

# OKOSHI Bus (Kyoto Sightseeing Bus)

Kyoto's sightseeing spots are spread out over a wide area, so if you are not used to finding your way around it can be a quite a struggle.

If you want to move around efficiently within a limited time, the OKOSHI Bus is convenient. Starting with a classic sightseeing course that takes in the popular sightseeing spots, the Sightseeing Buses offer a varied selection of courses, including limited period courses suited to the seasons and events. The Buses depart from Kyoto Station. Solo travelers can join the Bus tours too, and it is possible to join tours without booking in advance. The set price includes the bus fare, entrance fees to tourist attractions, a meal, and so on, so you can sightsee efficiently.



◎ OKOSHI Bus offers delightful charm and good value for money  
Solo travelers can also join, and it is possible to join tours without booking in advance! However, those who book are given priority.

**Bargain prices!**

The set price includes the bus fare, entrance fees, a meal (on courses which include a meal), and so on.

**Easy and relaxing!**

You can enjoy the scenery from the window while the bus moves between sightseeing spots.

**Fun!**

We're preparing special experiences, such as visit the temples that do not normally open to the public and Maiko Dance.

## Regular Kyoto sightseeing course

As of February 2026

See the regular places of interest (AW)  
Kyoto's three main attractions - Kinkaku-ji Temple, Ginkaku-ji Temple, and Kiyomizu-dera Temple

Price	Adult: 6,900 yen Child: 3,450 yen
Starting point	JR Kyoto Station, Karasuma Exit
Departure time	10:00
Required time	Approx. 5 hr.

\* Enjoy choosing and eating your own lunch in the Kiyomizu-dera Temple area.

- Kinkaku-ji Temple
- Ginkaku-ji Temple
- Kiyomizu-dera Temple



Kiyomizu-dera Temple

Kyoto One Day (BF)  
Tenryu-ji Temple, Arashiyama Bamboo Grove, Kinkaku-ji Temple, Fushimi-inari-taisha Shrine

Price	Adult: 6,900 yen Child: 3,530 yen
Starting point	JR Kyoto Station, Karasuma Exit
Departure time	9:50
Required time	Approx. 6.5 hr.

- Tenryu-ji Temple / Bamboo forest and Arashiyama stroll
- Kinkaku-ji Temple
- Fushimi-inari-taisha Shrine



Fushimi-inari-taisha Shrine

Arashiyama One-day in-depth (SW)  
Sightseeing train and going down the Hozugawa River

When there are many customers, the 9:30 am departure course may also operate.

Price	Adult: 13,000 yen Child: 8,100 yen
Starting point	JR Kyoto Station, Karasuma Exit
Departure time	9:00
Required time	Approx. 7 hr.

- Sightseeing train
- Going down the Hozugawa River

The course does not run when the sightseeing train is not operating.  
In the case that the Hozugawa River attraction has been cancelled at the time of the bus course departure, due to the river rising or the like, the Hozugawa River attraction will not be included in the course. In this case, some course details will be changed.  
Arashiyama stroll: Stroll as you like for approx. 120 min.  
\* Enjoy choosing and eating your own lunch at Arashiyama.  
★ Arashiyama stroll coupon will be given



Sagano Romantic Train

An evening with a maiko (apprentice geisha) (GW)  
Takagamine Shozan Garden, night view lookout

Price	Adult: 11,300 yen Child: 9,650 yen
Starting point	JR Kyoto Station, Karasuma Exit
Departure time	17:30   17:40 (April only)
Required time	Approx. 3.5 hr.

- Shozan Resort Garden, kaiseki-style Kyoto cuisine, the traditional dance of a maiko
- Night view lookout <Higashiyama summit>

At the meal, enjoy watching the traditional Kyoto dance of a maiko (apprentice geisha), and take a photo to remember the occasion. Receive a volve slip as a present from the maiko.  
The "Night view lookout" may be changed to a Kyoto city drive depending on weather conditions, traffic conditions, etc.



Maiko

## Where to board the bus

JR Kyoto Station ● Karasuma Exit



Until January 2027



\* For details on days of operation and so on, please check the Keihan Bus website.

From February 2027



\* Our website will be redesigned from July 2026. From February 2027 onwards, please use the QR code on the left and click on "Okoshi Bus (Kyoto Sightseeing Bus)" for more information.

# SKY BUS KYOTO

Kyoto view from the top

Operating company: Myojo Bus Co.



\* The photo is for illustrative purposes only.

Multi-language audio guide highlights to you!!



## SKY BUS KYOTO preview

At SKY BUS KYOTO, we plan to operate courses that suit the seasons and events! As soon as we decide on something, we will notify you on our website, etc.

Limited-time-only drive

Scheduled to operate in about Apr. to Sep.

\* Tours may be suspended or canceled at the discretion of the operating company due to rainstorm, temperature, or other bad weather conditions that may interfere with safe operation.  
\* Course and tour durations are subject to change, and tours may be canceled due to events, traffic regulations, and other reasons. \*In wet weather, raincoats will be provided.

## SKY BUS KYOTO

Take a drive right around! (W2)



Goes around the city in approx. 1 hr. You can enjoy the views of Kyoto from your window.

Price	Adult: 2,300 yen Child: 1,150 yen
Starting point	JR Kyoto Station, Karasuma Exit
Departure time	9:30   11:30   14:00   16:00
Period of operation	We will notify you on our website. *Departure times vary depending on the day.
Required time	Approx. 1 hr.

◎ Course of operation (All sightseeing information will be given while you enjoy the sights from the bus window.)

- JR Kyoto Station, Karasuma Exit
- Nishi Hongwanji Temple
- Nijo-jo Castle
- Raizai Family Residence
- Kyoto Gyoen National Garden
- Kamo Ohashi Bridge (Daimonji)
- Lake Biwa Canal
- Heian Jingu Shrine Otorii (Great Shrine Gate)
- Shoren-in Temple
- Chionin Temple, Sanmon Gate
- Yasaka-jinja Shrine
- Minamiza Theatre
- Nidec Kyoto Tower, etc.
- JR Kyoto Station, Karasuma Exit

\*You can get off at Gion Bus Stop.



A convenient **Kansai Airport Limousine Bus** service between Kansai International Airport and Kyoto Station is also available. Please see the official website (<https://www.keihanbus.jp/limousine/kix/>) for more information, including timetables.

<Fare (e.g. between Kansai International Airport and Kyoto Station Hachijoguchi Exit)>

One-way: Adult: 2,800 yen, Child: 1,400 yen  
Round-trip: Adult: 5,100 yen (valid for 14 days from the outward trip), 4,100 yen (on the same day)



## Chartered bus

### Keihan Bus

Key areas: Kyoto, Osaka, Shiga  
Number of buses: 5 large buses

We provide not only attentive service but also excellent facilities including spacious seating, TV, DVD, karaoke, and a refrigerator.



### Keihan Kyoto Kotsu

Key areas: All of Kyoto and parts of Osaka Tamba-Sasayama City, Hyogo  
Number of buses: 6 large buses, 1 small buses

We can also create a bespoke itinerary for your chartered bus trip and arrange accommodations and meals. We hope you enjoy using it for various purposes.



### Kojak Bus

Key areas: All of Shiga and parts of Fukui and Kyoto  
Number of buses: 9 large buses, 2 medium buses

We provide excellent services on our sightseeing buses designed with a motif of the grebe, Shiga's prefectural bird. We look forward to welcome you soon.



### Keifuku Bus Group

Key areas: Fukui and Ishikawa  
Number of buses: Keifuku Bus: 16 large buses, 2 medium buses, 2 small buses  
Fukui Kotsu: 10 large buses, 5 medium buses, 3 small buses  
Keikan Kotsu: 4 large buses, 6 medium buses, 5 small buses

With an expansive fleet ranging from large buses to shuttle buses, the Keifuku Bus Group helps customers to travel in comfort.



### Kyoto Bus

Key areas: Kyoto City and other nearby cities, towns, and villages  
Number of buses: 5 large buses, 6 medium buses, 6 small buses

It is useful for visiting famous places in Kyoto, short trips, school recreation, or group trips.



### Kyoto Keihan Bus

Key areas: Kyoto and Hirakata City, Osaka  
Number of buses: 8 large buses, 2 medium buses, 6 other buses (microbus, etc.)

Nicknamed "Urara," our buses are designed with the twelve layered ceremonial kimono motifs and loved by everyone. Customers can choose from large, medium, or micro buses according to their needs.

# Eizan Cable Car and Ropeway

Connecting about 1.3 kilometers between Cable Yase Station and Cable Hiei Station in about nine minutes, the 561-meter ascent is the largest in Japan. It passes through a picturesque tunnel of foliage, and you can enjoy a panoramic view of Kyoto City from the window. It takes about three minutes to Hieisancho Station by the Ropeway.



Capacity: Eizan Cable Car: 100 people, Eizan Ropeway: 30 people  
\*Winter suspension period from early January to mid-March.

## Fare

	Cable Car (Between Cable Yase Station and Cable Hiei Station)		Ropeway (Between Rope Hiei Station and Hieisancho Station)	
	One-way	Round-trip	One-way	Round-trip
Adult	600 yen	1,200 yen	400 yen	800 yen
Child	300 yen	600 yen	200 yen	400 yen

## Group discount

	Cable Car (Between Cable Yase Station and Cable Hiei Station)	Ropeway (Between Rope Hiei Station and Hieisancho Station)
25 to 99 people	General: 10% discount, Student: 20% discount	
100 to 299 people	General: 20% discount, Student: 30% discount	

Fare waiver for groups: For a group of 25 to 49 people/1 passenger, 50 to 99 people/2 passengers, 100 to 149 people/3 passengers. Add one passenger for every 50 people. \*Please contact us in advance for group use. \*Please contact us for a group of 100 people or more.

# Sakamoto Cable Car

Covering about 2,025 meters, it has the longest operating distance in Japan. It connects Cable Sakamoto Station and Cable Enryakuji Station in about 11 minutes, and the panoramic view of Lake Biwa is spectacular.



Capacity: 141 people

## Fare

	One-way	Round-trip
Adult	960 yen	1,830 yen
Child	480 yen	920 yen

## Group discount

Number of people	Regular group	School group		
		Junior high school	High school	Other schools
Groups 5+	School trip discount	25% discount	15% discount	—
Groups 8+	10% discount	25% discount	15% discount	10% discount
Groups 25+	15% discount	30% discount	20% discount	20% discount
Groups 100+	20% discount	40% discount	30% discount	30% discount
Groups 300+	30% discount	50% discount	40% discount	40% discount

Fare waiver for groups: Fare waived for 1 passenger for groups of 25 to 99 people, and for additional 1 passenger every 50 people above 100

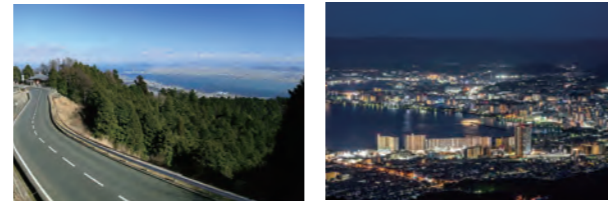
# Hieizan Driveway

An approximately 8.1 km toll road that connects Tanotani-toge in Shiga Prefecture's Otsu City to Hieisancho (Mt. Hiei Summit). Passing along the sides of Mount Hiei, this road offers a wonderful view of Lake Biwa's southern shore from Yumemigaoka located along the route and the city of Kyoto from the Tosendai parking lot, and features the World Heritage Site Hieizan Enryaku-ji Temple (To-do area) along the way, and the Garden Museum Hiei at the summit.

## Fare

Section (Tanotani-toge tollgate)	Light to standard vehicles	Two-wheeled vehicles	Microbuses	Large vehicles
Round-trip to Yumemigaoka / hotel	860 yen	580 yen	2,100 yen	3,400 yen
Round-trip to Hieizan Enryaku-ji Temple (To-do area) / Hieisancho (Mt. Hiei summit)	1,700 yen	1,160 yen	4,200 yen	6,800 yen
Round-trip to Hieizan Enryaku-ji Temple (Sai-to area / Yokawa)	3,270 yen	2,260 yen	8,100 yen	13,050 yen
Enryaku-ji Temple (To-do / Sai-to / Yokawa) -> Ogi Tollgate	2,430 yen	1,680 yen	6,000 yen	9,650 yen
Enryaku-ji Temple (Sai-to / Yokawa) -> Enryaku-ji Temple (To-do) -> Ogi Tollgate	2,430 yen	1,680 yen	6,000 yen	9,650 yen

\*All parking lots are free of charge



# Garden Museum Hiei

Located on the mountain at an elevation of 840 meters, with natural scenery dreamed of by Monet, Renoir, and Van Gogh recreated. Beautiful works of impressionist painters surrounded by blooming flowers. Colors are painted as if they were singing in praise of nature to soothe our hearts. Enjoy a relaxing and pleasant time at the garden with a view of Lake Biwa and Kyoto.



Opening hours: (Regular opening hours) 10:00 to 17:30 (last admission 17:00)  
(Fall opening hours) [Nov. 1 to Dec. 6] 10:00 to 17:00 (last admission 16:30)  
Closed: April 28 and Wednesdays (excluding some days) \* Winter closure from early December to early April

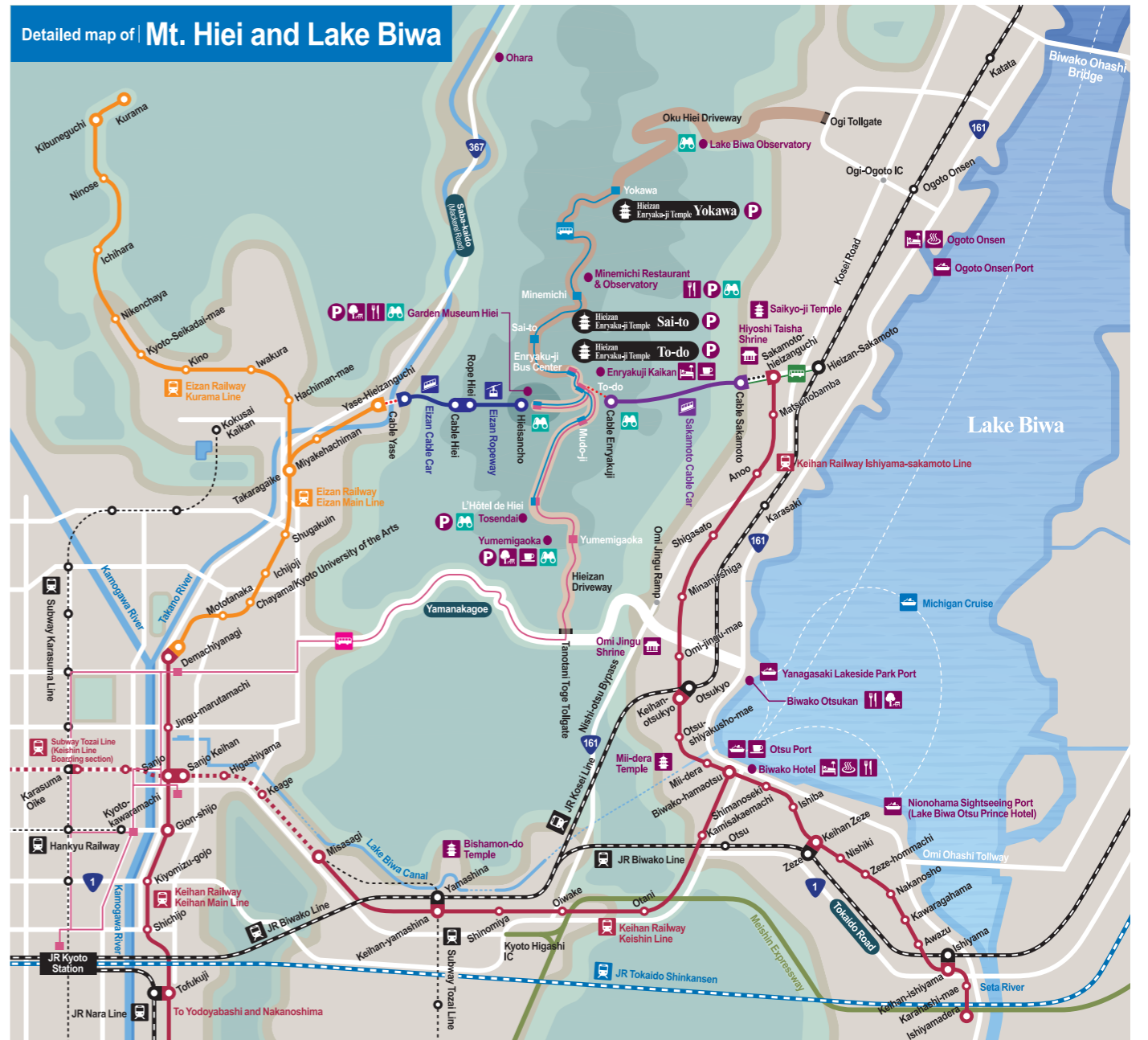
## Admission

	Apr. 18 to Nov. 23	Other periods
Adult (junior high school students and above)	1,200 yen	600 yen
Child (elementary school students)	600 yen	300 yen

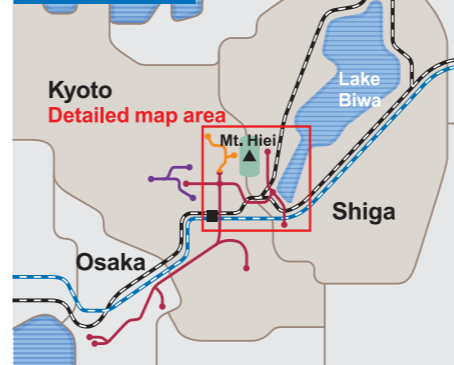
## Group admission

	Apr. 18 to Nov. 23	Other periods	
Groups 20+	Adult	1,080 yen	540 yen
	Elementary school student	540 yen	270 yen
Groups 100+	Adult	960 yen	480 yen
	Elementary school student	480 yen	240 yen

# Detailed map of Mt. Hiei and Lake Biwa



## Wide area map



## Map key

Hieizan Enryaku-ji Temple To-do Area	Kompon Chu-do, Dai-Ko-do, Amida-do, Hokke So Ji-in To-do, Enryakuji Kaikan	Hieizan Enryaku-ji Temple Sai-to Area	Ninai-do, Shaka-do	Hieizan Enryaku-ji Temple Yokawa Area	Yokawa Chu-do, Ganzan Daishi-do (Shiki Ko-do)	Hieizan Enryaku-ji Temple	The collective name for about 100 temple buildings scattered across three areas
Keihan Railway	Eizan Railway	Randen (Keifuku Electric Railroad)	JR Tokaido Shinkansen	JR Line	Other lines	Transfer station	Transfer (walking)
Sakamoto Cable Car	Eizan Cable Car	Eizan Ropeway	Sakamoto Cable Shuttle Bus	Hieizan Drive Bus (JR Kyoto Station - Mt. Hiei summit)	Hieizan Shuttle Bus (Round-trip within Mt. Hiei)	Lake Biwa Cruise	Bus stop
Temple	Shrine	Port	Hot spring	Hotel/Accommodation	Restaurant	Coffee shop	Park/Playground facility
Parking lot	Scenic spot	Historical street name					

## Access to Mt. Hiei

By train	By bus	By car
<p><b>By train</b></p> <p>Kyoto: JR Nara Line → Tofukoji Temple → Keihan Main Line → Demachiyangagi → Eizan Railway → Yase-Hieizanguchi → Cable Yase → To Mt. Hiei summit by Eizan Cable Car and Ropeway</p> <p>Kyoto: JR Tokaido Main Line + Kosei Line → Hieizan-Sakamoto → Kojak Kotsu → Cable Sakamoto → To Enryaku-ji Temple (To-do) by Sakamoto Cable Car</p>	<p><b>By bus</b></p> <p>Kyoto: Hieizan Drive Bus (Keihan Bus) → Sanjo Keihan → Keihan Demachiyangagi → Demachiyangagi Station → By Drive Bus to Hieizan Enryaku-ji Temple (To-do area) / Hieisancho (Mt. Hiei summit)</p> <p>Katata/Ogoto Onsen → Okuhiei Drive Bus (Kojak Kotsu) → Yokogawa → Mountain Shuttle Bus → Hieisancho</p>	<p><b>By car</b></p> <p>Kyoto City Center → Kita-Shirakawa Betto Intersection → Yamanakago → Tanotani Toge Tollgate</p> <p>Otsu City Downtown Area → Nishi-otsu Bypass → Omi Jingu Ramp → Yamanakago → Tanotani Toge Tollgate</p> <p>Ogoto/Katata → Kosei Road → Ogi-Ogote IC → Ogi Tollgate</p>

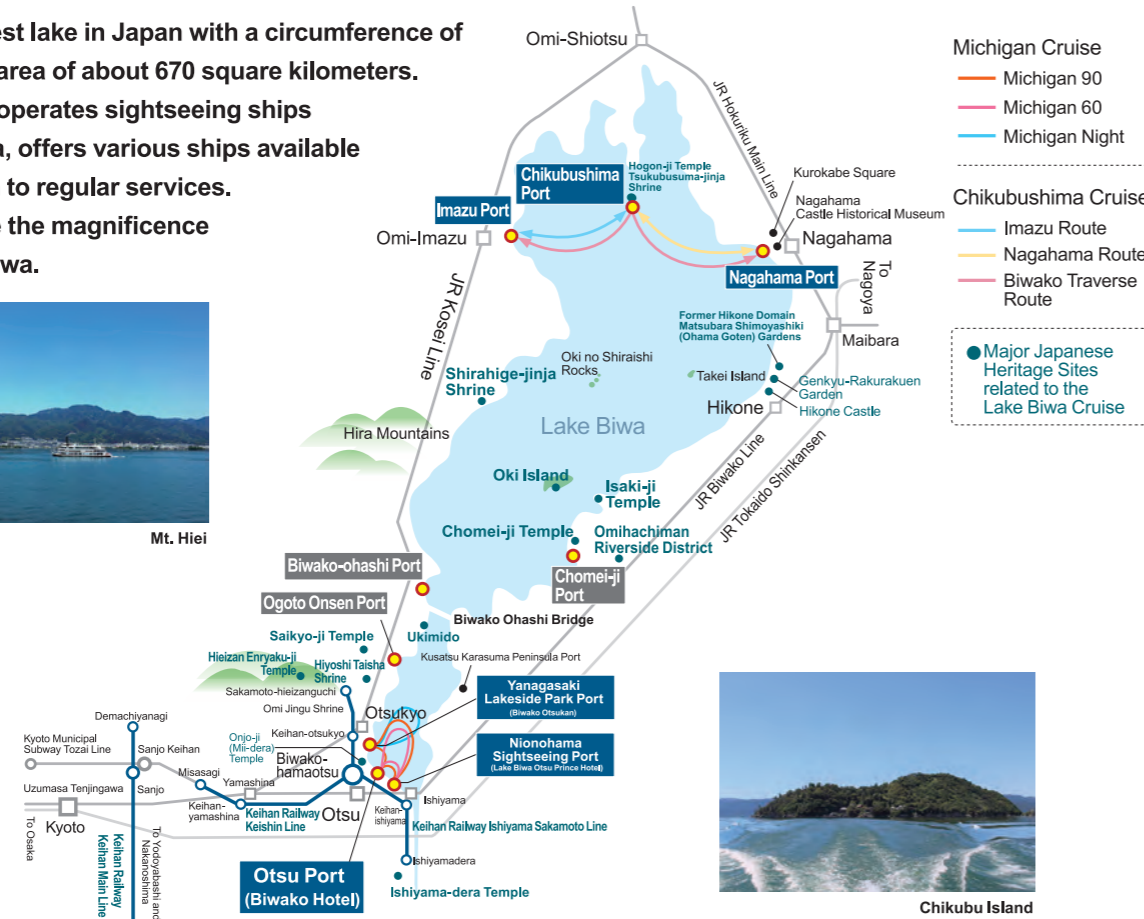
# Biwako Kisen

Lake Biwa is the largest lake in Japan with a circumference of about 235 km and an area of about 670 square kilometers.

Biwako Kisen, which operates sightseeing ships throughout Lake Biwa, offers various ships available for charter in addition to regular services. Come and experience the magnificence and beauty of Lake Biwa.



Mt. Hiei



Chikubu Island

## Michigan Cruise [Regular route]

Michigan is the most famous cruise ship on Lake Biwa. This entertainment cruise ship provides live shows and a variety of meals as well as a magnificent 360-degree view of Lake Biwa from the Skydeck on the top floor. You can choose from the Michigan 90, a 90-minute cruise where you can enjoy Lake Biwa during the daytime, the Michigan 60, a 60-minute cruise which is an easy way to enjoy Lake Biwa, and the Michigan Night, a cruise to enjoy the beautiful sunset and night view of Lake Biwa.

◎ Number of passengers: Max. 400 passengers for private use (or 150 for seated buffet style)



Michigan Length overall: 59.0 m, Gross tonnage: 1,045.61 t

Discount type	Number of passengers	Boarding fare (round-trip)	Discount rate	Conditions
General group	Groups 15+	Michigan 90 Adult: 3,400 yen Elementary school student: 1,700 yen	10% discount on boarding fares	
		Michigan 60 Adult: 2,800 yen Elementary school student: 1,400 yen		
School group	Groups 15+	Michigan Night Adult: 3,600 yen Elementary school student: 1,800 yen	Junior and senior high school student Different fare is applied *1 Elementary school student 10% discount on elementary school student boarding fares	A certificate from the school principal is required.

- A group reservation can be made from one year in advance of the scheduled cruise date. (Individual reservation: from three months in advance)
- If you are having a lunch buffet or course dinner, separate meal fee will be required in addition to the boarding fare.
- The adult fee applies to junior high school students and above.

### Boarding point (Otsu Port)

About 3 min. on foot from Keihan Railway Biwako-hamaotsu Station. About 10 mins' drive from Meishin Otsu Interchange. It is also possible to board from other ports of call (Nionohama Sightseeing Port and Yanagasaki Lakeside Park Port)

\*1 Please inquire regarding prices from FY2026 onward.

## Chikubushima Cruise [Regular service]

Chikubushima has long been worshipped as an island where gods dwell and has also recently become famous as a spiritual place. On the small island with a circumference of 2 kilometers is the Hogon-ji Temple, the 30th temple of the Saigoku Kannon Pilgrimage, and the Tsukubusuma-jinja Shrine.

\*If you wish to visit them when on Chikubu Island, the admission fee is 600 yen for adults and 300 yen for children. (Adult fee applies to junior high school students and above) (as of April 2026)



Discount type	Number of passengers	Boarding fare	Discount rate	Conditions
General group	Groups 15+	[Nagahama Route] Arrival and departure from Nagahama Port Adult: 3,800 yen Elementary school student: 1,900 yen	10% discount on boarding fares	
		[Imazu Route] Arrival and departure from Imazu Port Adult: 3,400 yen Elementary school student: 1,700 yen		
School group	Groups 15+	[Biwako Traverse Route] Between Imazu Port and Nagahama Port Adult: 3,600 yen Elementary school student: 1,800 yen	Junior and senior high school student Different fare is applied *1 Elementary school student 10% discount on elementary school student boarding fares	A certificate from the school principal is required.

- A group reservation can be made from one year in advance of the scheduled cruise date. (Individual reservation: from three months in advance)
- The adult fee applies to junior high school students and above.

### Boarding point (Nagahama Port)

About 10 min. on foot from JR Hokuriku Main Line Nagahama Station. About 15 mins' drive from Hokuriku Expressway Nagahama Interchange (Large vehicles/please get in contact in advance)

### (Imazu Port)

About 5 min. on foot from JR Kosei Line Omi-Imazu Station (Parking lots for large buses and free parking lots are available)

\*1 Please inquire regarding prices from FY2026 onward.

## Chartered cruise (Environmental study cruise)

Ideal for field trips and company study trips. We offer programs to learn about the water environment of Lake Biwa.

◎ Number of passengers: 40 to 80 \*We are operating with a maximum of 80 passengers currently. Fare: Please contact us.



High-Speed Ship "Megumi" Length overall: 35.9 m, Gross tonnage: 122.0 t

## Chartered cruise (Party cruise)

Special hospitality that you will only find on the lake county of Shiga. We offer memorable parties.

◎ Number of passengers: 80 to 250 (or 400 in the case of boarding only) Fare: Please contact us.



The largest cruise ship on Lake Biwa "Bianca" Length overall: 66.0 m, Gross tonnage: 1,216.0 t

- Michigan Chartering (Michigan Night) Plans are also available.
- We also offer tours of islands and other routes using a chartered high-speed ship.
- Please consult with us if you wish to depart or arrive at ports other than Otsu Port.

# OSAKA AQUABUS

A completely new way of seeing Osaka.  
Take an urban cruise around Osaka, city of water.  
We offer five different cruise ships for memorable sightseeing in Osaka, including the Aqua Liner that tours Osaka Castle and Nakanoshima, Himawari where you can also enjoy a meal, and Santa Maria that tours Osaka Port.



Aqua Liner

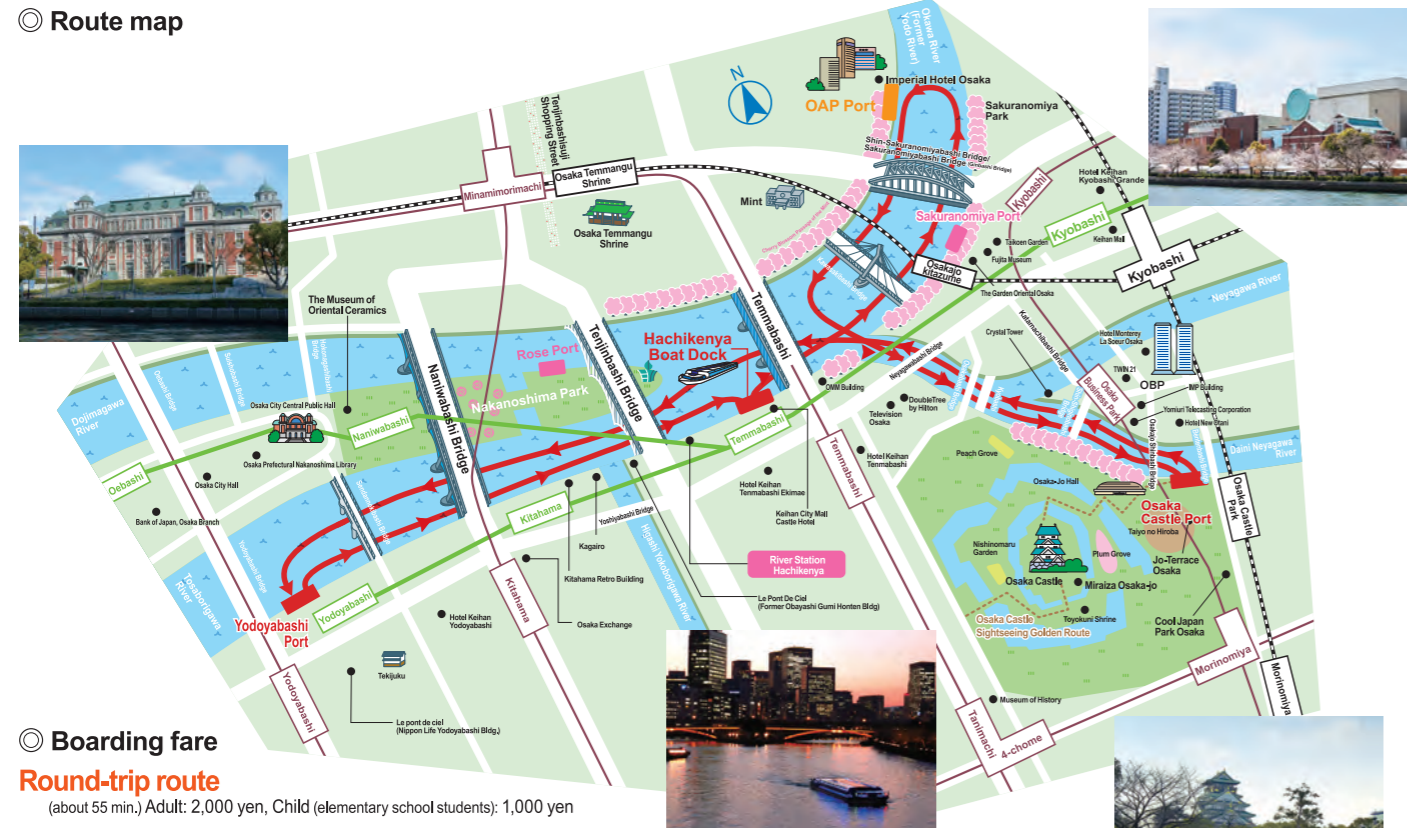


Santa Maria

## Aqua Liner

A classic Osaka waterside cruise around Osaka Castle and Nakanoshima.  
From just above the water's surface, passengers can take in views of central Osaka's cityscape, historic sites, seasonal scenery, and the everyday life of the people who live there. Tickets are available for sections of the cruise, making it a great transport option for sightseeing.

### Route map



### Boarding fare

**Round-trip route**  
(about 55 min.) Adult: 2,000 yen, Child (elementary school students): 1,000 yen

### Section Travel

Osaka Castle Port to Yodoyabashi Port (About 17 min.) Adult: 1,200 yen, Child (elementary school students): 600 yen  
Osaka Castle Port to Hachikenya Boat Dock (About 25 min.) Adult: 1,500 yen, Child (elementary school students): 750 yen  
Yodoyabashi Port to Osaka Castle Port (About 35 min.) Adult: 1,700 yen, Child (elementary school students): 850 yen  
Hachikenya Boat Dock to Osaka Castle Port (About 25 min.) Adult: 1,500 yen, Child (elementary school students): 750 yen

\*Fares and routes will differ during the special spring period (March 25 to April 10).

Discount type	Discount rate	Conditions
Group discount	10% discount	School groups 15+ (a certificate from the school principal is required)
Elementary school group discount	20% discount	
Junior high school, senior high school, and university group discount	40% discount	

Operates year-round except for the days indicated on the right. (Non-operating dates: all departures in the afternoon of July 25, two weekdays per week in January and February, other days as needed)

**Boarding point (Osaka Castle Port)** / train: Approx. 3 min. on foot from Osakajokoen Station on the JR Osaka Loop Line

**Boarding point (Hachikenya Boat Dock)** / train: A short walk from Temmabashi Station on Keihan Railway or Osaka Metro Tanimachi Line

**Boarding point (Yodoyabashi Port)** / Train: A short walk from Yodoyabashi Station on Keihan Railway or Osaka Metro Midosuji Line

**Chartered cruise** We will provide boxed lunches, a variety of beverages, and other items according to your budget.

**Charter fee** 1 ship, cruise of about 50 minutes  
**From 153,000 yen**

\*Fares will differ during the special spring period (March 25 to April 10).

Nakanoshima Circle Route is also available.

Only for chartered cruise. Please note that the ship may not be able to operate due to the tidal level and other reasons. Please contact us for details. (Not available from late March to mid April)

## Santa Maria

It is the largest sightseeing boat in Osaka, city of water, modelled after La Santa Maria, flagship of Columbus which reached the new world and built to be about twice as large. In this relaxing cruise that takes you around the Osaka bay area, we offer a wide variety of onboard activities such as food counter and Santa Maria Immersive Space where you can experience the undersea world.



### Boarding fare

**Day Cruise (Osaka Port Tour)** About 45 min.

Adult: 1,800 yen, Child (elementary school students): 900 yen

\*From October 1, 2026: Adult: 2,000 yen, Child (elementary school students): 1,000 yen

Discount type	Discount rate	Terms and Conditions
Group discount	10%	Groups 15+ (aged 1 or over)
Elementary school group discount	20%	School groups 15+ (a certificate from the school principal is required)
Junior high school, senior high school, and university group discount	40%	School groups 15+ (a certificate from the school principal is required)

Operate year-round except for the days specified below: Non-operating days:

All days from Mid-January to early February, specified non-operating days in February, and other days specified as needed

\*Please see the website for the schedule.

### Boarding point (Kaiyukan West Pier)

- By train: About 10 min. on foot from Osakako Station on Osaka Metro Chuo Line

- By car: About 5 min. from Tempozan Interchange on the Route 16 Osaka Port Line. 1,300 parking spaces available (paid parking of Osaka Aquarium Kaiyukan)

- Please note that the service may be canceled for safety reasons due to weather and nautical conditions.

### Common points for Aqua Liner and Santa Maria

#### Boarding fare for children

- Elementary school students.
- Children aged 1 or over who are not yet enrolled in elementary school, and are not accompanied by an adult or are on-board as a group.
- Children aged 1 or over who are not yet enrolled in elementary school and are accompanied by an adult, but exceeding one child per adult. (When group discount is applied, a fare will be charged for children aged 1 or over.)
- \* When boarding the Aqua Liner, one infant who sits on the lap of an adult is allowed free of charge.

#### Cancellation fee

- \*No refund will be made after the departure of your cruise.
- 200 yen per cancellation up to seven days prior to departure
- 10% of the face value of the ticket up to two days prior to departure
- 30% of the face value of the ticket up to before departure
- \*Multiple discounts cannot be used together.
- \*Conditions are different for restaurant plans and chartered ships. (Please contact us for details.)

## Himawari (charter plan)

This is a particularly elegant cruise ship in the water city of Osaka, built based on the river steamboats that criss-crossed the Yodo River in the Meiji Era. We provide casual meals to full-course meals on the chartered cruise according to your budget and request.



### Boarding fare (for cruise only)

Cruise time	Capacity	Private rental fee (incl. tax)
Less than 50 mins.	Max. 102 (incl. standing. Max. seats: 64)	112,500 yen
Less than 100 mins.	Max. 64	171,000 yen
Less than 120 mins.	Max. 64	216,000 yen

Boarding point (Hachikenya Boat Dock) - By train: A short walk from Temmabashi Station on Keihan Railway or Osaka Metro Tanimachi Line

★Custom lunch box meals can be provided. From 1,050 yen per person (lunch box/tea)  
Himawari's operation hours are between 11:00 (departure) and 21:00 (arrival).

\*In Spring, only the cruises departing at 19:00 and 19:30 from and arriving at Hachikenya Pier can be booked out.

# Hirakata Park

Hirakata Park (commonly known as Hirapar) is an amusement park that everyone from small children to adults can enjoy all year round, offering about 40 different attractions, aquarium, and events, as well as swimming pools in summer, and light decorations, skate rinks, and a snow play area in winter.

## Spring

The most colorful and gorgeous season of the year for the park. Roses in the Rose Garden and a variety of other flowers will be in full bloom.



## Autumn

Fall roses and seasonal flowers bring color to the park. The popular annual illumination event also gets underway.



## Illuminations

### Amusement Park of Light

Illumination events with elaborate lights shine year after year. As well as the beauty of the illuminated attractions, it gives you a unique experience of viewing the illuminated areas from the attractions of an amusement park!



## Planet Aqua Port

At the aquarium, where you can meet about 5,000 aquatic creatures of about 200 species, we exhibit popular creatures including cute axolotls, frogfishes, and seahorses. Spatial design inspired by space travel and ancient ruins is one of the highlights. Aliens may be hiding!?



## Summer

There is a wide variety of facilities available, including a huge stream pool, a pool for kids with play equipment, and a water slider called Canyon Ride that will take you down the canyon.



## Winter

Winter Carnival, where you can enjoy ice skating and snow play, is very popular. Illumination events are also held.



## Various events

Our event hall mainly features large exhibition-style events, while heroes and heroines from popular TV shows often visit our outdoor stage.



## Group admission

We offer a group admission fee, which is more economical than the regular admission fee, for groups of 25 or more.

\*Fees listed are for one person. \*Children under two years of age are free of charge. \*Please make a request in advance for group use. \*The following plans may not be available due to various circumstances.

### Admission

	Groups 25+	Groups 50+	Groups 100+
Adult (junior high school students and above)	1,800 yen	1,500 yen	1,400 yen
Child (2 years of age to elementary school students)	1,080 yen	900 yen	840 yen

### Admission + All Access Pass

	Groups 25+	Groups 50+	Groups 100+
Adult (junior high school students and above)	4,900 yen	4,600 yen	4,500 yen
Elementary school student	4,180 yen	4,000 yen	3,940 yen
2 years old to preschooler	2,980 yen	2,800 yen	2,740 yen

### Inquiries and bookings

☎ 0570-016-855

### Opening hours: During Hirakata Park opening hours

- \* Group tickets are purchased and issued at group reception (next to main gate ticket sales point).
- \* Groups of 24 persons or fewer cannot benefit from group fees.
- \* Group fees are available only when purchasing all tickets together and entering at the same time.

📷 Inquiries and bookings for group photos  
☎ 072-840-8771 (Uchiyama Photo Studio)

## Block reservation plan

Block reservations of Hirakata Park can be made on days when the park is closed or outside opening hours. We can offer the best plan for your budget and group size, be it for a shooting location, a school reunion in the amusement park, or corporate recreation. Please contact us and speak to our rental staff for details.

## Access

- From Osaka direction
  - Hanshin Expressway ...Approx. 9km from Moriguchi Route Terminus
  - Kinki Expressway ...Leave Settsu-minami Interchange, cross Tonkai-ohashi Bridge and turn left
  - Dainikeihan Road ...Leave Neyagawa-minami Interchange, turn left onto National Route 170, then turn right at the Isizuri Motomachi intersection
- From Kyoto direction
  - Dainikeihan Road ...Leave Katano-kita Interchange, turn right onto National Route 168, then turn left after approx. 3km

Please see the website for a detailed route

If you are using a satellite navigation system, search using the map code.  
If you are unable to enter the map code, please see the map of surrounding roads (on the right).

• Map code (parking lots 1 and 3): 11 782 191

### Parking fee (vehicle/day)

- Ordinary car: 2,000 yen
- Bus/microbus: 4,000 yen
- Motorcycle: Free of charge

1-1 Hirakatakoencho, Hirakata, Osaka, 573-0054  
TEL : 0570-016-855 FAX : 072-841-4689  
http://www.hirakatapark.co.jp

\* Special parking fees apply on particular dates. These dates will be announced on the website as soon as they are fixed.  
\* Parking lots 1 and 3 may not be available depending on circumstances.  
\* When visiting by bus or minibus, please reserve in advance.  
\* Please use parking lot 2 (free of charge) for motorcycle parking.  
\* There is a parking lot for bicycles (free of charge) next to the main gate.  
\* There is also a parking space for persons with disabilities, so please ask our staff.  
\* All prices are shown including tax. \* Some facilities and events are not covered by the all access pass. \* The all access pass does not provide entry to the pool or the Winter Carnival (skate area/snow area). \* Fees are required for viewing or participating in some events. \* Fees are required when using attractions. \* There are height and age restrictions for attractions. \* Last entry to the park is 30 minutes before closing. \* Photographs are not current. \* Information is current as of February 1, 2024. Please note that changes or cancellations may be made without prior notification.



In some situations, the park may be closed or the days and times of opening may be changed without prior notification.

# Nidec Kyoto Tower

Landmark encapsulating the full sense of Kyoto, including an observation deck looking out over Kyoto from 100 meters above ground as well as Kyoto Tower Sando at the bottom of the tower, which features famous and popular Kyoto stores.



## Access

- By train** ● Approx. 2 min. on foot from JR Kyoto Station Central Exit
- By plane** ● From Osaka International Airport: Approx. 65 min. (Airport Limousine Bus) → JR Kyoto Sta. Hachijoguchi Exit → Approx. 10 min. on foot  
● From Kansai International Airport: Approx. 80 min. (JR Kansai-Airport Express "Haruka") → JR Kyoto Sta. → Approx. 2 min. on foot
- By car** ● Approx. 20 min. from Kyoto-minami Interchange or Kyoto-higashi Interchange on the Meishin Expressway
- Nearby tourist attractions ● Higashi Hongan-ji Temple (approx. 5 min. on foot) ● Nishi Hongan-ji Temple (approx. 15 min. on foot)  
● Sanjusangen-do Temple (approx. 5 min. by bus) ● Kyoto National Museum (approx. 5 min. by bus)  
● To-ji Temple (approx. 2 min. by train or 5 min. on foot)

## Nidec Kyoto Tower Observation Deck (Nidec Kyoto Tower, 11F [Entrance])



Kyoto's tallest tower, standing at 100 meters, has an observation deck providing 360-degree views of the metropolitan areas of Kyoto, the ancient capital of Japan, surrounded by three mountains of Kyoto. Here you can experience everything Kyoto has to offer, with views that change completely depending on the time and season.

Opening hours	10:00-21:00 (last admission 20:30) *Opening hours are subject to change without prior notice.	
Tickets: Individual	[Adult] 900 yen [High school student] 700 yen	[Elementary/junior high school student] 600 yen [Child(3years old over)] 200 yen
Tickets: Group (20 or more persons)	[Adult] 700 yen (per person) [High school student] 550 yen (per person) [Elementary/junior high school student] 450 yen (per person) *Payment in full only *Group fees do not apply to mixed groups of 20 people of adults, high school students, and elementary/junior high school students.	

\* All information current as of April 2026. Please see the official website for the latest information.



## Telescope

Look through the telescope installed on the 5th floor observation deck to see famous Kyoto spots from 100 meters above ground. As well as historical sites, you can see as far as Osaka on a clear day. Enjoy scenery that can only be experienced from Nidec Kyoto Tower.



## Sky Lounge "KUU"

The interior, brought together by its chic lighting, is an adult atmosphere space. With counter seating, couples seating, box seating, and table seating, it can cater to all scenarios. Or hire out the entire venue as the perfect place for banquets or wedding after-parties.

**Location**  
3F, Observation Deck, Nidec Kyoto Tower

**Opening hours**  
Weekdays: 17:00 – 23:00 (last orders: 22:30)  
Weekends, public holidays: 14:00 – 23:00 (last orders: 22:30)

\*The entire lounge is non-smoking.  
\*A charge will apply for entry after 18:00 (400 yen per person).



## Kyoto Tower Sando (Kyoto Tower Building, 2F-B1F)



Kyoto Tower Sando is a commercial zone in Kyoto Tower Building in front of Kyoto Station. It is a combination of food hall, market and workshop, featuring 42 of Kyoto's famous and popular stores. You can also find compositions by the poet Tahi Saihate as pieces of public art around Kyoto Tower Sando.

You can also ask about joint sales promotions with travel agencies such as meal coupons, etc.

Opening hours	B1F / 11:00 - 23:00	*Hours may vary by store. *Opening hours are subject to change.
	1F / 10:00 - 21:00	
	2F / 10:00 - 19:00	

\*All photos are for illustrative purposes only.

## 2F WORKSHOP

Experience traditional Japanese culture **Also open to groups**



### Shichijo Kanshundo

Experience making seasonal fine Japanese confectionery called jonmagashi at the Shichijokanshundo store. You can make 4 sweets, enjoying one right there with a cup of matcha tea and taking the remaining 3 away as souvenirs. Open 4 times a day.

■Times and fees: Approx. 60-90 min., 3,300 yen  
\*Same-day booking accepted

■Seating capacity: Up to 42 persons



### Daiki Suisan Sushi Seminar (sushi-making workshop)

Sushi masters kindly teach you while showing examples, so even beginners, children and visitors from afar can enjoy participating. There are three options available: 3,300 yen for 8 pieces, 3,850 yen for 10 pieces, and 4,400 yen for 12 pieces.

■Times and fees: 90 min. per session, from 3,300 yen

■Booking must be made by 12:00 the previous day  
■Seating capacity: Up to 24 persons  
\*Bookings must be for a minimum of four persons.  
\*Can be arranged to start any time between 11 am and 6 pm



### Kyoto Kimono Rental wargo

Dress in kimono at reasonable prices starting from 3,300 yen, choosing from a vast collection ranging from highly popular antique designs to gorgeously patterned kimono. Dressing, accessories and hairpins are all free of charge, so just bring yourself.

■Fees: From 3,300 yen  
You can come to the store and book on the day if there are openings!

\*Priority is given to customers who have reservations.  
There may be some waiting time depending on reservations.



### Akaneya (traditional handicraft experience workshop)

Experience ceramic painting of Kiyomizu ware teacups, mugs, folding fans, ceramic bells and glass wind chimes, etc., and making rosaries connecting colorful natural rocks. Ceramic bells, glass wind chimes and rosaries can be taken away on the day, while other items will be sent at a later date.

■Times and fees: Approx. 60 min., from 1,200 yen  
■Seating capacity: Max. 42 people

## 1F MARKET

Kyoto's finest souvenirs in one place

This floor features a range of superb products from Kyoto, including local Japanese and Western-style sweets, sake, and cafe items. From typical Kyoto souvenirs to those that are exclusive to Kyoto Tower Sando, this may be the only place around Kyoto Station where you can find some of those items.

◎Number of stores: Approx. 20 stores (Otabe Kyobaum, Ochanokosaisai, Malebranche Kyoto Kitayama, Masuya Seika, etc.)



## B1F FOOD HALL

Enjoy Kyoto cuisine

### A food hall where you can walk around and enjoy tastes of Kyoto

Renowned local stores and much-talked about popular stores are found here, making the area ideal for everything from lunch to dinner and cafes to bars. There are approximately 450 seats across the floor, ensuring plenty of space for visitors to the Kyoto Station area.

You can enjoy a wide range of food from several outlets together with alcoholic beverages.

There are also vegan and vegetarian options to enjoy.

◎Number of stores: Approx. 18 stores (KYOTO TOWER SANDO Bar, Hiro Kyoto Yakiniku Restaurant, Gyozaadokoro Sukemasa, PANCAKE ROOM, etc.)



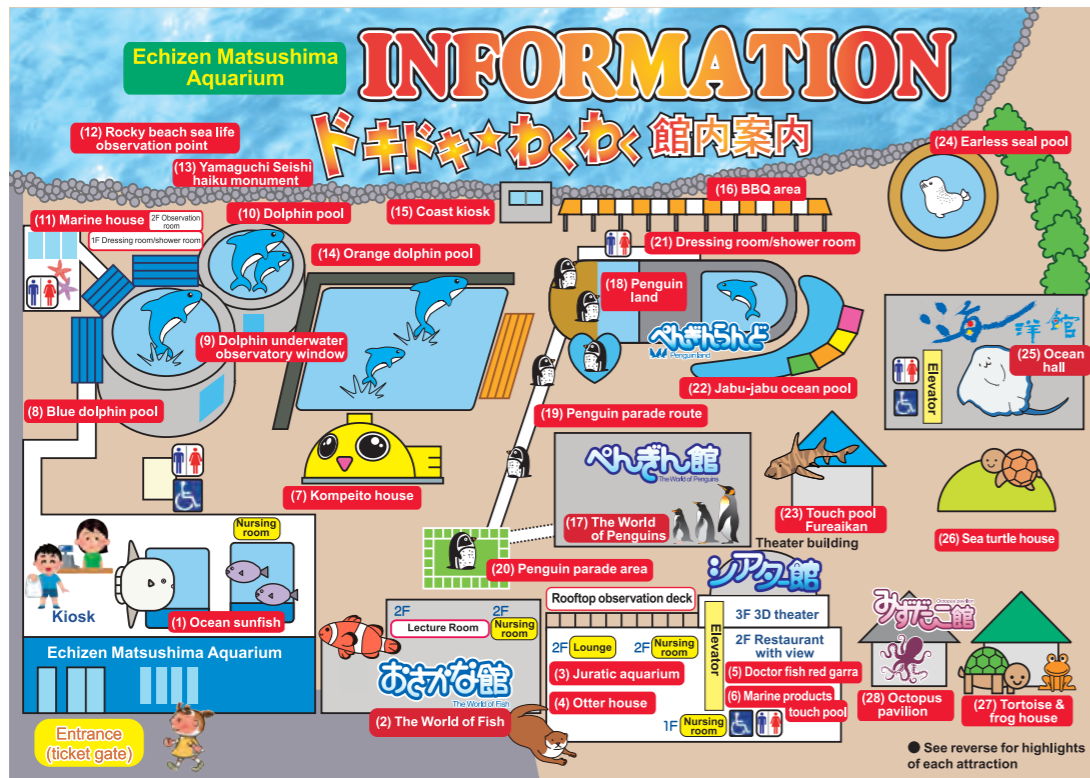
# Echizen Matsushima Aquarium

Enjoy hands-on learning at Echizen Matsushima Aquarium.

This aquarium is located in the Echizen-Kaga Kaigan Quasi-National Park in Sakai City, Fukui Prefecture, on the Sea of Japan.

It also features restaurants with unbroken views of the Sea of Japan and souvenir shops selling aquarium goods.

## Aquarium map



## Octopus pavilion



Six tanks of differing sizes are embedded in the legs of a giant octopus, enabling anyone to get up close and personal with a massive octopus.

## Attractions

### Dolphin show



A dynamic, enjoyable dolphin show featuring bottlenose dolphins.

## Ocean hall

### Sea of coral



A relaxation floor where the water surface is covered by a transparent acrylic board. Please take your shoes off before entering. Enjoy a dream experience of floating on the sea surface.

### Penguin parade time



Watch the penguins' movements up-close. Take photos as you please.

### Large ocean tank



Large fish such as sea rays and sharks, and a school of approximately 3,000 sardines are on show.

### Otters' dinnertime



Watch cute otters being fed their dinner.

## Hands-on & feeding experiences

### Jabu-jabu ocean pool



Enjoy swimming with fish and feeding them in this pool.

### Touch pool Fureaikan



Encounter creatures with the sense of touch, including real shark skin and the surface of a ray.

### Marine products touch pool



You can touch Echizen crabs, spiny lobsters, eels and more, and feed Japanese sea bream and black rockfish, etc.

### Feeding experiences



Enjoy feeding sea turtles in the sea turtle pool. There is also an area for feeding tortoises and fish.

### Play with earless seals



You can touch earless seals while listening to various explanations from aquarium staff.

### Doctor fish red garra



Get your hands cleaned by the ticklish but pleasant doctor fish.

## Fees

### General fees (consumption tax included)

	Adult	Elementary and junior high school student	Child (aged 3 or over)	Infant (under 3)
General	2,200 yen	1,200 yen	600 yen	—
Groups (20+)	1,980 yen	1,080 yen	540 yen	—
Groups (100+)	1,760 yen	960 yen	480 yen	—

### Annual Passport fee (consumption tax included)

	Adult	Elementary and junior high school student	Child (aged 3 or over)	Infant (under 3)
General	5,500 yen	3,000 yen	1,500 yen	—

### "Octopass" Premium Annual Passport (consumption tax included)

30,000 yen
------------

### Special fee (consumption tax included)

	Adult	Elementary and junior high school student	Child (aged 3 or over)	Infant (under 3)
Field trips (school groups)	1,400 yen	700 yen	350 yen	—
Facilities for disabled persons / welfare facilities for elderly persons	1,100 yen	600 yen	300 yen	—
Persons with a certificate of disability	—	—	—	—

### Advance purchase bulk discount tickets (12 tickets) (consumption tax included)

Adult	Child: For elementary and junior high school students	Infants: For children aged 3 and over
22,000 yen	12,000 yen	6,000 yen

### Night block reservation plan (consumption tax included)

150,000 yen
-------------

\*Separate fee of 50,000 yen (incl. consumption tax) applies for dolphin show  
\*See website for details.



## Access



### Public transport (plane/train/bus)

- From Ishikawa Prefecture/Komatsu Airport  
Approx. 60 min. by rental car ... Approx. 30 min. in direction of Kaga Interchange on National Route No. 8  
→ Approx. 30 min. via National Route 305
- From Awaraonsen Station on Hokuriku Shinkansen, Keifuku Bus: Approx. 30 min. in direction of Tojinbo. Right next to Echizen Matsushima Aquarium-mae bus stop
- From Fukui Station on Hokuriku Shinkansen  
Echizen Railway: Approx. 40 min. to Awara-Yunomachi Station on Mikuni Awara Line → Approx. 15 min. after bus transfer

### By car

- Approx. 20 min. from Kanazu Interchange on the Hokuriku Expressway in the direction of Tojinbo
- Approx. 25 min. from Kaga Interchange on the Hokuriku Expressway in the direction of Tojinbo via National Route 305
- Approx. 25 min. from Kanazawa-nishi Interchange on the Hokuriku Expressway to Kaga Interchange  
→ Approx. 25 min. via National Route 305

\*Parking lot is available. Parking lot capacity: 450 spaces (free of charge) \*Free shuttle bus operates from nearby provisional parking lot during busy season.

74-2-3 Mikunicho Saki, Sakai, Fukui 913-0065 TEL: 0776-81-2700 FAX: 0776-82-2296

# Kuzuha Golf Links

Renovated and reopened in 2019.  
 Enjoy a full golf course just 2 minutes away from Kuzuha Station.  
 Reasonably priced and convenient for access from Osaka,  
 Kyoto and Shiga!  
 Golf carts can also be driven on fairways!



## Access

By train ○ Alight at Keihan Railway Kuzuha Station and walk for approx. 2 min.  
 By car ○ Approx. 10 min. from Oyamazaki Interchange on the Meishin Expressway  
 Approx. 10 min. from Kumiya Yodo Interchange on the Keiji Bypass  
 Approx. 15 min. from Kyotanabe Matsui Interchange on the Dainikeihan Road

## Fees

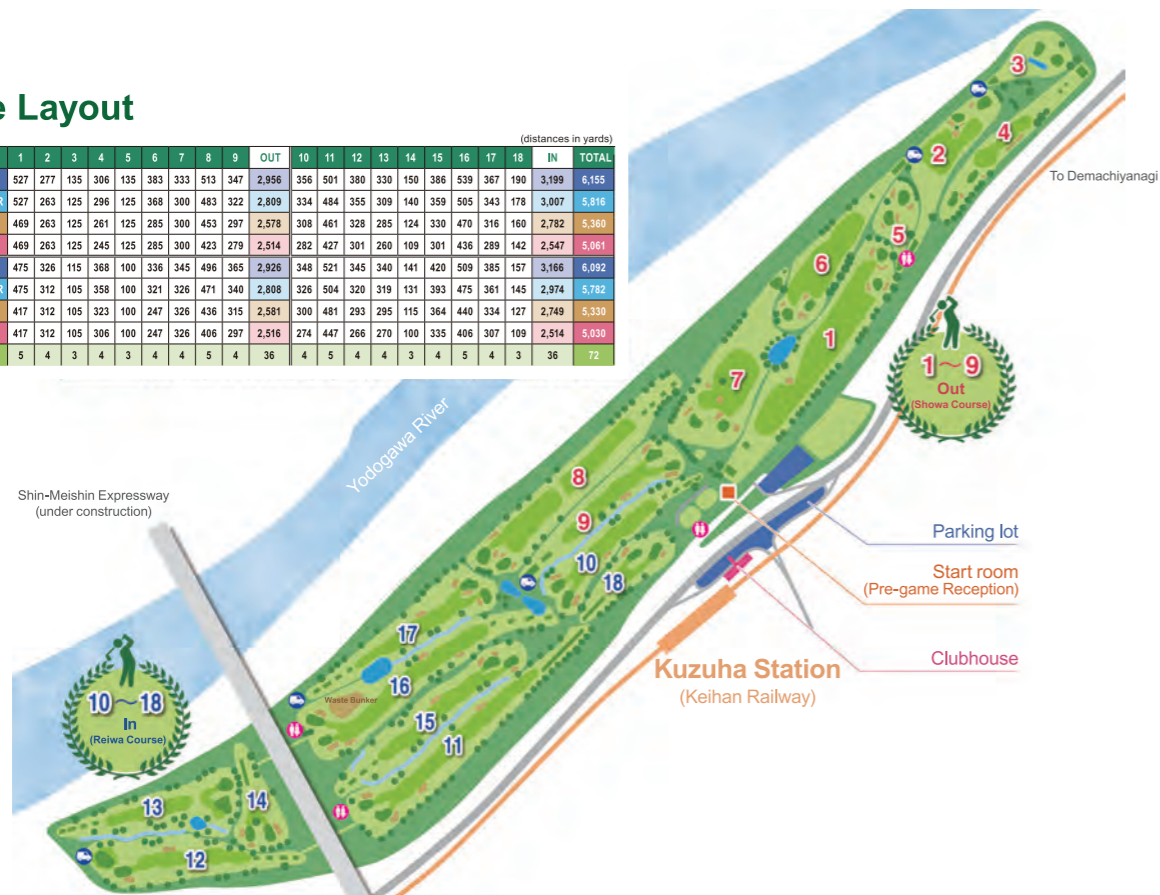
18-hole play (including lunch, golf cart, tax, etc.)	
Weekdays	Saturdays, Sundays and holidays
From 7,100 yen	From 9,300 yen

\* The fees may be changed without prior notification. Please see the official website for more information.

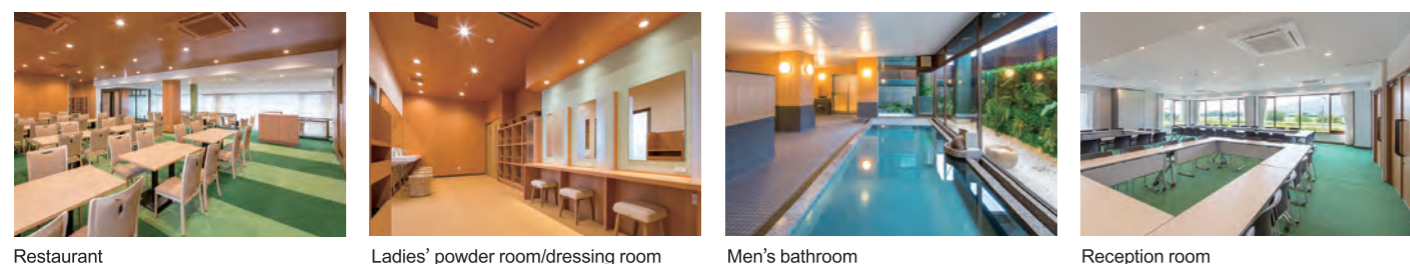
## Course Layout

### Course Layout

HOLE	(distances in yards)																		TOTAL			
	1	2	3	4	5	6	7	8	9	OUT	10	11	12	13	14	15	16	17		18	IN	
KORAI	BACK	527	277	135	306	135	383	333	513	347	2,956	356	501	380	330	150	386	539	367	190	3,199	6,155
	REGULAR	527	263	125	296	125	368	300	483	322	2,809	334	484	355	309	140	359	505	343	178	3,007	5,816
	GOLD	469	263	125	261	125	285	300	453	297	2,578	308	461	328	285	124	330	470	316	160	2,782	5,360
TIFTON	LADIE'S	469	263	125	245	125	285	300	423	279	2,514	282	427	301	260	109	301	436	289	142	2,547	5,061
	BACK	475	326	115	368	100	336	345	496	365	2,926	348	521	345	340	141	420	509	385	157	3,166	6,092
	REGULAR	475	312	105	358	100	321	326	471	340	2,808	326	504	320	319	131	393	475	361	145	2,974	5,782
PAR	GOLD	417	312	105	323	100	247	326	436	315	2,581	300	481	293	295	115	364	440	334	127	2,749	5,330
	LADIE'S	417	312	105	306	100	247	326	406	297	2,516	274	447	266	270	100	335	406	307	109	2,514	5,030
	REGULAR	417	312	105	306	100	247	326	406	297	2,516	274	447	266	270	100	335	406	307	109	2,514	5,030
PAR		5	4	3	4	3	4	4	5	4	36	4	5	4	4	3	4	5	4	3	36	72



## Facilities



Restaurant Ladies' powder room/dressing room Men's bathroom Reception room

# OMM

Conveniently linked to the railway station via an underground passage, this building is a Temmabashi landmark and hosts tenants, exhibition halls, conference rooms, rental offices, and more, as well as offering diversity and convenience.



## Exhibition halls/conference rooms

### 2F/B1F exhibition halls

There are a range of large and small exhibition halls, with 12 on the 2nd floor and one in the basement. The halls on the 2nd floor can be linked together, meaning that as well as for exhibitions and sales, they can also be used for a range of other purposes such as large seminars.



### 1F Glan

The airy, high-grade venue Glan, with a ceiling height of 3.6 m, is located close to the front entrance to the building on the first floor. Praised for its ease of loading and unloading, it can also be used as an exhibition space as well as a conference room.



### 2F Conference rooms

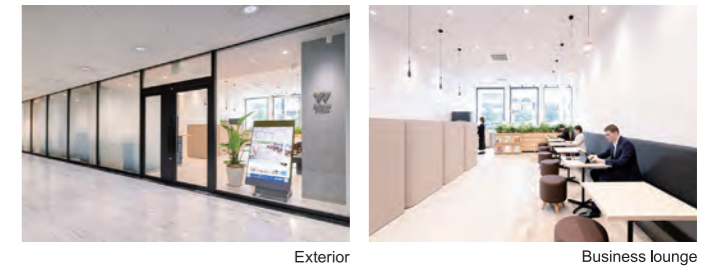
The dedicated conference room floor is reached by stairs from the second floor, and is equipped with a total of seven conference rooms. They are separate from other floors, which offers a sense of tranquility during use.



## Service Office

### 1F Service Office W Temmabashi

A spacious business lounge with dedicated private rooms to ensure privacy and a ceiling height in excess of 3.5 m as well as the furniture and equipment required for business and a staffed reception service.



Conference room prices



## Dining, stores, and services

### B2F

25 eateries offer ample opportunity for a culinary adventure.



Tsurumaru udon honpo Freshness Burger

### B1F

Establishments on this floor include a pharmacy, beauty parlor, relaxation facilities, and a post office.



Sakura Pharmacy Osaka Temmabashi Station Store Raffine

## Access



◎ Passage to OMM B2F from Keihan Temmabashi Station east exit and Osaka Metro Tanimachi Line north ticket gates

\*Direct access to OMM B2F from Temmabashi Station Exit 1 on the Osaka Metro Tanimachi Line

◎ You can also get to OMM from your nearest expressway, and parking lots are available.

- Parking lot 1 (140 spaces (approx.)) ¥400/20 min. all days  
 Max. charge 8:00 - 22:00: ¥2,500 22:00 - 8:00: ¥1,200
- Parking lot 2 (86 spaces (approx.)) 8:00 - 22:00: ¥400/20 min. 22:00 - 8:00: ¥100/60 min.  
 Max. charge: ¥2,500 (within 24 hours of entry)

\*The maximum charge is applied every 24 hours.

OMM Department, Keihan Tatemono Co., Ltd, 1-7-31 Otemae, Chuo-ku, Osaka 540-6591  
 Tenant sales: Tel 06-6943-2011 Exhibition halls/conference room sales: Tel 06-6943-2020  
 Service Office Officer TEL: 06-4792-8585



## Kuzuha Mall

This highly fashionable mall features a wide range of facilities including high-quality urban fashions and interiors, with everything ranging from outdoor goods to amusements. With approximately 230 specialist shops, Keihan Department Store, Aeon Food Style by Daiei, Izumiya, and the SANZEN-HIROBA Keihan Railway museum zone, this is the flagship of the Keihan Group.

**Access:** Right next to Keihan Railway Kuzuha Station

**Main stores:** UNIQLO, ZARA, EDION, MUJI, DAISO, ABC-MART, SPORTS DEPO/AlpenOutdoors/GOLF5, UNITED ARROWS green label, URBAN RESEARCH DOORS, FREAK'S STORE, TOHO Cinemas, Crayon Shin-chan My Playful Dream Park, and more



## Keihan Mall/K-Buratto/Kiki Kyobashi

Keihan also operates the Keihan Mall urban shopping facility that is directly connected to Kyobashi Station, the K-Buratto underpass shopping street with its many foodie spots, and Kiki Kyobashi, an integrated commercial that delivers value with rich variety.

**Access:** Right next to Kyobashi Station on Keihan Railway, Osaka Metro or JR Line

**Main cosmetics brands:** ALBION DRESSER, FANCL, M·A·C, MARKS & WEB, L'Occitane, etc.  
**Other stores:** UNIQLO, MUJI, ABC-MART, 3COINS, Starbucks Coffee, Kura Sushi, Saizeriya, DAISO, and more.



## Keihan City Mall

Directly connected to Temmouri. This convenient, compact and friendly mall features everything you need for a happy lifestyle, from an urban food market to popular fashions, daily necessities, books, home appliances and more.

**Access:** Rihi Station on Keihan Railway, Osaka Metro or Osaka City Bus

**Main cosmetics stores:** MiSUGI / SK-II, @cosme STORE / MiSUGI (Shiseido, DECORTÉ, Global Kanebo, and more), Shop In  
**Main stores:** UNIQLO, GU, MUJI, Matsumoto Kiyoshi, EDION, Akachan Honpo, JINS, 3COINS+plus, Nitori, DAISO, SEJO ISHII, and more



## Hirakata Mall

Opened in September 2024 as a commercial area in the Station Hill Hirakata complex that boasts commercial facilities, office spaces, residences, hotels, and public organizations. This mall is directly connected to the East Gate of Hirakatashi Station and offers a wide variety of about 90 stores covering everything from fashion and lifestyle accessories to gourmet food and supermarkets.

**Access:** Right next to Keihan Railway Hirakatashi Station

**Main cosmetics stores:** Nanairo Beaute (Aesop, IPSA, SABON, THREE, BAUM, and more), BEAUTÉ de BLEUE (ALBION, DECORTÉ, Clé de Peau Beauté, ETVOS, and more)  
**Main stores:** BEAUTY&YOUTH UNITED ARROWS Hirakata Women's Store, SLOBE IENA, C-Smart (Apple Premium Partner), 3COINS+plus, Hands, TONDEMI Hirakata, Standard Products, Matsumoto Kiyoshi, and more



## YODOYABASHI Station One

Opened in June 2025 as the tallest landmark building in the area about 150 meters high based on the concept of a "Life Connecting Oasis." This complex features the Yodoyabashi Sky Terrace, an observation deck with a panoramic view of Osaka on the top floor (30th floor), in addition to offices, restaurants, and shops.

**Access:** Right next to Yodoyabashi Station on Keihan Railway or Osaka Metro

**Main stores:** Sarutahiko Coffee, THE CITY BAKERY, Mori no Ohagi and Kitsuneiro, une osaka, and more

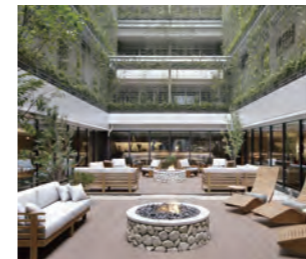


## Keihan Department Stores

Moriguchi/Hirakata/Kyobashi/Kuzuha/Suminodo

Keihan operates five department stores in total, four along the Keihan Railway – three of them directly connected to the station (Moriguchishi Station, Hirakatashi Station and Kyobashi Station) and one in front of Kuzuha Station – and one right next to Suminodo Station on the JR Gakkentoshi Line. This locally rooted department store offers a wide range of products, from food and fashion to lifestyle solutions.

**Main cosmetics brands (Moriguchi Store):** SHISEIDO, Clé de Peau Beauté, DECORTÉ, FANCL, SK-II, POLA, BeautyTamai (Albiona), Mama & kids, and more



## Good Nature Station

Based on the concept of bringing together products and ideas that bring vibrancy to people and the planet, and offering only unbelievably good ingredients that are delicious, enjoyable, and trustworthy, GOOD NATURE STATION sells products including organic foodstuffs and cosmetics that use naturally-derived ingredients. The GOOD NATURE approach to daily living is to incorporate healthy and good things in your own way while enjoying yourself instead of refraining.

▶ See P15 for details



## Moyori-ichi Grocery (Keihan The Store)

This store aims to be convenient and the store of choice for the local community, and in addition to quality food such as daily foods prepared in-house, daiki sushi, and fine bread, its in-station stores offer "Rail Gourmet" that brings together appealing products from popular shops and hidden well-known stores along the Keihan Line.

**Stores:** Temmabashi Station, Kyobashi Station (inside and outside), Korien Station, Neyagawashi Station, Kuzuha Station, Gion-shijo Station, Sanjo Station, Sanjo Station Norengai, and in other locations



## FREST (Keihan the Store)

FREST is a high-quality supermarket that provides fresh food products that set customers' minds at rest while striving for the highest standards.

**Stores:** Neyagawa, Temmabashi, Matsui-Yamate, Nagao, Korien



## THE STORE (Keihan the Store)

The approach to daily living of this supermarket is to contribute to environmental conservation, the local economy, and the passing down of culture while incorporating healthy and good things in your own way while enjoying yourself.

**Stores:** Hirakata Mall Store



## SWEETS BOX (Keihan the Store)

With the image of a confectionary box in a train station, the exclusive confectionary shop offers famous brands and limited-edition products from trending stores.









It offers an always-fresh lineup of products to bring a touch of indulgent joy to those who use the station every day.

**Stores:** Yodoyabashi, Panante Keihan Temmabashi, Kyobashi, Keihan Kuzuha, Gion-Shijo, (Stores: Kansai (12), Kanto (26), Tokai (2))





# Official Keihan Railway Accounts

Find information to get the best value at stores along Keihan Lines and from the Keihan Group!

## Japanese

-  Information for Exploring with Keihan Railways 
-  Information for Exploring with Keihan Railways 
-  Information for Exploring with Keihan Railways 
-  Information for Exploring with Keihan Railways 

## English

-  Keihan Electric Railway Co., Ltd. 
-  keihan\_trip 

## Chinese (traditional)

-  京阪電氣鐵道株式會社 

## Chinese (simplified)

-  京阪铁道大阪京都之旅  
\* WeChat is accessible only through the app. 
-  京阪铁道大阪京都之旅 
-  京阪KEIHAN 

► Read the QR code below for ticket reservations for experiential content accessible using Keihan Railways.



Go to Trip.KANSAI for trips using Keihan Railways!

# trip.KANSAI

Reservations for experiential content accessible using Keihan Railways are available online.

Head out and explore with Keihan!

Let's Trip!

KEIHAN