

# KEIHAN GROUP COMPREHENSIVE GUIDE

Keihan Group Comprehensive Guide (From April 2025)



For reservations/inquiries regarding Keihan Group's hotels and leisure facilities:

## Keihan Holdings Co., Ltd.

Experiential Value Co-creation Supervisor, Corporate Planning Office  
Keihan Group Sales Promotion Center for Tourism

TEL: (+81) 6-6945-9696

FAX: (+81) 6-6944-2584

E-MAIL: [travel@keihan.co.jp](mailto:travel@keihan.co.jp)

OMM Bldg. 10F, 1-7-31 Otemae, Chuo-ku, Osaka, 540-6591, Japan

Keihan Railway <https://www.keihan-holdings.co.jp/>

Keihan Group Facility Introduction (for Travel Agents) <https://www.keihan.co.jp/agent/en/> ▶▶

Keihan Group Reservations <https://reserve.keihan.co.jp/>



# Keihan Group Businesses

The Keihan Group's businesses are part of our customers' everyday life as well as their ceremonial occasions in Osaka, Kyoto, Shiga, and all other areas of Japan.

We will make proposals for a new kind of sightseeing filled with the appeal that only a company that is rooted in its community can offer.

Feel free to get in touch with us.

## SAPPORO

- Hotel Keihan Sapporo

## FUKUI

- Hotel Keifuku Fukuekimae  
- Echizen Matsushima Aquarium

## SENDAI

- Hotel Keihan Sendai

## TOKYO

- Hotel Keihan Tsukiji Ginza Grande  
- Hotel Keihan Asakusa  
- Hotel Keihan Tokyo Yotsuya

## NAGOYA

- Hotel Keihan Nagoya



## Keihan Group Overview (as of March 31, 2024)

Consolidated subsidiaries	41 (including Keihan Holdings and companies using the equity method)
Employees (consolidated)	6,353
Operating revenue (consolidated)	¥302.1 billion
Main businesses	Transportation: Rail and bus, amusement facilities Real estate: Sales and leasing Distribution: Department stores, shops, shopping mall management Leisure services: Hotels and leisure Other: Credit cards

## 未来は、楽しく変えていこう。 KEIHAN BIOSTYLE PROJECT

The Keihan Group is working on a project called the BIOSTYLE PROJECT to help achieve the SDGs. Here you can find out about sustainable tourism.



\*Some facilities offer SDG training tours.

■ Getting to the Keihan Line from Osaka/Umeda  
■ Getting to the Keihan Line from Osaka/Umeda (Osaka Metro Midosuji Line) → Yodoyabashi (JR Loop Line) → Kyobashi

Hotel Keihan Universal Tower Osaka

Sightseeing boat "Santa Maria"

Kansai International Airport



OSAKA

KYOTO

SHIGA

BIWAKO



## CONTENTS

HOTEL	4
RAILWAY/ BUS	24
LEISURE	32
DISTRIBUTION	45

## Getting to the Keihan Line from Kansai International Airport

(Nankai Main Line) → Namba → (Osaka Metro Midosuji Line) → Yodoyabashi  
(Nankai Main Line) → Tengachaya → (Osaka Metro Sakaisuji Line) → Kitahama  
(JR Hanwa Line) → Tennoji → (JR Osaka Loop Line) → Kyobashi



# Hotel Keihan Universal Tower

Osaka

From top-floor Tower Premium rooms inspired by luxurious passenger ships to rooms with low beds perfect for small children and rooms for up to six guests complete with bunk beds, this hotel is perfect for families and groups.

The panoramic natural hot spring on the 31st floor (separate fee applies) also boasts a sauna.

The official hotel of Universal Studios in the area's tallest building, just a few moments on foot from JR Universal City

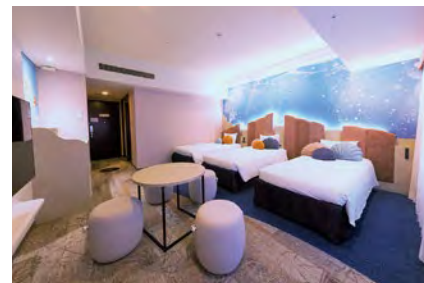


\*All photos are for illustrative purposes only.  
Universal elements and all related indicia TM & © 2021 Universal Studios. All rights reserved.



## GUEST ROOM

The renovation of all rooms with the concept of the underwater world and luxury cruise ships has been completed this year.



Superior room



[Tower Premium] Superior room

### No. of guest rooms: 641 (Hotel capacity: 2,365 people)

- Casual rooms (21 m<sup>2</sup>): 10
- [Theater] Casual rooms (21 m<sup>2</sup>): 13
- Standard rooms (25 m<sup>2</sup>): 121
- Superior rooms (37 m<sup>2</sup>): 87
- [Bunkbeds] Standard rooms (25 m<sup>2</sup>): 33
- [Bunkbeds] Superior rooms (37 m<sup>2</sup>): 66
- Connecting rooms (37 m<sup>2</sup> + 25 m<sup>2</sup>): 41
- [Low bed] Standard triple rooms (25 m<sup>2</sup>): 66
- [Low bed] Superior quad rooms (37 m<sup>2</sup>): 65
- [Tower Premium] Standard rooms (25 m<sup>2</sup>): 71
- [Tower Premium] Superior rooms (37 m<sup>2</sup>): 51
- [Tower Premium] Deluxe rooms (37 m<sup>2</sup>): 12
- [Tower Premium] Junior suite (74 m<sup>2</sup>): 4
- Barrier-free rooms (37 m<sup>2</sup>): 1

Check-in: 15:00 / Check-out: 11:00

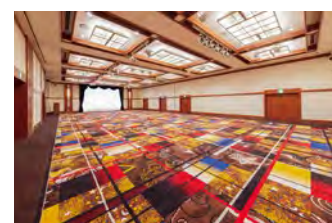
## RESTAURANT



### Sky Restaurant Top of Universal (max. seats: 130)

This top-floor restaurant is 120m above ground level and offers a night view of the city. Enjoy a buffet that features seasonal ingredients and includes roast beef freshly prepared by chefs before your eyes.

## BANQUET HALL



Fantasy Hall

Three venues are available for different purposes and usage styles. Choose from Fantasy Hall, which can host buffet parties for up to 250 guests, the mid-size Dream Hall, and Harmony Hall, which is perfect for business meetings and small banquets.

### Facilities

Name of venue	Size (m <sup>2</sup> )	Room height (m)	Width (m)	Length (m)	Capacity (no. of people)					
					Banquet	Seated	Standing	School	Theater	Square seating arrangement
Fantasy Hall (whole)	355	4.5	24.7	14.4	200	170	250	270	400	108
Fantasy Hall (A)	205	4.5	14.2	14.4	100	80	150	150	250	72
Fantasy Hall (B)	150	4.5	10.5	14.4	60	50	100	96	150	54
Harmony Hall	60	3.4	6.3	9.6	30	30	40	36	40	36
Dream Hall (Whole)	165	3.4	17.2	9.6	80	80	100	120	170	72
Dream Hall (A)	105	3.4	10.9	9.6	50	40	60	84	100	54
Dream Hall (B)	60	3.4	6.3	9.6	30	30	40	36	30	36
Top of Universal	456	6.0			120	120				

## HOT SPRING SPA



Enjoy the luxury of a natural hot spring from 1,000m below ground level at 110m above ground. Relax in any of the facilities on offer, including a vibra-bath and a sauna.

### Prices (inc. a free drink)

Adult: ¥2,000,  
Child 3 years - elementary school: ¥1,000  
\*Additional bathing tax per adult: ¥150

## ACCESS MAP



### By train

● From Shin-Osaka Station: Approx. 20 min.  
(JR Tokaido Line) → JR Osaka Station → JR Nishikujo Station → JR Universal City Station → short walk

### By plane

● From Osaka International Airport: Approx. 45 min.  
(Airport Limousine Bus) → Universal Studios Japan Traffic Square → Approx. 10 min. on foot  
● From Kansai International Airport: 1) Approx. 80 min. 2) Approx. 70 min.  
1) (Airport Limousine Bus) → Universal Studios Japan Traffic Square → Approx. 10 min. on foot  
2) (Kansai Airport Rapid Service) → Nishikujo Station → JR Universal City Station → short walk

### By car

● Close to the Hanshin Expressway Universal City Exit

\*Hotel parking lot (158 spaces)  
\*Overnight guests: Max. 3,500 yen up to 24 hours after entry (the maximum charge is applied every 24 hours) After 24 hours, an additional fee of 200 yen applies every 20 minutes.  
(Please note that parking spaces are not guaranteed if you leave the parking lot during your stay.)  
\*Banquet guests will receive a ticket for 4 hours of free parking.  
\*Restaurant guests will receive a ticket for 2 hours of free parking if their bill is ¥3,000 or more.  
\*Parking outside the above hours is charged at ¥200 for 20 minutes.  
\*First-come-first-served (reservations not possible), height limit applies (2.1 m limit). If the hotel parking lot is full, we will let you know of other parking lots in the neighborhood.

### Nearby tourist attractions

- Universal Studios Japan (approx. 2 min. on foot)
- Universal Citywalk Osaka (short walk)
- Osaka Aquarium Kaiyukan (approx. 10 min. by boat (Capt. Line))
- Tempozan (approx. 10 min. by boat (Capt. Line))

# Hotel Keihan Kyobashi Grande

Osaka

The hotel is connected directly to the station, with an adjacent shopping mall, making it perfect for sightseeing, business, leisure, and a range of other travel.

Directly connected to Keihan Kyobashi Station, 1 min. on foot from JR Kyobashi Station

\*All photos are for illustrative purposes only.



## GUEST ROOM



Single room



Compact twin

A full range of facilities and sophisticated, modern guest rooms. Experience exceptional hospitality on the Superior Floor at the top of the hotel. Ladies' Rooms for the exclusive use of women are also available.

### No. of guest rooms: 214 (Hotel capacity: 395 people)

- Single rooms (17 m<sup>2</sup>): 190 (inc. 115 compact twin rooms)
- Twin rooms (19 - 36 m<sup>2</sup>): 22
- Function rooms (36 m<sup>2</sup>): 2

Check-in: 15:00 / Check-out: 11:00

## RESTAURANT



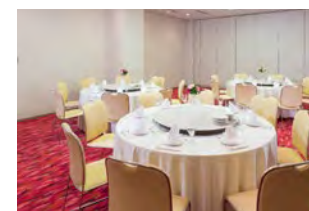
### Restaurant Lorraine (max. seating capacity: 100)

With the ambience of spring in Scandinavia, this casual restaurant offers a varied and wide ranging buffet. Eat until your heart is content at this spacious restaurant offering panoramic views over Osaka's Kyobashi area.

## BANQUET HALL



Kagayaki-no-ma



Suisho-no-ma



Crystal Room

Large, medium, and small banquet rooms are available to host exhibitions, lectures, conferences, and other events.

### Facilities

Name of venue	Size (m <sup>2</sup> )	Room height (m)	Width (m)	Length (m)	Capacity (no. of people)					
					Banquet	Seated	Standing	School	Theater	Square seating arrangement
Kagayaki-no-ma (whole)	300	4.0~5.0	11.5	26.0	144	180	250	200	350	84
Kagayaki-no-ma (east)	200	4.0~5.0	11.5	16.2	72	90	120	120	200	60
Kagayaki-no-ma (west)	100	4.0~5.0	11.5	9.2	40	50	60	60	100	42
Suisho-no-ma	72	2.9	10.3	6.5	32	50	48	48	80	36
Crystal Room	20		4.2	7.1		10				10
Function Room	36									10

## ACCESS MAP



### By train

● From Shin-Osaka Station: Approx. 15 min.  
(JR Tokaido Line) → JR Osaka Station → JR Kyobashi Station → 1 min. on foot  
\*Connected to Keihan Kyobashi Station, 3 min. on foot from Osaka Metro Kyobashi Station

### By plane

● From Osaka International Airport: Approx. 40 min. (Airport Limousine Bus) → JR Osaka Sta. → JR Kyobashi Station → 1 min. on foot  
● From Kansai International Airport: Approx. 80 min. (JR Kansai Airport Rapid Service) → JR Kyobashi Station → 1 min. on foot

### By car

● Approx. 10 min. from Hanshin Expressway [Kitahama Ramp] \*No exclusive parking at hotel. Please use the Kyobashi Mall TIMES parking lot in the Kyobashi Station Building.

### Nearby tourist attractions

- OBP (Osaka Business Park) (approx. 5 min. on foot) ● Osaka Castle (approx. 25 min. on foot) ● Osaka-Jo Hall (approx. 15 min. on foot)
- Universal Studios Japan (approx. 20 min. by train) ● Hirakata Park (approx. 30 min. by train) ● Kyocera Dome (approx. 25 min. by train)
- Nanihaya Dome (approx. 25 min. by train) ● Osaka International Convention Center (approx. 10 min. by train) ● Osaka Station (approx. 7 min. by train)
- Namba Station (approx. 15 min. by train) ● Tsutenkaku (approx. 25 min. by train) ● Kyoto Gion-shijo (approx. 50 min. by train)



# Hotel Keihan Tenmabashi

Osaka

Just 15 min. on foot from Osaka Castle.  
Conveniently located for business and sightseeing in the center of Osaka.

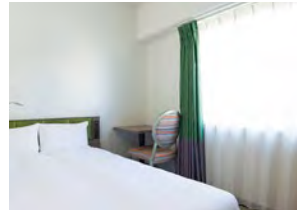
1 min. on foot from Temmabashi Station on Keihan Railway or Osaka Metro.



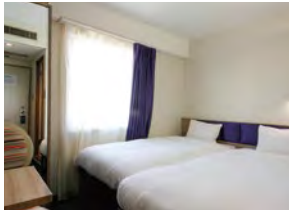
\*All photos are for illustrative purposes only.

## GUEST ROOM

Rooms are clean, secure, and comfortable.  
They are suitable for everything from business to leisure travel.



Single room



Mini twin

■ No. of guest rooms: 315  
(Hotel capacity: 611 people)

- Single rooms (12 m²):
- Semi-double rooms (12 m²): 190
- Mini twin rooms (12 m²): 62
- Casual twin rooms (17 m²):
- Triple rooms (17 m²): 21
- Standard twin rooms (24 m²): 2
- Connect rooms (24 m²): 20

Check-in: 15:00  
Check-out: 11:00

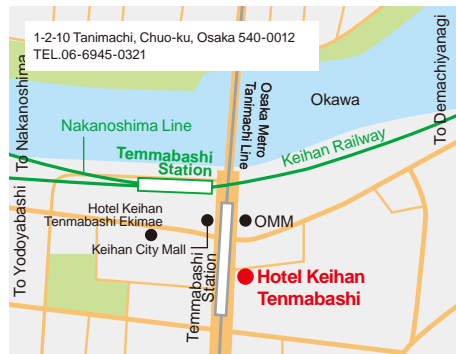
## RESTAURANT

**Madras Spice Tokyo Temmabashi Restaurant**  
(Max. seating capacity: 100)



Halal certified.  
Enjoy authentic  
Indian curry and  
freshly baked  
naan bread.

## ACCESS MAP



### ■ By train

● From Shin-Osaka Station: Approx. 20 min.

(JR Tokaido Line) → JR Osaka Station / Osaka Metro Higashi-Umeda Station → Osaka Metro Temmabashi Station → Approx. 1 min. on foot

### ■ By plane

● From Osaka International Airport: Approx. 40 min.

(Airport Limousine Bus) → JR Osaka Station / Osaka Metro Higashi-Umeda Station → Osaka Metro Temmabashi Station → Approx. 1 min. on foot

● From Kansai International Airport: Approx. 60 min.

(JR Kansai-Airport Express "Haruka") → JR Tennoji Station / Osaka Metro Tennoji Station → Osaka Metro Temmabashi Station → Approx. 1 min. on foot

### ■ By car

● Approx. 5 min. from Hanshin Expressway Hoenzaka Exit

■ Hotel parking lot (10 spaces) / 2,500 yen/night. First-come-first-served (reservations not possible). If the hotel parking lot is full, we will let you know of other parking lots in the neighborhood.

### ■ Nearby tourist attractions

- Osaka Castle Museum (approx. 20 min. on foot)
- Osaka Aqua Bus pier (approx. 3 min. on foot)
- Osaka Prefectural Government (approx. 5 min. on foot)
- Japan Mint (approx. 15 min. on foot)
- Dawn Center (approx. 5 min. on foot)
- OMM building (approx. 2 min. on foot)
- Universal Studios Japan (approx. 30 min. by train)
- Hiraoka Park (approx. 30 min. by train)
- Central Public Hall (approx. 3 min. by train)
- The National Museum of Art, Osaka (approx. 7 min. by train)
- Osaka International Convention Center (approx. 7 min. by train)
- Higashi-Umeda Station (approx. 5 min. by train)
- Namba Station (approx. 12 min. by train)

# Hotel Keihan Tenmabashi Ekimae

Osaka

1 min. on foot from Temmabashi Station on Keihan Railway or Osaka Metro.  
New in 2025: New guest rooms for up to four guests. Great for families and groups.

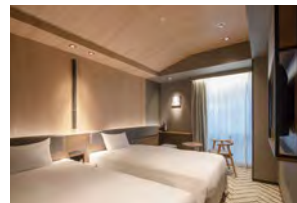
1 min. on foot from Temmabashi Station on Keihan Railway or Osaka Metro.



\*All photos are for illustrative purposes only.

## GUEST ROOM

Cozy guest rooms with the concept of a modern Japanese inn.



Twin rooms



Double rooms

■ No. of guest rooms: 298  
(Hotel capacity: 559 people)

- Double rooms (16 m²): 141
- Twin rooms (21 m²): 105
- Superior twin rooms (21 m²): 28
- Universal twin rooms (32 m²): 1
- Top floor airweave double rooms (16 m²): 10
- Top floor airweave twin rooms (16 m²): 9
- Name TBC 2 - 4 guest rooms (32 m²): 2
- Name TBC 2 - 4 guest rooms (48 m²): 2

## RESTAURANT

**Japanese Cafe & Dining Bar Aoi**



Available  
throughout the day  
from breakfast to  
lunch, cafe time,  
and dinner. Food  
that is kind to  
customers and the  
planet.

## ACCESS MAP



### ■ By train

● From Shin-Osaka Station: Approx. 20 min.

(JR Tokaido Line) → JR Osaka Station / Osaka Metro Higashi-Umeda Station → Osaka Metro Temmabashi Station → Approx. 1 min. on foot

### ■ By plane

● From Osaka International Airport: Approx. 40 min.

(Airport Limousine Bus) → JR Osaka Station / Osaka Metro Higashi-Umeda Station → Osaka Metro Temmabashi Station → Approx. 1 min. on foot

● From Kansai International Airport: Approx. 60 min.

(JR Kansai-Airport Express "Haruka") → JR Tennoji Station / Osaka Metro Tennoji Station → Osaka Metro Temmabashi Station → Approx. 1 min. on foot

### ■ By car

● Approx. 5 min. from Hanshin Expressway Hoenzaka Exit

### ■ Nearby tourist attractions

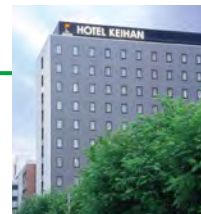
- Osaka Castle Museum (approx. 20 min. on foot)
- Osaka Aqua Bus pier (approx. 3 min. on foot)
- Osaka Prefectural Government (approx. 5 min. on foot)
- Japan Mint (approx. 15 min. on foot)
- Dawn Center (approx. 5 min. on foot)
- OMM building (approx. 2 min. on foot)
- Universal Studios Japan (approx. 30 min. by train)
- Hiraoka Park (approx. 30 min. by train)
- Central Public Hall (approx. 3 min. by train)
- The National Museum of Art, Osaka (approx. 7 min. by train)
- Osaka International Convention Center (approx. 7 min. by train)
- Higashi-Umeda Station (approx. 5 min. by train)
- Namba Station (approx. 12 min. by train)

# Hotel Keihan Yodoyabashi

Osaka

With a great location offering direct train access to Shin-Osaka, Namba,  
and central Kyoto, this hotel offers a fulfilling stay that suits guests' needs.

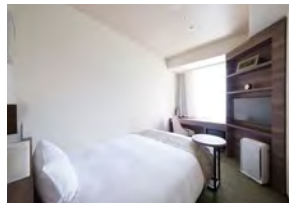
5 min. on foot from Yodoyabashi Station and 2 min. on foot from Kitahama Station on the Keihan Railway and Osaka Metro.



\*All photos are for illustrative purposes only.

## GUEST ROOM

Rooms on the Premium Floor at the top of the hotel feature airweave mattresses.



Single room



Twin room

■ No. of guest rooms: 210  
(Hotel capacity: 498 people)

- Single (14 m²): 90
- Twin (20 m²): 78
- Double/studio twin (18 m²): 42

Check-in: 15:00  
Check-out: 11:00

## ACCESS MAP



### ■ By train

● From Shin-Osaka Station: Approx. 15 min.

Osaka Metro Shin-Osaka Station → Osaka Metro Yodoyabashi Station → Approx. 5 min. on foot

### ■ By plane

● From Osaka International Airport: Approx. 50 min.

(Airport Limousine Bus) → JR Osaka Station / Osaka Metro Umeda Station → Osaka Metro Yodoyabashi Station → Approx. 5 min. on foot

● From Kansai International Airport: 1) Approx. 85 min. 2) Approx. 75 min.

1) (Airport Limousine Bus) → JR Osaka Station / Osaka Metro Umeda Station → Osaka Metro Yodoyabashi Station → Approx. 5 min. on foot

2) (Nankai Airport Line) → Nankai Tengachaya Station / Osaka Metro Tengachaya Station → Osaka Metro Kitahama Station → Approx. 2 min. on foot

### ■ By car

● Approx. 5 min. from Hanshin Expressway Hommachi Exit

- Hotel parking lot (4 spaces)

\*Overnight guests: ¥2,000 per night (from 15:00 on date of stay to 11:00 the following day), first-come-first-served (reservations not possible), height limit applies (2.0 m limit).

# Hotel Keihan Namba Grande

Osaka

The interior of this hotel has a garden-themed design concept.  
Guests can enjoy concept rooms that offer a kitchen area and washing  
machine for long-term stays, bunk bedrooms, and a dedicated lounge on the  
Club Floor at the very top of the hotel.

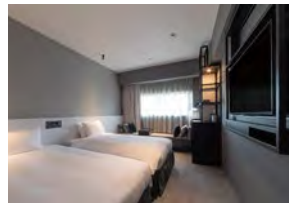
About 10 min. on foot from Nankai Railway and Osaka Metro Namba Station.



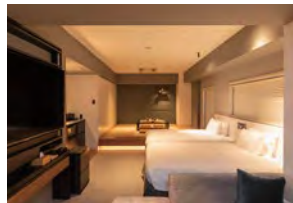
\*All photos are for illustrative purposes only.

## GUEST ROOM

All rooms feature a separate bathroom and toilet. The Club Floor at the very top offers an exquisite hotel  
experience with a range of quality amenities.



Twin room



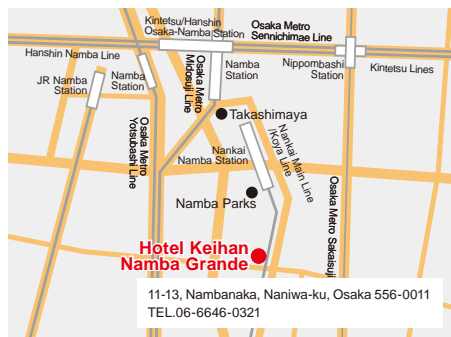
Twin room + Japanese-style room

■ No. of guest rooms: 227  
(Hotel capacity: 645 people)

- Double rooms (16.9 m²): 49
- Twin rooms (20 m²): 160
- \* Out of the 160 rooms, 12 of the rooms can be connected to form 6 pairs of rooms.
- Universal rooms (20 m²): 3
- Twin rooms with a Japanese-style raised-floor seating area (42 m²): 2
- Family rooms (44 m²): 4
- Bunkbed rooms (44 m²): 2
- Hollywood twin rooms (30 m²): 4
- King bed rooms (30 m²): 3

Check-in: 15:00  
Check-out: 11:00

## ACCESS MAP



### ■ By train

● From Shin-Osaka Station: Approx. 25 min.

Osaka Metro Shin-Osaka Station → Osaka Metro Namba Station → Approx. 10 min. on foot

### ■ By plane

● From Osaka International Airport: Approx. 60 min.

(Airport Limousine Bus) → JR Osaka Station / Osaka Metro Umeda Station → Osaka Metro Namba Station → Approx. 10 min. on foot

● From Kansai International Airport: 1) Approx. 95 min. 2) Approx. 45 min.

1) (Airport Limousine Bus) → JR Osaka Station / Osaka Metro Umeda Station → Osaka Metro Namba Station → Approx. 10 min. on foot

2) (Nankai Railway Nankai Airport Limited Express Rapi:t) → Namba Station → approx. 6 min. on foot

### ■ By car

● Approx. 2 min. from Hanshin Expressway Nanba Exit

\* No exclusive parking at hotel. We will let you know of our affiliated parking lots. (Ordinary motor vehicles only)

For details of nearby banquet venues and conference rooms, see OMM on page 43.



# The Thousand Kyoto

Kyoto

Approx. 2 minutes on foot from JR Kyoto Station.  
A space full of the hospitality of Kyoto,  
the Thousand Year Capital.

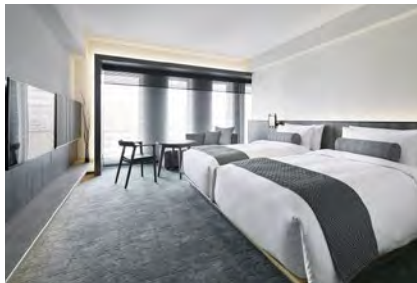
A hotel aiming to offer sustainable comfort into the next millennium.  
An experience of comfort for people, society, and the future.



## GUEST ROOM



Harmony suite double



Superior twin room

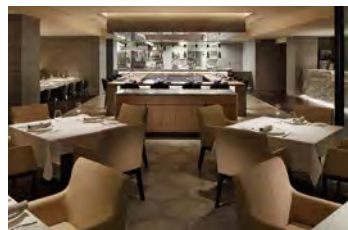
Guest rooms incorporate the beauty of subtraction found in Zen and the tea ceremony, and the wisdom from Kyoto machiya houses that harmonize nature and functional beauty. A range of suites and premier rooms are available, including rooms overlooking the garden and rooms with both Japanese and Western-style areas.

■ No. of guest rooms: 222 (Hotel capacity: 473 people)

- Superior rooms (36 – 37 m<sup>2</sup>): 180
- Deluxe rooms (42 m<sup>2</sup>): 19
- Premium rooms (40 – 45 m<sup>2</sup>): 12
- Suite rooms (54 – 85 m<sup>2</sup>): 11

Check-in: 15:00 / Check-out: 12:00

## RESTAURANT



**Scalae**  
(Max. seating capacity: 110)

With the sounds and smells of a lively open kitchen, this Italian restaurant brings maximum flavor out of the ingredients used. Also available are connectable private rooms for your use.



**Kizahashi**  
(Max. seating capacity: 60)

Enjoy seasonal Japanese cuisine with a delicate touch that uses seasonal ingredients from Kyoto and other areas of Japan. The 3 private rooms provide comfort and are filled with sophistication and warmth. This restaurant is suitable for a range of occasions.

## BANQUET HALL



Sen



Kacho



Salon Minami

The banquet halls can be used for a wide range of occasions, including grand ceremonies, receptions, exhibitions, conferences, and seminars. There are also small banquet rooms that can accommodate meals and meetings for smaller groups.

### Facilities

Name of venue	Size (m <sup>2</sup> )	Room height (m)	Width (m)	Length (m)	Max. capacity (no. of people)					
					Round tables	Buffet	School	Theater	U-shaped seating arrangement	Square seating arrangement
Sen	230	3.6	21.1	10.9	150	160	150	320	60	78
Kacho	387	3.5	24.2	16.0	280	300	280	480	75	96
Fugetsu	108	2.4	14.4	7.5	60	60	50	120	40	48
Yuzuha	44	2.2	6.7	6.6	30	30	24	50	18	24

Name of venue	Size (m <sup>2</sup> )	Room height (m)	Width (m)	Length (m)	Max. capacity (no. of people)					
					Round tables	Buffet	School	Theater	U-shaped seating arrangement	Square seating arrangement
Oribe	46	2.2	7.0	6.6	30	30	24	50	18	24
Moegi	36	2.2	6.4	5.7	20	20	18	30	15	20
Wakakusa	36	2.2	6.4	5.7	20	20	18	30	15	20
Tsudoi	48	2.2	6.0	8.0	30	30	24	40	18	24
Salon Minami	27	2.5	4.1	6.6	Boardroom style 10					

## ACCESS MAP



### By train

● Approx. 2 min. on foot from JR Kyoto Station Central Exit

### By plane

● From Osaka International Airport: Approx. 50 min. (Airport Limousine Bus) → JR Kyoto Sta. Hachijoguchi Exit → Approx. 5 min. on foot

● From Kansai International Airport: 1) Approx. 85 min. 2) Approx. 75 min.

1) (Airport Limousine Bus) → Kyoto Sta. Hachijoguchi Exit → Approx. 5 min. on foot

2) (JR Kansai-Airport Express "Haruka") → JR Kyoto Station → Approx. 2 min. on foot

### By car

● Approx. 20 min. from Kyoto-minami Interchange on the Meishin Expressway

- Hotel parking lot (approx. 50 spaces) \*Large bus drop off and pick up (1 space)

\*Overnight guests: ¥2,000 per night (inc. tax) 15:00 - 12:00 following day Parking will be discounted for customers using the restaurant.

First-come-first-served (reservations not possible), height limit applies (2.2 m limit).

### Nearby tourist attractions

● Nidec Kyoto Tower (approx. 5 min. on foot) ● Higashi Hongan-ji Temple (approx. 15 min. on foot) ● Nishi Hongan-ji Temple (approx. 20 min. on foot)

● To-ji Temple (approx. 20 min. on foot)

● Sanjusangen-do Temple (approx. 5 min. by bus) ● Kyoto National Museum (approx. 5 min. by bus) ● Tofuku-ji Temple (approx. 2 min. by train or 5 min. on foot)

# Kyoto Century Hotel

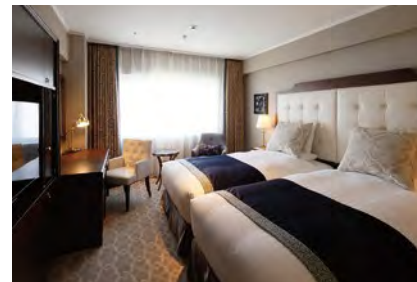
Kyoto

2 minutes on foot from JR Kyoto Station.  
This hotel is based on the theme of a nostalgic journey.

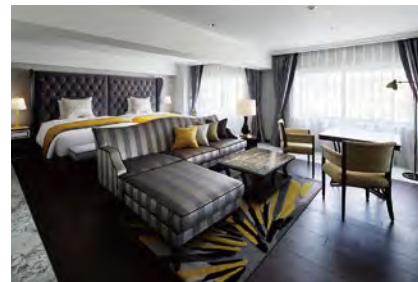
Guests can enjoy a unique experience enveloped in warmth and kindness.



## GUEST ROOM



Grand Comfort Superior Twin Room



Modern Suite

With an emphasis on "BIOSTYLE", this hotel offers high quality amenities, guest rooms, and beds while taking sustainability into consideration. A total of 218 rooms offering the same level of comfort and relaxation in any and all situations.

■ No. of guest rooms: 218 (Hotel capacity: 431 people)

- Twin rooms (20 - 30 m<sup>2</sup>): 167
- Double rooms (18 - 30 m<sup>2</sup>): 45
- Family rooms (54 m<sup>2</sup>): 1
- Suite rooms (48 - 79 m<sup>2</sup>): 5

Check-in: 15:00 / Check-out: 12:00

## RESTAURANT

La Jyho All Day Dining (max. seating capacity: 99)



All day dining offers guests the chance to enjoy a diverse buffet in the morning, afternoon, and evening. The stylish and spacious interior has won a range of awards.

Essex Main Bar (max. seating capacity: 52)



A modern interpretation of the formal bar style offers a laid back atmosphere in which to enjoy wonderful drinks. The signature "Century Night" cocktail comes highly recommended.

## ACCESS MAP



### By train

● Approx. 2 min. on foot from JR Kyoto Station Central Exit

### By plane

● From Osaka International Airport: Approx. 50 min. (Airport Limousine Bus) → JR Kyoto Sta. Hachijoguchi Exit → Approx. 5 min. on foot

● From Kansai International Airport: 1) Approx. 85 min. 2) Approx. 75 min.

1) (Airport Limousine Bus) → Kyoto Sta. Hachijoguchi Exit → Approx. 5 min. on foot

2) (JR Kansai-Airport Express "Haruka") → JR Kyoto Station → Approx. 2 min. on foot

### By car

● Approx. 20 min. from Kyoto-minami Interchange on the Meishin Expressway

- Hotel parking lot (approx. 50 spaces)

\*Overnight guests: ¥2,000 per night (inc. tax) 15:00 - 12:00 following day Parking will be discounted for customers using the restaurant.

First-come-first-served (reservations not possible), height limit applies (2.2 m limit).

### Nearby tourist attractions

● Nidec Kyoto Tower (approx. 5 min. on foot) ● Higashi Hongan-ji Temple (approx. 15 min. on foot) ● Nishi Hongan-ji Temple (approx. 20 min. on foot)

● To-ji Temple (approx. 20 min. on foot)

● Sanjusangen-do Temple (approx. 5 min. by bus) ● Kyoto National Museum (approx. 5 min. by bus) ● Tofuku-ji Temple (approx. 2 min. by train or 5 min. on foot)

\*All photos are for illustrative purposes only.



# Kyoto Tower Hotel

Kyoto

Nidec Kyoto Tower is a landmark located immediately to the north of Kyoto Station, the main point of entry to Kyoto.

Directly connected by underground passage to JR lines and the subway, making it a perfect starting point from which to explore Kyoto. The hotel can be used for a variety of purposes according to guests' needs, including sightseeing and business.



\*All photos are for illustrative purposes only.

## GUEST ROOM

Kyoto Tower Hotel is at the bottom of a beautiful white tower just to the north of Kyoto Station. The hotel boasts rooms for everything from business trips to families.



Single room



Double room



Large twin room

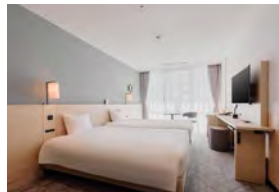


Japanese/Western-style room

■ No. of guest rooms: 161  
(Hotel capacity: 401 people)

- Single rooms (from 13 m<sup>2</sup>): 36
- Double rooms (from 15 m<sup>2</sup>): 30
- Twin rooms (from 19 m<sup>2</sup>): 90
- Family rooms (45 m<sup>2</sup>): 2
- Japanese/Western-style rooms (50 m<sup>2</sup>): 3

Check-in: 15:00  
Check-out: 11:00



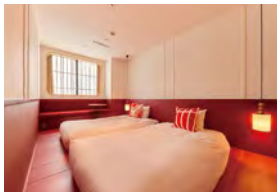
Deluxe twin room



Deluxe family room



Double - Kyoto Tower Concept -



Standard twin - Kyoto Tower Concept

## RESTAURANT



Restaurant Tower Terrace  
(Max. seating capacity: 108)

Asian specialties combined with Kyoto-style Japanese cuisine. Visitors can also enjoy a Gion Tsujiri tea bar and sweet dishes made with matcha green tea.



Sky Lounge "KUU"  
(Max. seating capacity: 54)

An interior unified through chic lighting creates an ambiance of sophistication in the Sky Lounge. With two types of counter seats, seats for couples, box seats, and table seats, it is perfect for use in any situation.

## ACCESS MAP



■ By train  
● Approx. 2 min. on foot from JR Kyoto Station Central Exit

■ By plane

● From Osaka International Airport: Approx. 65 min.

● From Kansai International Airport: 1) Approx. 80 min. 2) Approx. 90 min.

(Airport Limousine Bus) → JR Kyoto Sta. Hachijoguchi Exit → Approx. 10 min. on foot  
1) (JR Kansai-Airport Express "Haruka") → JR Kyoto Station → Approx. 2 min. on foot  
2) (Airport Limousine Bus) → Kyoto Sta. Hachijoguchi Exit → Approx. 10 min. on foot

■ By car

● Approx. 20 min. from Kyoto-minami or Kyoto-higashi Interchange on the Meishin Expressway \*No exclusive parking at hotel.

■ Nearby tourist attractions

● Higashi Hongan-ji Temple (approx. 5 min. on foot) ● Nishi Hongan-ji Temple (approx. 15 min. on foot) ● Sanjusangen-do Temple (approx. 5 min. by bus)  
● Kyoto National Museum (approx. 5 min. by bus) ● To-ji Temple (approx. 2 min. by train or 5 min. on foot)

# Kyoto Tower Hotel Annex

Kyoto

A friendly home that focuses on warm hospitality

This hotel is located in a quiet area just off the main street in front of Kyoto Station. Our warm-hearted service and at-home atmosphere help guests relax and unwind after a tiring journey.



\*All photos are for illustrative purposes only.

## GUEST ROOM

The hotel's contemporary guest rooms inspired by cherry blossoms, ginkgo trees, and autumn leaves from Kyoto's seasonal scenery have been greatly improved to increase comfort and functionality in order to relieve fatigue and ensure a pleasant stay for guests.



Hollywood twin room



Standard twin room

■ No. of guest rooms: 126  
(Hotel capacity: 308 people)

- Double rooms (15 m<sup>2</sup>): 15
- Hollywood twin rooms (15 m<sup>2</sup>): 19
- Standard twin rooms (16 m<sup>2</sup>): 36
- Standard twin rooms (for 3 guests) (16 m<sup>2</sup>): 56

Check-in: 15:00  
Check-out: 11:00

## REGINA CO-WORKING AREA

■ Opening hours 10:30 - 20:00 (open on weekends and holidays)  
Dedicated co-working area Wi-Fi available

Low usage fee from ¥600 for 1 hour.



## ACCESS MAP



■ By train

● Approx. 3 min. on foot from JR Kyoto Station Central Exit

■ By plane

● From Osaka International Airport: Approx. 65 min.

(Airport Limousine Bus) → JR Kyoto Sta. Hachijoguchi Exit → Approx. 10 min. on foot

● From Kansai International Airport: 1) Approx. 80 min. 2) Approx. 90 min.

1) (JR Kansai-Airport Express "Haruka") → JR Kyoto Station → Approx. 3 min. on foot  
2) (Airport Limousine Bus) → Kyoto Sta. Hachijoguchi Exit → Approx. 10 min. on foot

■ By car

● Approx. 20 min. from Kyoto-minami or Kyoto-higashi Interchange on the Meishin Expressway \*No exclusive parking at hotel.

■ Nearby tourist attractions

● Higashi Hongan-ji Temple (approx. 10 min. on foot) ● Nishi Hongan-ji Temple (approx. 15 min. on foot) ● Sanjusangen-do Temple (approx. 5 min. by bus)  
● Kyoto National Museum (approx. 5 min. by bus) ● To-ji Temple (approx. 2 min. by train or 5 min. on foot)



# Hotel Keihan Kyoto Grande

Kyoto

With Toji and Higashi Honganji temples within walking distance, this is the perfect base for sightseeing in Kyoto. Getting to and from the airport is also easy from the bus stop in front of the hotel. The Superior Floor on the 13th floor boasts an exclusive lounge with views of Higashiyama and the city of Kyoto.

1 minute on foot from JR Kyoto Station Hachijoguchi Exit Underground walkway offers easy direct access even on rainy days



\*All photos are for illustrative purposes only.

## GUEST ROOM

This hotel offers a wide range of rooms suitable for any type of travel, including everything from single rooms perfect for business travelers to junior suite rooms with baths boasting a spectacular view.



Twin room example



Superior view bath junior suite room

### ■ No. of guest rooms: 320 (Hotel capacity: 741 people)

- Single rooms (15 m<sup>2</sup>): 84
- Twin rooms (23 m<sup>2</sup>): 182
- Double rooms (19 m<sup>2</sup>): 23
- Family rooms (38 m<sup>2</sup>): 3
- Superior twin rooms (25 m<sup>2</sup>): 22
- Superior king double rooms with airweave (25 m<sup>2</sup>): 1
- Superior deluxe twin rooms (36 m<sup>2</sup>): 1
- Superior junior suite rooms (42 m<sup>2</sup>): 1
- Superior view bath junior suite rooms (50 m<sup>2</sup>): 1
- Garden Junior Suite Zen rooms (50 m<sup>2</sup>): 2

Check-in: 15:00 / Check-out: 11:00

## RESTAURANT



### Octavar Mediterranean Cuisine / Wine & Beer Bar (max. seating capacity: 150)

The restaurant offers a range of Mediterranean cuisine including freshly baked pizza and pasta from a stone oven, and a comprehensive drinks menu that includes everything from 9 varieties of rigorously selected draft beers, wines, whiskeys, and cocktails to alcohol-free beverages.

## BANQUET HALL



Korin (seated layout)



Korin (school layout)



Fuji



Octavar Party Room

The banquet halls can accommodate all needs for meetings, interviews, seminars, training, and other uses. The restaurant also boasts bright and spacious Mediterranean-themed private rooms.

### ■ Facilities

Name of venue	Size (m <sup>2</sup> )	Room height (m)	Width (m)	Length (m)	Capacity (no. of people)					
					Banquet	Seated	Standing	School	Theater	Square seating arrangement
Korin	200	2.6	10.0	20.0	96	120	130	117	160	60
Fuji	40	2.2	8.0	5.0						16
Party Room	50				16	32	40			

## ACCESS MAP



### ■ By train

◎ Approx. 1 min. on foot from JR Kyoto Sta. Hachijoguchi Exit

### ■ By plane

◎ From Osaka International Airport: Approx. 55 min.

(Airport Limousine Bus) → JR Kyoto Sta. Hachijoguchi Exit → Approx. 2 min. on foot

◎ From Kansai International Airport: 1) Approx. 85 min. 2) Approx. 80 min.

1) (Airport Limousine Bus) → JR Kyoto Sta. Hachijoguchi Exit → Approx. 1 min. on foot

2) (JR Kansai-Airport Express "Haruka") → JR Kyoto Station → Approx. 2 min. on foot

### ■ By car

◎ Approx. 15 min. from Kyoto-minami Interchange on the Meishin Expressway

- Please park in the Kyoto municipal Hachijoguchi parking lot (fees apply) on basement levels 2 and 3 in the adjacent Avanti building.

### ■ Nearby tourist attractions

- ◎ Kyoto Aquarium (approx. 10 min. by bus) ◎ Kyoto Tower (approx. 5 min. on foot) ◎ Higashi Hongan-ji Temple (approx. 15 min. on foot)
- ◎ Nishi Hongan-ji Temple (approx. 20 min. on foot) ◎ To-ji Temple (approx. 10 min. on foot) ◎ Sanjusangen-do Temple (approx. 5 min. by bus)
- ◎ Kyoto National Museum (approx. 5 min. by bus) ◎ Tofuku-ji Temple (approx. 15 min. on foot)

# Hotel Keihan Kyoto Hachijoguchi

Kyoto

A convenient base for sightseeing in Kyoto. With a range of facilities including a large communal bath, a laundry area, mirroring function, and more, this hotel comes highly recommended for long stays.

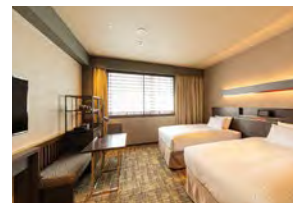
5 min. on foot from JR Kyoto Station Hachijoguchi Exit 3 min. on foot from municipal subway Kujo Station



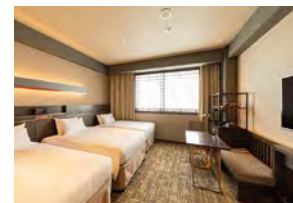
\*All photos are for illustrative purposes only.

## GUEST ROOM

Four types of rooms for offer quality and comfort.



Moderate twin room



Moderate triple room

### ■ No. of guest rooms: 234 (Hotel capacity: 573 people)

- Single rooms (14 m<sup>2</sup>): 15
- Double rooms (17 m<sup>2</sup>): 9
- Twin rooms (17 m<sup>2</sup>): 88
- Triple rooms (21 m<sup>2</sup>): 19
- Moderate twin rooms (22 m<sup>2</sup>): 17
- Moderate triple rooms (22 m<sup>2</sup>): 86

Check-in: 15:00

Check-out: 11:00

## RESTAURANT

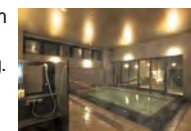
### Restaurant (max. seating capacity: 97)

In addition to fresh vegetables, on offer is a variety of carefully crafted vegetable dishes that combine fermented foods like vinegar and rice malt, along with a selection of colorful salad toppings. Creating your own open-faced sandwich by topping crispy toasted bread with fresh salad and your favorite ingredients comes highly recommended.

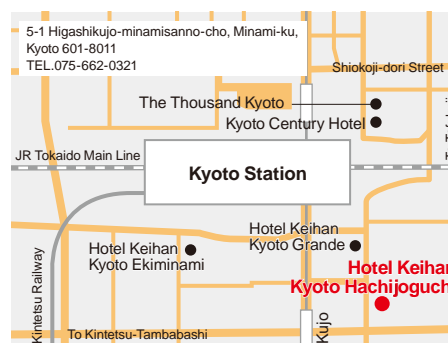


## HOTSPRING

Security with an electronic lock system that uses card-key offers peace of mind. Enjoy free ice candy after bathing.



## ACCESS MAP



### ■ From Kyoto Station

◎ 5 min. on foot from JR Kyoto Station Hachijo East Exit  
3 min. on foot from municipal subway Kujo Station Exit No. 1

### ■ From airport

◎ From Osaka International Airport: Approx. 60 min.

Osaka International Airport → (Airport Limousine Bus) → JR Kyoto Station → Approx. 5 min. on foot

◎ From Kansai International Airport: 1) Approx. 95 min. 2) Approx. 85 min.

1) Kansai International Airport → (Airport Limousine Bus) → JR Kyoto Station → Approx. 5 min. on foot

2) Kansai International Airport → (JR Kansai-Airport Express "Haruka") → JR Kyoto Station → Approx. 5 min. on foot

### ■ By car

◎ Approx. 10 mins' drive from Kamitoba Interchange on the Hanshin Expressway

\*2,000 yen per guest per night, from 15:00 to 11:00 the next day (reservation required)

■ Parking lot for large buses (5 spaces)

### ■ Nearby tourist attractions

- ◎ Kyoto Aquarium (approx. 10 min. by bus) ◎ Kyoto Tower (approx. 10 min. on foot) ◎ Higashi Hongan-ji Temple (approx. 15 min. on foot)
- ◎ Nishi Hongan-ji Temple (approx. 20 min. on foot) ◎ To-ji Temple (approx. 10 min. on foot) ◎ Sanjusangen-do Temple (approx. 5 min. by bus)
- ◎ Kyoto National Museum (approx. 5 min. by bus) ◎ Tofuku-ji Temple (approx. 15 min. on foot)

# Hotel Keihan Kyoto Ekiminami

Kyoto

A specialized lodging hotel with cutting-edge functionality. Enjoy sightseeing in Kyoto free of baggage with the hotel's pre-check in and post-check out luggage storage service.

Great location, 1 minute on foot from JR Kyoto Station Hachijoguchi Exit

\*All photos are for illustrative purposes only.

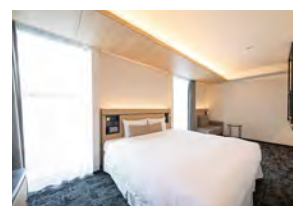


## GUEST ROOM

A comfortable space that is compact yet functional.



Twin room



Double room

### ■ No. of guest rooms: 200 (Hotel capacity: 464 people)

- Single rooms (13 m<sup>2</sup>): 24
- Double rooms (17 m<sup>2</sup>): 23
- Moderate double rooms (22 m<sup>2</sup>): 8
- Twin rooms (16 - 20 m<sup>2</sup>): 49
- Triple rooms (20 m<sup>2</sup>): 88
- Moderate twin rooms (28 m<sup>2</sup>): 8

Check-in: 15:00

Check-out: 11:00

## RESTAURANT

### Breakfast restaurant (max. seating capacity: 65)

Enjoy a customizable breakfast with sandwiches made to suit your preferences using your choice of bread and fillings, or French toast topped with your favorite sauces and creams.



## ACCESS MAP



### ■ By train

◎ Approx. 1 min. on foot from JR Kyoto Sta. Hachijoguchi Exit

### ■ By plane

◎ From Osaka International Airport: Approx. 50 min.

(Airport Limousine Bus) → JR Kyoto Sta. Hachijoguchi Exit → Approx. 1 min. on foot

◎ From Kansai International Airport: 1) Approx. 90 min. 2) Approx. 70 min.

1) (Airport Limousine Bus) → JR Kyoto Station → Approx. 5 min. on foot

2) (JR Kansai-Airport Express "Haruka") → JR Kyoto Station → Approx. 5 min. on foot

### ■ By car

◎ Approx. 10 min. from Kamitoba Interchange on the Hanshin Expressway

- Please park in the Kyoto municipal Hachijoguchi parking lot (fees apply) on basement levels 2 and 3 in the Avanti building.

### ■ Nearby tourist attractions

- ◎ Kyoto Aquarium (approx. 10 min. by bus) ◎ Kyoto Tower (approx. 5 min. on foot) ◎ Higashi Hongan-ji Temple (approx. 15 min. on foot)
- ◎ Nishi Hongan-ji Temple (approx. 20 min. on foot) ◎ To-ji Temple (approx. 10 min. on foot) ◎ Sanjusangen-do Temple (approx. 5 min. by bus)
- ◎ Kyoto National Museum (approx. 5 min. by bus) ◎ Tofuku-ji Temple (approx. 15 min. on foot)



# L'Hôtel de Hiei

Kyoto

## Hieizan Enryaku-ji Temple / Hieizan Enryaku-ji Temple

A casual resort hotel where guests can relax and unwind away from the hustle and bustle of daily life. A mountain terrace at an altitude of approximately 600 meters offers a breathtaking panoramic view of Lake Biwa.

20 by free regular shuttle bus from Otsukyo Station on the JR Kosei Line



\*All photos are for illustrative purposes only.

## GUEST ROOM

There are 4 types of guest rooms and 29 rooms in all. Each has a different style of furniture. One suite only is a maisonette with 4 beds. The pet room has a woodchip garden.



Suite



Standard twin room

■ No. of guest rooms: 29  
(Hotel capacity: 72 people)

- Standard twin rooms (32 m²): 25
- Semi-suite rooms (64 m²): 2
- Suite rooms (128 m²): 1
- Pet rooms (32 m²): 1

Check-in: 15:00  
Check-out: 12:00

## ACCESS MAP



### ■ By train

● From Kyoto Station: Approx. 60 min. Keihan Bus / Kyoto Bus: Alight at "L'Hôtel de Hiei" \* Free hotel shuttle bus also available.

### ■ By plane

● From Osaka International Airport / Required time: Approx. 115 min.

(Airport Limousine Bus) → JR Kyoto Station → (Free hotel shuttle bus) → L'Hôtel de Hiei

● From Kansai International Airport: 1) Approx. 145 min. 2) approx. 135 min.

1) (Airport Limousine Bus) → JR Kyoto Station → (Free hotel shuttle bus) → L'Hôtel de Hiei

2) (JR Kansai-Airport Express "Haruka") → JR Kyoto Station → (Free hotel shuttle bus) → L'Hôtel de Hiei

### ■ By car

● Via Nishi-Otsu bypass from Kyoto-higashi Interchange on the Meishin Expressway: Approx. 20 min.

- Hotel parking lot (80 spaces avail.) \* Free of charge, first-come-first-served (reservations not permitted)

### ■ Nearby tourist attractions

● Hieizan Enryaku-ji Temple (Approx. 10 min. by car) ● Garden Museum Hiei (Approx. 20 min. by car)

# Good Nature Hotel Kyoto

(Good Nature Station 4~9F)

Kyoto

## A lifestyle hotel that is kind to both people and the environment.

This is a cutting-edge sustainable hotel that was the first in the world to simultaneously acquire WELL certification (v1) for giving consideration to emotional and physical health, and LEED certification for giving consideration to the global environment. The hotel welcomes guests with natural wood-toned rooms, a courtyard where guests are surrounded with large walls of green, and other nature-filled spaces, and it also offers services including a breakfast with plenty of fresh vegetables and an abundance of wellness programs.



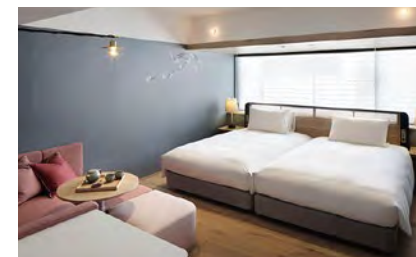
\*All photos are for illustrative purposes only.

## GUEST ROOM

Spacious guest rooms ranging from 28 to 90m² provide a comfortable stay for multiple guests. Guests can also enjoy special bath amenities and welcome sweets.



The Good Nature Suite



Superior twin room

■ No. of guest rooms: 141 (hotel capacity: 341 people)

- Superior twin rooms (28 - 35 m²): 75
- Deluxe twin rooms (35 - 48 m²): 8
- Deluxe corner rooms (42 - 49 m²): 10
- Garden view terrace twin rooms (33 - 36 m²): 20
- Deluxe terrace twin rooms (45 m²): 2
- Deluxe grand twin rooms (52 m²): 15
- Kawaramachi terrace suite rooms (53 m²): 5
- Higashiyama terrace suite rooms (68 m²): 5
- The Good Nature Suite (90 m²): 1

Check-in: 15:00 / Check-out: 11:00

## LOUNGE

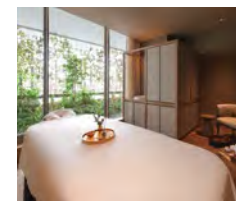
This lounge area is available for use by guests staying in specific types of guest rooms. In addition to light dishes and drinks, alcoholic beverages are also provided during cocktail time.



Lounge

## SPA

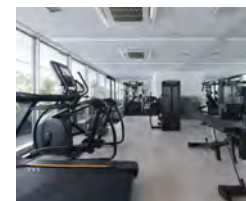
The spa offers guests a moment to take a deep breath alongside nature, starting with treatment courses using NEMOHAMO cosmetics.



Spa

## GYM

Keep building the fitness needed for a healthy daily life during your hotel stay.



Gym

## Market and other attractions.

This hotel offers the kind of rich shopping experience you would expect of a hotel located in the GOOD NATURE STATION integrated commercial facility. MARKET, located on the 1st floor, also offers a takeout menu that lets customers enjoy hamburgers and fresh vegetables with a theme of fermentation.



Hyssop (casual restaurant)



ERUTAN (restaurant/bar)



Velrosier (Chinese gastronomy)



Takayama (creative dining)



Market Kitchen (fresh food, processed food, and wine)



RAU Patisserie & Chocolate (cafe)



NEMOHAMO (cosmetics)



KASOKEKI (crafts)

## ACCESS MAP



### ■ By train

● From Kyoto Station: 1) Approx. 15 min. 2) Approx. 30 min.

1) (Kyoto Subway Karasuma Line) → Subway Shijo Station → Hankyu Kyoto-kawaramachi Station → Approx. 2 min. on foot

2) (JR Nara Line) → JR Tofukuji Station → Tofukuji Station → Gion-shijo Station → Approx. 5 min. on foot

### ■ By plane

● From Osaka International Airport: Approx. 50 min.

(Airport Limousine Bus) → JR Kyoto Sta. Hachijoguchi Exit → Subway Kyoto Station → Subway Shijo Station → Hankyu Kyoto-kawaramachi Station → Approx. 2 min. on foot

● From Kansai International Airport: 1) Approx. 85 min. 2) Approx. 75 min.

1) (Airport Limousine Bus) → JR Kyoto Sta. Hachijoguchi Exit → Subway Kyoto Station → Subway Shijo Station → Hankyu Kyoto-kawaramachi Station → Approx. 2 min. on foot

2) (JR Kansai-Airport Express "Haruka") → JR Kyoto Station → Subway Kyoto Station → Subway Shijo Station → Hankyu Kyoto-kawaramachi Station → Approx. 2 min. on foot

### ■ By car

● Approx. 30 min. from Kyoto-minami Interchange or Kyoto-higashi Interchange on the Meishin Expressway

- GOOD NATURE STATION parking lot available for use. \* Opening hours: 6:30 - 23:30.



# Biwako Hotel

Shiga

Approx. 15 min. from Kyoto by JR train. A resort hotel where the concept is “Resort & Relax” that has the magnificent Lake Biwa spreading out before your eyes.

All guest rooms have a lake view and are functional while also being refined and spacious. The hotel boasts ample facilities including restaurants and large natural hot spring baths.



\*All photos are for illustrative purposes only.

## GUEST ROOM



Premier luxury floor Aqua



Deluxe floor Lumina

There are a total of 175 guest rooms, and all have lake views. Peace and quiet await you in this location blessed with the huge lake and abundant greenery. Enjoy the hotel's soothing, relaxing resort life to the full. Guests on the premier luxury floor can enjoy blissful hospitality in the club lounge.

### ■ No. of guest rooms: 175 (Hotel capacity: 565 people)

- Premier luxury floor Vista: 4
- Premier luxury floor Aqua: 41 (Inc. 1 royal suite & 1 junior suite)
- Superior floor Natura: 42 (Inc. 1 double-bed room)
- Deluxe floor Lumina: 88 (Inc. 8 double-bed rooms)

Check-in: 15:00 / Check-out: 11:00

\*For Premier luxury floor Aqua, check-in is 14:00 and check-out is 12:00

## RESTAURANT



### Japanese Cuisine Ohmi (Max. seating capacity: 60)

Offering new Japanese cuisine with an original take on Japanese traditions. Private rooms are available for commemorations and gatherings. (Private rooms avail.)



### Italian Dining Bel Lago (Max. seating capacity: 123, inc. 32 seats in cafe)

This restaurant affords superb views of Lake Biwa from its large windows. In addition to a buffet that lets you enjoy freshly prepared food, this restaurant offers plentiful a la carte and cafe-style menu options, making it a great choice for any situation from lunch through to bar time.

## BANQUET HALL



Ruri



Orange / Brown



Biwako



Nagara

Biwako Hotel has multipurpose reception halls which can cater to various needs, including a large reception hall which can accommodate up to 1000 people and a Japanese-style reception hall where guests can relax seated at tables.

### ■ Facilities

Name of venue	Size (㎡)	Room height (m)	Width (m)	Length (m)	Capacity (no. of people)						
					Banquet	Seated	Standing	School	Theater	Square seating (separate)	Eating together
Ruri	900㎡	7.00	41.0	22.0	500	450	800	750	1,000		
Rose	300㎡	2.80	17.5	17.5	120	120	200	180	280	80	
White	70㎡	2.70	8.0	9.5	40	30	40	32	65	32	
Green	70㎡	2.70	8.0	9.5	40	30	40	32	65	32	
Orange	70㎡	2.70	8.0	9.5	40	30	40	32	65	32	
Brown	70㎡	2.70	8.0	9.5	40	30	40	32	65	32	
Cobalt	35㎡	2.70	4.0	9.5	16	20			30		

Name of venue	Size (㎡/ No. of tatami)	Room height (m)	Width (m)	Length (m)	Capacity (no. of people)						
					Banquet	Seated	Standing	School	Theater	Square seating (separate)	Eating together
Biwako	126 tatami	2.95	16.2	11.2							120
Hagi	56 tatami	2.85	12.6	6.4							48
Nagara	30 tatami	2.25	5.4	9.0							32
Karasaki	24 tatami	2.55	5.4	7.2							24
Hira	17.5 tatami	2.55	4.5	6.3							10
SAZANAMI	114㎡	3.30									49

## ACCESS MAP



### ■ By train

● From JR Kyoto Station: Approx. 15 min.  
(JR Biwako Line) → JR Otsu Station → Approx. 5 min. by shuttle bus \* Free shuttle bus departs from JR Otsu Station at intervals of 20 min. (as at Jan. 2022)

### ■ By plane

● From Osaka International Airport: Approx. 75 min.  
(Airport Limousine Bus) → Alight at JR Kyoto Sta. Hachijoguchi bus stop → JR Kyoto Station → JR Otsu Station → Approx. 5 min. by shuttle bus  
● From Kansai International Airport: 1) Approx. 105 min. 2) Approx. 95 min.  
1) (Airport Limousine Bus) → Alight at Kyoto Sta. Hachijoguchi bus stop → JR Kyoto Station → JR Otsu Station → Approx. 5 min. by shuttle bus  
2) (JR Kansai-Airport Express "Haruka") → JR Kyoto Station → JR Otsu Station → Approx. 5 min. by shuttle bus

### ■ By car

● Approx. 5 min. from Otsu Interchange on the Meishin Expressway

\* Hotel parking lot (Capacity: 155 spaces) / People who use the hotel may park for free for a set amount of time.  
\* Overnight guests - Free 24 hr. / day. Reception hall guests: Free for 6 hr. Restaurant guests - Free for 4 hr.  
\* First-come-first-served (Reservations not possible), height limit applies (2.3 m limit). If the hotel parking lot is full, we will let you know of other parking lots in the neighborhood. (Fees apply)

### ■ Nearby tourist attractions

● Mii-dera Temple (Onjou-ji Temple) (Approx. 10 min. by car) ● Ishiyama-dera Temple (Approx. 15 min. by car) ● Heizan Enryaku-ji Temple (Approx. 40 min. by car)  
● Biwako Hall (Approx. 5 min. by car) ● MIHO MUSEUM (Approx. 50 min. by car) ● Shiga Prefectural Lake Biwa Museum (Approx. 35 min. by car)

# Hotel Keifuku Fukui Station

Fukui

A convenient business hotel about 1 minute on foot from JR Fukui Station.

A bus stop for highway buses heading to Tokyo, Osaka, Nagoya and Komatsu Airport, and the Echizen Railway, which is convenient for sightseeing, are right before your eyes.

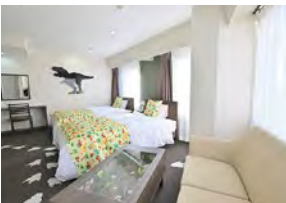
[The hotel was opened in 2018]



\*All photos are for illustrative purposes only.

## GUEST ROOM

Choose a room type to suit your needs from the various types available, from those for solo travelers to those with family.



Superior twin room



Moderate single

### ■ No. of guest rooms: 74 (Hotel capacity: 105 people) [All rooms are non-smoking]

- Moderate single rooms (11 m²): 45
- Moderate semi-double rooms (11 m²): 16
- Moderate double rooms (13 m²): 5
- Moderate twin rooms (17 m²): 4
- Superior twin rooms (22 m²): 2
- Universal twin rooms (21 m²): 1
- Japanese-style rooms: (19 m²): 1

Check-in: 15:00  
Check-out: 10:00

## ACCESS MAP



### ■ By train

● From Tokyo Station: Approx. 3 hr  
(Hokuriku Shinkansen) → JR Fukui Station → 1 min. on foot  
● From Osaka Station: Approx. 1 hr. 50 min.  
(JR Tokaido Main Line/Hokuriku Shinkansen) → JR Tsuruga Station → JR Fukui Station → 1 min. on foot  
● From Nagoya Station: Approx. 2 hr.  
(JR Tokaido Main Line/Hokuriku Shinkansen) → JR Tsuruga Station → JR Fukui Station → 1 min. on foot

### ■ By plane

● From Komatsu Airport: Approx. 60 min.  
(Airport bus) → Fukui Station East Exit bus alighting stop → Approx. 1 min. on foot

### ■ By car

● Approx. 10 min. from Hokuriku Expressway's Fukui Interchange.  
\* Hotel parking lot (18 spaces) / 1,000 yen/night. First-come-first-served (reservations not permitted). If the hotel parking lot is full, we will let you know of other parking lots in the neighborhood.

### ■ Nearby tourist attractions

● Fukui Prefectural Dinosaur Museum (Approx. 80 min. by train and bus) ● Eihei-ji Temple (Approx. 30 min. by limited express bus) ● Ichijodani Asakura Clan Ruins (Approx. 30 min. by bus) ● Tojinbo Cliffs (Approx. 60 min. by train and bus) ● Echizen Matsushima Aquarium (Approx. 60 min. by train and bus)  
● Maruoka Castle (Approx. 40 min. by bus)



# Hotel Keihan Tokyo Yotsuya

Tokyo

Direct from Shinjuku Station and Tokyo Station. Perfect as a base for business. Quiet location near the Akasaka Palace State Guest House.

3 minutes on foot from Yotsuya Station, reachable by JR Chuo Line, JR Sobu Line, Tokyo Metro Namboku Line, and the Marunouchi Line.

## GUEST ROOM

Bright, functional rooms for up to three guests, with a color scheme anchored in white.



Semi-double room



Twin room

■ No. of guest rooms: 1210  
(Hotel capacity: 243 people)

Single rooms (17 m²): 15  
Semi-double rooms (16 m²): 68  
Double rooms (20 m²): 6  
Twin rooms (21 m²): 14  
Compact Hollywood twin rooms (16 m²): 14  
Universal rooms (32 m²): 3

Check-in: 15:00 / Check-out: 11:00

## RESTAURANT

Restaurant Pizza Salvatore Cuomo Yotsuya  
(Max. seating capacity: 37)



The mixed Japanese and Western-style breakfast buffet offers seasonal vegetables that are oven-roasted to bring out their innate sweetness.



\*All photos are for illustrative purposes only.

## ACCESS MAP



### ■ By train

● From Tokyo Station: Approx. 15 min.

(JR Chuo Line) → JR Yotsuya Station → approx. 3 min. on foot

### ■ By plane

● From Haneda Airport: Approx. 45 min.

(Tokyo Monorail) → Monorail Hamamatsuchi Station → JR Kanda Station → JR Yotsuya Station → approx. 3 min. on foot

● From Narita International Airport: Approx. 75 min.

(Keisei Narita Sky Access Line) → Subway Asakusabashi Station → JR Yotsuya Station → approx. 3 min. on foot

### ■ By car

● 5 min. from Gaien exit on Metropolitan Expressway Route No. 4 Shinjuku Line

\*No exclusive parking at hotel.

### ■ Nearby tourist attractions

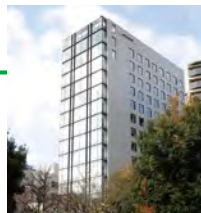
● Tokyo Dome (approx. 15 min. by train + on foot) ● Tokyo Tower (approx. 30 min. by train + on foot)  
● Nippon Budokan (approx. 20 min. by train + on foot) ● Tokyo Skytree (approx. 30 min. by train + on foot)

# Hotel Keihan Tsukiji Ginza Grande

Tokyo

Conveniently located near Ginza Station, with the Tsukiji Outer Market just a short walk away. Can be used as a base for business and sightseeing, and also available are a guest-only gym, a laundry corner, and other convenient facilities for longer-term stays.

2 mins. on foot from Tsukiji Station on the Tokyo Metro Hibiya Line, and 3 mins. on foot from Shintomicho Station on the Tokyo Metro Yurakucho Line



\*All photos are for illustrative purposes only.

## GUEST ROOM

A calm and relaxing interior with a harmonized blend of the traditional and the modern. Enjoy a stay offering even greater luxury on the Superior Floors located on floors 13 and 14.



Standard twin room



Double room

■ No. of guest rooms: 296  
(Hotel capacity: 745 people)

- Double rooms (16 m²): 12  
- Double rooms (19 m²): 70  
- Double rooms (22 m²): 10  
- Casual twin rooms (21 m²): 18  
- Corner twin rooms (25 m²): 10  
- Standard twin rooms (23 m²): 100  
- Comfort twin rooms (27 - 31 m²): 15  
- Comfort corner twin rooms (34 m²): 10  
- Superior floor double rooms (19 m²): 13  
- Superior floor double rooms (22 m²): 2  
- Superior floor standard twin rooms (23 m²): 20  
- Superior floor comfort twin rooms (27 - 31 m²): 4  
- Superior floor comfort view twin rooms (30 m²): 4  
- Superior floor deluxe twin rooms (40 m²): 2  
- Universal rooms (27 m²): 5  
- Deluxe quad rooms (42 m²): 1

Check-in: 15:00 / Check-out: 11:00

## RESTAURANT

Restaurant Tomoru (Max. seating capacity: 137)



A relaxing space surrounded by large windows and with a view out over Tsukijigawa Park. Guests can enjoy a wholesome and satisfying buffet breakfast, as well as a casual lunch and dinner at this restaurant.

## ACCESS MAP



### ■ By train

● From Tokyo Station: (1) (2) Approx. 15 min.

1) (Tokyo Metro Marunouchi Line) → Tokyo Metro Ginza Station → Tokyo Metro Tsukiji Station → approx. 2 min. on foot

2) (JR Yamanote Line) → JR Yurakucho Station / Tokyo Metro Yurakucho Station → Tokyo Metro Shintomicho Station → approx. 3 min. on foot

### ■ By plane

● From Haneda Airport: 1) Approx. 40 min. 2) Approx. 45 min.

(1) (Keikyu Airport Express) → Subway Higashi-Ginza Station → Tokyo Metro Higashi-Ginza Station → Tsukiji Station → approx. 2 min. on foot

(2) (Tokyo Monorail) → Monorail Hamamatsuchi Station / JR Hamamatsuchi Station → JR Yurakucho Station / Tokyo Metro Yurakucho Station → Tokyo Metro Shintomicho Station → approx. 3 min. on foot

● From Narita Airport: 1) Approx. 70 min. 2) Approx. 90 min.

(1) (Skyliner) → Keisei Ueno / Tokyo Metro Ueno Station → Tsukiji Station → approx. 2 min. on foot

(2) (Skyliner) → Keisei Nippori Station / JR Nippori Station → JR Yurakucho Station / Tokyo Metro Yurakucho Station → Shintomicho Station → approx. 3 min. on foot

### By car

● Approx. 5 min. from the Shintomicho exit of the Metropolitan Expressway C1 Inner Circular Route

- Hotel parking lot / 1 night's parking - 2,000 yen. \*First-come-first-served (reservations not permitted)

\*Height restriction applies (1.55 m limit for 18 vehicles, 2.0 m limit for 18 vehicles (height: 2.0m, total width: 1.95m, total length: 5.3m)).

\*The road in front of the hotel parking lot is restricted to vehicles weighing less than 3 t.

# Hotel Keihan Asakusa

Tokyo

A good location allowing for strolls around Tokyo's downtown, Asakusa, with areas like Senso-ji Temple and Kaminarimon Gate that give off an air of Edo and easy access to the Tokyo Skytree®, which boasts a height of 634 meters.

Ideal for business, as it is 20 minutes from Tokyo Station by train.

2 minutes on foot from Tsukuba Express Line Asakusa Station.



\*All photos are for illustrative purposes only.

## GUEST ROOM

Compact and comfortable rooms. New guest rooms in 2025 for up to five guests.



Single room



Casual twin

■ No. of guest rooms: 174  
(Hotel capacity: 338 people)

- Single rooms (12 m²): 17  
- Semi-double rooms (14 m²): 56  
- Double rooms (14 m²): 19  
- Twin rooms (15 m²): 17  
- Casual twin rooms (14 m²): 43  
- Hollywood twin rooms (18 m²): 18  
- Universal rooms (25 m²): 1  
- Deluxe rooms (28 m²): 1  
- (New guest rooms) Superior twin rooms (40 m²): 2

Check-in: 15:00  
Check-out: 11:00

## ACCESS MAP



### ■ By train

● From Tokyo Station: Approx. 20 min.

(JR Yamanote Line) → JR Akihabara Station → Tsukuba Express Asakusa Station → approx. 2 min. on foot

### ■ By plane

● From Narita International Airport: Approx. 65 min.

(Keisei Line (Rapid train) / Toei Asakusa Line (Rapid train) direct service) → Subway Asakusa Station → approx. 10 min. on foot

● From Haneda Airport: Approx. 50 min.

(Keikyu (Limited express) / Toei Asakusa line (Limited express) direct service) → Asakusa Station → approx. 10 min. on foot

### ■ By car

● Approx. 7 min. from the "Iriya" exit on the Metropolitan Expressway route no. 1  
● Approx. 7 min. from the "Komagata" exit on the Metropolitan Expressway route no. 6  
● Approx. 10 min. from the "Ueno" exit on the Metropolitan Expressway route no. 1

- Hotel parking lot (10 spaces avail) / 2,000 yen/night. First-come-first-served (reservations not permitted), height restriction applies (1.55 m limit).

### ■ Nearby tourist attractions

● Senso-ji temple (Approx. 5 min. on foot) ● Asakusa Public Hall (Approx. 5 min. on foot) ● Asakusa Hanayashiki (Approx. 2 min. on foot)  
● Tokyo Skytree (Approx. 10 min. walk to the Tobu Skytree Line Asakusa Station, approx. 3 min. by train)



# Hotel Keihan Nagoya

Aichi



\*All photos are for illustrative purposes only.

Located in the heart of Nagoya, the Sakae/Nishiki area, it carries a refined metropolitan image.  
Can be used not just for business, but also sightseeing and leisure.  
Approx. 3 min. on foot from municipal subway Sakura-dori Line Marunouchi Station and Hisaya-odori Station.

## GUEST ROOM



Twin room



Semi-double room

■ No. of guest rooms: 259  
(Hotel capacity: 632 people)

- Double room (17.5 m²): 134
- Hollywood twin rooms (21 m²): 11
- Twin rooms (21 m²): 101
- Superior twin rooms (31 m²): 12
- Universal rooms (31 m²): 1

Check-in: 15:00  
Check-out: 11:00

## RESTAURANT

Breakfast restaurant (Max. seating capacity: 88)



Enjoy a breakfast buffet featuring local Nagoya specialties such as Hitsumabushi-style rice, tebasaki chicken wings, and kishimen flat noodles. The restaurant has a cafe time, during which it can be used as a co-working space.

## ACCESS MAP



■ By train/plane

● From Chubu Centrair International Airport: 1) Approx. 35 min. 2) Approx. 60 min.

- 1) (Meitetsu Airport Line) → Meitetsu Nagoya Station / Subway Nagoya Station → Subway Marunouchi Station → Approx. 4 min. on foot
- 2) (Airport Limousine Bus) → Subway Sakae Station → Subway Hisaya-odori Station → Approx. 2 min. on foot

● From the Prefectural Nagoya Airport: Approx. 33 min.

- 2) (Airport bus) → Subway Sakae Station → Approx. 13 min. on foot

■ By car

● Approx. 5 min. from the Marunouchi exit of the Nagoya Urban Expressway Ring Route

# Hotel Keihan Sendai

Miyagi



\*All photos are for illustrative purposes only.

Facing the rows of zelkova trees on Aoba-Dori Avenue that are the symbol of Sendai, this hotel is an ideal base for exploring Sendai.

As a base to visit areas around Tohoku, it comes highly recommended for business use.

8 mins. on foot from JR Sendai Station, and 2 mins. on foot from JR Aobadori Station

## GUEST ROOM



Twin room



Semi-double room

■ No. of guest rooms: 201  
(Hotel capacity: 474 people)

- Semi-double rooms (17.4 - 18.5 m²) / 50
- Double rooms (17.5 - 18.5 m²): 53
- Twin rooms (24.3 - 26.3 m²): 97
- Universal rooms (29 m²): 1

Check-in: 15:00  
Check-out: 11:00

## RESTAURANT

Breakfast restaurant (Max. seating capacity: 93)



This restaurant offers a select breakfast buffet with unique local cuisine from Tohoku, such as fish cakes and konjac balls. Enjoy a refreshing breakfast in a space filled with sunlight.

## ACCESS MAP



■ By train/plane

● From Sendai Airport: 1) Approx. 38 min. 2) Approx. 58 min.

- 1) (Sendai Airport Access Line) → JR Sendai Station → Approx. 8 min. on foot
- 2) (Airport Limousine Bus) → JR Sendai Station → Approx. 8 min. on foot

\* Approx. 2 minutes on foot from JR Aobadori Station

■ By car

● Approx. 15 min. from Sendai-Miyagi Interchange on the Tohoku Expressway

# Hotel Keihan Sapporo

Hokkaido



\*All photos are for illustrative purposes only.

A perfect base for sightseeing located near the main train station. Guests can enjoy an ice cream after a dip in the hotel's large guest-only communal bath.

Rooms include train view rooms from which guests can watch the trains below.

4 mins. on foot from Sapporo Station

## GUEST ROOM



Single room



Twin room

■ No. of guest rooms: 200  
(Hotel capacity: 418 people)

- Single/semi-double rooms (15 m²): 36
- Double rooms (16 m²): 28
- Compact twin rooms (16 m²): 62
- Superior double rooms (18 m²): 10
- Casual twin rooms (18 m²): 22
- Standard twin/triple rooms (22 m²): 26
- Superior twin/triple rooms (26 m²): 10
- Universal rooms (29 m²): 1
- Deluxe rooms (36 m²): 1
- Connecting rooms (suite of 2) (26 m² + 16 m²): 4

Check-in: 15:00  
Check-out: 11:00

## RESTAURANT

Restaurant Piedmont (Max. seating capacity: 59)



The restaurant offers a breakfast buffet to delight customers that includes delicious Hokkaido-grown rice, roast fish, and dishes flavored with miso, sesame, or vinegar.

## ACCESS MAP



■ By train/plane

● From New Chitose Airport: Approx. 40 min.

(JR Rapid Airport) → JR Sapporo Station → Approx. 4 min. on foot

■ By car

● Approx. 10 min. from the "Sapporo Kita" exit on the Sapporo Expressway

- Hotel parking lot (20 spaces avail.) / 1 night's parking - 1,500 yen.  
First-come-first-served (reservations not permitted), height limits apply (Regular vehicles: 1.55 m limit. High-roof vehicles: 2.00 m limit).  
If the hotel parking lot is full, we will let you know of other parking lots in the neighborhood.

■ Nearby tourist attractions

- Hokkaido University (Approx. 5 min. on foot) ● Hokkaido Government Office (Approx. 5 min. on foot)
- Former Hokkaido Government Office Building (Approx. 5 min. on foot) ● JR Tower (T38) (Approx. 10 min. on foot)
- Sapporo Clock Tower (Approx. 15 min. on foot)



# Keihan Railway

We have created a railway network that extends over a total operating distance of 91.1 km and includes the Keihan Main Line, the Oto Line, the Nakanoshima Line, the Katano Line, the Uji Line, the Keishin Line, the Ishiyama-sakamoto Line, and the Kosaku Line. Many people use our railway network when commuting between the two major cities of Osaka and Kyoto for work and study, and to access Kyoto and Lake Biwa for sightseeing.



8000 series



3000 series



13000 series

## Premium Car



Starting from August 2017, one car of each 8-car train was made a special reserved-seat "Premium Car". The Premium Cars meet the needs of people who wish to ensure that they are able to sit down when travelling even if it means paying extra, and people who wish to travel in a relaxed manner in a high-quality space.

- Fees: Regular fare + 400 - 500 yen (depends on section travelled)
  - Service: Dedicated attendant, free Wi-Fi, reclining seats, electrical outlets for all seats and tables for some seats, luggage spaces for large luggage, etc.
- \* Some trains do not have attendants for some journey sections.

## Attractions along the train line

### Osaka area



The Osaka area is full of enjoyable places. To start with, there is Osaka Castle, which sits in lush surroundings and is noted in connection with *Taiko* Toyotomi Hideyoshi. Other attractions include Osaka Aquarium Kaiyukan, one of the world's largest aquariums, with its popular huge whale shark, and the Universal Studios Japan theme park, full of the world's best wonder and thrills.

### Gion / Higashiyama area



Gion and Higashiyama stand out among Kyoto's popular areas. There, you can visit Yasaka-jinja Shrine and Kiyomizu-dera Temple, and also experience townscapes typical of Kyoto, such as Sanneizaka and Nineizaka.

### Hirakata area



The Hirakata area has various tourist spots, including Hirakata Park, which everyone from small children to adults can enjoy all year round, with its pool in summer, illumination from fall to spring, and skating in winter. As well, there is the "Hoshi no Buranko", one of the largest suspension bridges in Japan, where you can enjoy magnificent views of the colored leaves in fall.

### Lake Biwa area



Shiga Prefecture has Lake Biwa, Japan's largest and oldest lake, and has flourished as a strategic land and water transportation position since old times. It has many historic shrines and temples, such as Hiyoshi Taisha Shrine, Mii-dera Temple, and Ishiyama-dera Temple, and also boasts plenty of tourist facilities for your enjoyment, such as Biwako Cruise.

### Fushimi / Uji area

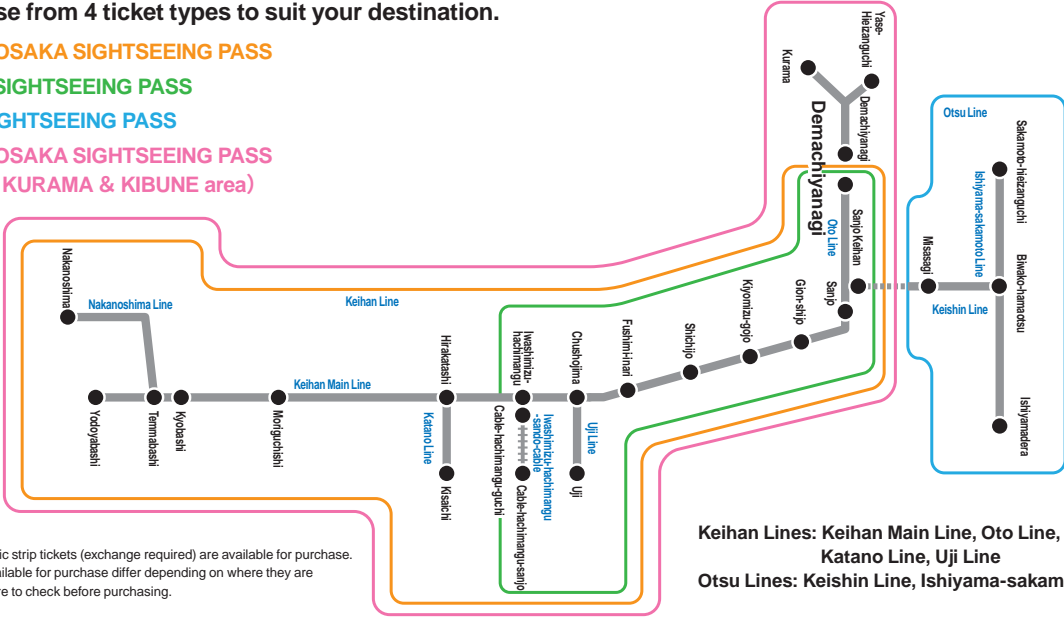


Fushimi, Kyoto, which has been a great sake producer since old times. As well as sake breweries, famous sightseeing places such as Fushimi-inari-taisha Shrine and national treasure Iwashimizu-hachimangu Shrines dot the area. In Uji, a place of Heian Period culture and tea, you can enjoy visiting the World Heritage sites Byodoin Temple and Ujigami-jinja Shrine, as well as tea-related establishments.

## Bargain passenger tickets

You can choose from 4 ticket types to suit your destination.

- KYOTO-OSAKA SIGHTSEEING PASS
- KYOTO SIGHTSEEING PASS
- OTSU SIGHTSEEING PASS
- KYOTO-OSAKA SIGHTSEEING PASS (Greater KURAMA & KIBUNE area)



\*Digital tickets and magnetic strip tickets (exchange required) are available for purchase. The passenger tickets available for purchase differ depending on where they are purchased from, so be sure to check before purchasing.

Keihan Lines: Keihan Main Line, Oto Line, Nakanoshima Line, Katano Line, Uji Line  
Otsu Lines: Keishin Line, Ishiyama-sakamoto Line

### One-day ticket, 24-hour ticket for sightseeing in Kyoto and Osaka

A one-day ticket for unlimited rides on all Keihan Lines and the Iwashimizu-hachimangu-sando-cable. Convenient for popping out for day-trips between Osaka and Kyoto.

- Sales period: April 1, 2025 to September 30, 2025
- Valid for use: April 1, 2025 to October 31, 2025
- Price: One-day ticket: 1,500 yen; 24-hour ticket: 1,700 yen (digital tickets only)
- Valid area: All Keihan Lines and the Iwashimizu-hachimangu-sando-cable [Unlimited stops permitted] \*Excluding Otsu Lines

### One-day ticket, 24-hour ticket for sightseeing in Kyoto

A one-day ticket for unlimited rides in the Keihan Railway Kyoto area (Iwashimizu-hachimangu Station - Demachiyana Station / Uji Line / Iwashimizu-hachimangu-sando-cable). This is a very cheap, convenient ticket for Kyoto sightseeing.

- Sales period: April 1, 2025 to September 30, 2025
- Valid for use: April 1, 2025 to October 31, 2025
- Price: One-day ticket: 1,000 yen, 24-hour ticket: 1,200 yen (digital tickets only)
- Valid area: Iwashimizu-hachimangu Station - Demachiyana Station, Uji Line, Iwashimizu-hachimangu-sando-cable [Unlimited stops permitted]

### OTSU SIGHTSEEING PASS

A one-day ticket for unlimited rides on all Otsu Lines (Keishin Line, Ishiyama-sakamoto Line). Use this ticket to explore the famous places and historic ruins of Lake Biwa and Otsu to your heart's content.

- Sales period: April 1, 2025 to September 30, 2025
- Valid for use: April 1, 2025 to October 31, 2025
- Price: 700 yen
- Valid area: All Keihan Railway Otsu Lines [Unlimited stops permitted] (Misasagi Station - Biwako-hamaotsu Station, Ishiyamadera Station - Sakamoto-hieizanguchi Station) \* Not valid for travel on the Kyoto City Subway. \* Digital tickets not available

### KYOTO-OSAKA SIGHTSEEING PASS (Greater KURAMA & KIBUNE area)

From Osaka to Kyoto, Kurama, Kibune, Yase. A one-day ticket for unlimited rides on the Keihan Railway and Eizan Railway.

- Sales period: Magnetic strip: April 1, 2025 to September 30, 2025; Digital: April 1, 2025 to March 31, 2026
  - Valid for use: Magnetic strip: April 1, 2025 to October 31, 2025; Digital: April 1, 2025 to April 30, 2026
  - Price: 2,100 yen
  - Valid area: Keihan Railway: All Keihan Lines and the Iwashimizu-hachimangu-sando-cable [Unlimited stops permitted]; Eizan Railway: All lines [Unlimited stops permitted]
- \* Refer to page 27 for the Eizan Railway route map.

\* Separate fees apply for use of the Keihan Railway Premium Car and Liner. \* Each ticket is valid for only one person. \* Product details, places of sale, and so on may change.

● Detailed ticket information is here

<https://www.keihan.co.jp/travel/en/trains/passes-for-visitors-to-japan/>



QR Translator

English  
繁體中文  
簡體中文  
한국어

## Chartered train

Travel sections (3 or more sections one way) fare × 100 people (quota) × No. of cars  
\* Example of charter fee calculation  
<If chartering a 4-car train for a one-way trip between Demachiyana Station and Uji Station>  
410 yen (travel section fare) × 100 people (quota) × 4 cars = Total fee of 164,000 yen  
\* Incl. railway station barrier-free fees

Otsu Line charter train fee calculation 3-section fare × Car passenger quota  
- 800 series  
330 yen × 386 people (quota) = 127,380 yen  
Travel sections are limited to between Shinomiya Station and Biwako-hamaotsu Station  
- 600 type, 700 type car  
330 yen × 190 people (quota) = 62,700 yen  
Travel section: Ishiyamadera Station - Sakamoto-hieizanguchi Station  
Shinomiya Station - Biwako-hamaotsu Station

## Group discount

No. of passengers	No. of passengers free of charge	School group		Regular group
		Junior high school	Other	
25 to 99	1	30% discount	20% discount	10% discount
100 to 149	2	40% discount	30% discount	20% discount
150 to 199	3			
200 to 249	4			
250 to 299	5	50% discount	40% discount	30% discount
300 to 349	6			
Every 50 passengers thereafter	+1			

\* Amounts less than 10 yen are rounded up to the nearest 10.



# Eizan Railway

With the entrance to northern Kyoto City, Demachiyanagi, as a starting point, Eizan Railway operates the panorama train “Kirara” to Kurama and Kibune and the sightseeing train “Hiei” to Yase located at the foot of Mt. Hiei.



Sightseeing train “Hiei”



Panorama train Kirara



Refurbished Nostalgic 731 Kai

## Bargain passenger tickets

### A one-day ticket for unlimited rides on the Eizan Railway

#### ◎ Eizan Railway one-day train ticket “Ee-kippu”

[Eizan Railway] Unlimited rides on all lines  
Price: Adult - 1,200 yen, Child - 600 yen  
Available for purchase at: Demachiyanagi Station, Shugakuin Station, Kurama Station (9:40 to 16:30)

### Bargain passenger tickets to Kurama and Kibune

#### ◎ Subway & Eiden (Eizan Railway) Kurama & Kibune day ticket

[Keihan Railway] Unlimited rides between Sanjo and Demachiyanagi  
[Eizan Railway] Unlimited rides on all lines  
[Subway] Unlimited rides on all lines  
Price: Adult - 2,100 yen  
Available for purchase at: Demachiyanagi Station, Kyoto Municipal Transportation Bureau's Kyoto City Bus & Subway Information Centers, commuter pass sales locations, Kyoto Tourist Information Center (“Kyo Nabi”), and Kansai Tourist Information Center Kyoto

#### ◎ Northern Kyoto City / Woods and Water Ticket

[Eizan Railway] Unlimited rides on all lines  
[Kyoto Bus] Unlimited rides northward from Imadegawa (Excluding north of Kurama Onsen and Kodeishi, and Ginkakuji-michi (Ginkakuji Temple) - Hiei Sanchō)  
Price: 1,800 yen  
Available for purchase at: Demachiyanagi Station, Shugakuin Station, Kurama Station (9:40 to 16:30)

### Bargain passenger tickets to Mt. Hiei

#### ◎ Mt. Hiei day ticket

[Eizan Railway] Unlimited rides for one day between Demachiyanagi and Yase-Hieizanguchi  
[Eizan Cable Car, Ropeway] Unlimited rides for one day  
[Kojak Kotsu Bus / Keihan Bus / Kyoto Bus] Unlimited rides for one day on shuttle bus within Mt. Hiei  
[Hieizan Enryaku-ji Temple] To-do / Sai-to / Yokawa pilgrimage  
Price: Adult - 2,800 yen, Child - 1,400 yen  
On sale from: March 20 to December 7, 2025

#### ◎ Hieizan all access pass

[Eizan Railway] Unlimited rides for one day between Demachiyanagi and Yase-Hieizanguchi  
[Eizan Cable Car, Ropeway] Unlimited rides for one day  
[Kojak Kotsu Bus / Keihan Bus / Kyoto Bus] Unlimited rides for one day on shuttle bus within Mt. Hiei  
[Sakamoto Cable Car] Unlimited rides for one day between Cable Enryakuji and Cable Sakamoto  
[Kojak Kotsu Bus] Unlimited rides for one day between Cable Sakamoto and Hieizan Sakamoto  
[Hieizan Enryaku-ji Temple] To-do / Sai-to / Yokawa pilgrimage  
Price: Adult - 3,200 yen, Child - 1,600 yen  
On sale from: March 20 to December 7, 2025

## Group rides / Chartered train

### ◎ Group prices

	25 to 99 people	100 to 299 people	300 or more people
Regular group	10% discount	20% discount	20% discount
School group	20% discount	30% discount	30% discount

\* School group discounts are limited to school groups led by a staff member/s of the school or the like. Groups composed of only preschool pupils, children, or students are regarded as regular groups.  
\* Depending on the number of people in a group, a certain number of group members will be free of charge, as per below:  
Groups of 25 to 49: 1 member, Groups of 50 to 99: 2 members, Groups of 100 to 149: 3 members, Groups of 150 to 199: 4 members

### ◎ An Eizan Railway train can be chartered and used for various social gatherings. The schedule will be decided after consulting with you regarding your wishes

[Examples of past charters]  
- Banquets, farewell and welcome parties (please arrange your own food and beverages)  
- Recitals  
- Movie/drama etc. shoots

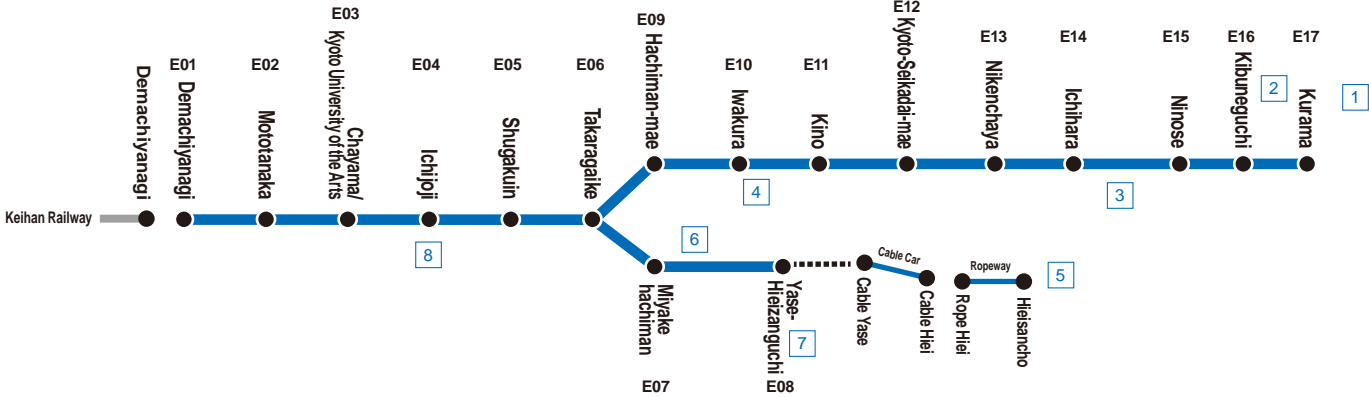
### ◎ Charter fees are calculated as follows: Travel section adult regular fare total × Car passenger quota + Car holding fee, etc.

[Example of charter fee calculation]  
If chartering a 1-car train for one round trip between Demachiyanagi Station and Yase-Hieizanguchi Station  
(Adult one-way regular fare 280 yen × 2) × Car passenger quota 87 = 48,720 yen

\* Please see the official website regarding matters to be noted.

Bookings & inquiries Bookings are accepted between 3 months and 2 weeks prior to the charter date. Transportation Section of the Railway Division (staff member responsible for transportation)  
TEL 075-781-5121 (9:00 to 17:00)

## Guide to routes



### 1 Kurama-dera Temple

Many people visit Kurama-dera Temple to recharge, healing themselves spiritually and physically in the refreshing air. Kurama-dera Temple is famous as the temple in the legend of the tengu (mountain spirit) and Ushiwakamaru (Minamoto no Yoshitsune) and is noted in connection with the poet Yosano Akiko as well.

■ Access Alight at Kurama Station. Approx. 3 min. walk to the Deva temple gate, and 30 min. walk or 2 min. by cable car and 10 min. walk to main building.



### 2 Kifune-jinja Shrine

The god of water which the Kifune-jinja Shrine worships is held in deep reverence. This shrine is also known as the origin of *ema*, votive wooden tablets presented in prayer. In summer there is a water festival and the *Tanabata* festival, and in fall people enjoy watching the beautiful colored leaves and dreamy illumination displays.

■ Access Alight at Kibuneguchi Station, change to a Kyoto Bus and ride for 5 min. to the shrine (Approx. 30 min. on foot)



### 3 Momiji Tunnel

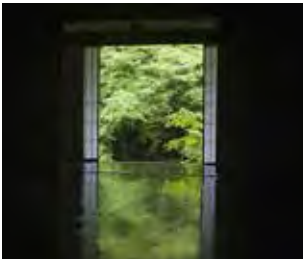
Many maple trees (“momiji”) line both sides of the railway for about 250 meters between Ichihara Station and Ninose Station, and this is called the “Momiji Tunnel”. Very beautiful fall colors can be enjoyed from the train windows.



### 4 Jissoin Monzeki Temple

This Monzeki temple (temple with connections to the Imperial Family) was formerly a temple of the Jimon school of the Tendai sect of Buddhism. In the temple are two gardens and a painting on a fusuma by the Kano school. The temple houses many treasures connected with the Imperial Family. You can appreciate the temple's lovely rock gardens and cherry blossoms in the spring, beautiful dappled greenery reflected on the floorboards from the start of summer, and pretty colored leaves reflected on the floorboards in fall.

■ Access Alight at Iwakura Station and walk about 20 min. to the temple, or alight at Hachiman-mae Station and change to a Kyoto Bus for the temple.



### 5 World Heritage site Hieizan Enryaku-ji Temple

The head temple of the Tendai sect of Buddhism, founded by Dengyodaishi (Saicho). Many well-known monks in the history of Buddhism in Japan trained at Mt. Hiei in their young days, so this temple is also considered as the birthplace of Japanese Buddhism.

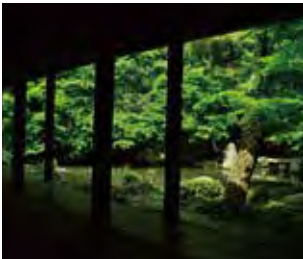
■ Access Alight at Yase-Hieizanguchi Station, take cable car and ropeway to Hieisancho (Mt. Hiei Summit), and go to Enryaku-ji Temple's areas by shuttle bus.



### 6 Renge-ji Temple

Kimyozan Renge-ji Temple, built by the Ohara highway. It has stone lanterns called “rengejikei” with hexagonal steeply inclined lantern shades. View the garden with its pond and arrangement of stones shaped like a crane and turtle, said by some to have been created by Ishikawa Jozan. Enjoy the new greenery of the maples at the start of summer and the colorful foliage in fall.

■ Access Alight at Miyakehachiman Station and walk about 10 min. to the temple.



### 7 Rurikoin Temple

Several hundred maple trees all around the temple grounds take on fall colors. The bright fall foliage and stunning view the Ruri garden offers are as pretty as a picture postcard.

■ Access Alight at the Eiden Yase-Hieizanguchi Station 5 min. on foot southward.



### 8 Shisendo Temple

The temple has a great poets room which displays portraits of 36 great Chinese poets, painted by Kano Tan'yu, and thus the temple came to be called Shisendo (“hall of great poets”). The Chinese-style garden is an exemplary fine garden, charming even on rainy days, adding to the temple's great popularity.

■ Access Alight at Ichijoji Station and walk 15 min. to the temple.





# Randen (Keifuku Electric Railroad)

The Randen Lines connect directly to famous sightseeing spots of western Kyoto.  
Western Kyoto is dotted with temples which are World Cultural Heritage Sites.  
The Arashiyama Main Line connects Shijo-Omiya in the east with Arashiyama in the west in 24 minutes.  
The Kitano Line's stations are named after famous shrines and temples.



New KYOTRAM Mobo Type 1 Carriage



Sakura (cherry blossom) Tunnel  
(between Narutaki Station and Utano Station)



Kimono Forest (In Arashiyama Station premises)

## Bargain passenger tickets

### If your destination is Toei Kyoto Studio Park

#### ◎ Ticket combining Randen and Toei Kyoto Studio Park

This ticket allows entry into the Toei Kyoto Studio Park and unlimited travel for one day on the Randen lines.

Price: Adult - 2,900 yen  
Junior and senior high school students: 2,000 yen,  
Child - 1,450 yen  
Sold at these stations: Shijo-Omiya, Katabiranotsuji, Arashiyama,  
Kitano-Hakubaicho.

### Perfect for sightseeing in Kyoto City

#### ◎ Kyoto subway/Randen one-day ticket

This ticket allows unlimited travel for one day on the Randen tramlines (Arashiyama Main Line, Kitano Line) and the Kyoto City Subway (Karasuma Line, Tozai Line). This allows you to move smoothly in all directions in Kyoto, making this ticket ideal for sightseeing within Kyoto City.

Price: 1,300 yen (Adult ticket only)  
Sold at these stations: Shijo-Omiya, Katabiranotsuji, Arashiyama,  
Kitano-Hakubaicho.

### Convenient for Kyoto sights, such as Tenryu-ji Temple and Ninna-ji Temple

#### ◎ Randen 1-day Pass

A one-day ticket for unlimited rides on Randen Lines (Arashiyama Main Line, Kitano Line). Perfect for exploring temples and shrines along Randen lines.

Price: Adult - 700 yen, Child - 350 yen  
Sold at these stations: Shijo-Omiya, Katabiranotsuji, Arashiyama,  
Kitano-Hakubaicho.

## Fares

### ◎ Regular fares (One-way) \* Flat fare wherever you travel

Adult	250 yen
Child	120 yen

### ◎ Group discount

25 to 99 people	10% discount
100 to 299 people	20% discount
Groups 300+	30% discount

### ◎ Charter fee

Basic tram fee			25,000 yen
Fare - 1 person (one way)			130 yen
	Arashiyama holding fee	Up to 30 min.	Free
		Up to 60 min.	6,000 yen
		Up to 90 min.	12,000 yen
	Table (1)		2,500 yen
	Microphone (1)		2,500 yen
	Guide fee		5,500 yen

## Group travel products [Randen Guided Charter Tram]

Name: [Randen Guided Charter Tram (1)]]

Valid travel sections: 1) Start at Shijo-Omiya → Arrive at Arashiyama  
2) Start at Arashiyama → Arrive at Shijo-Omiya)

- \* Charter fee for one tram: 25,000 yen  
(1 charter tram, max. seating capacity 35, max. capacity 90)
- \* Guide fee 5,500 yen  
(The guide will introduce places worthy of note, etc. along the Arashiyama Main Line in the tram)
- \* Travel fare: 130 yen (one way) × No. of people

Charter is possible: All year \* Consultation is required if you wish to charter during Apr./Nov./Dec.

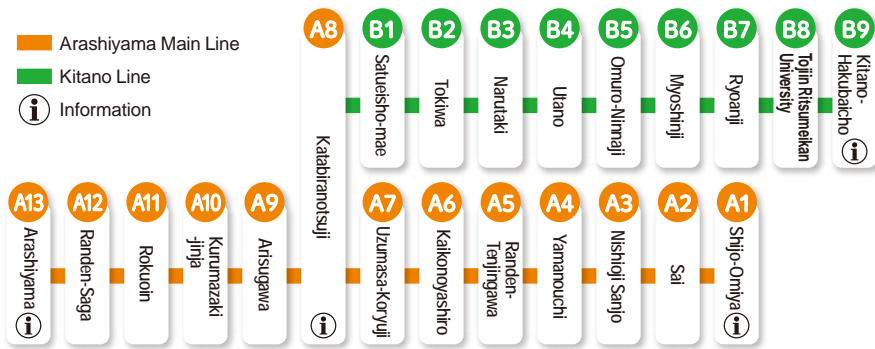
Product details: One Randen charter tram + A guide in the Randen charter tram who will introduce places of note, etc. along the tramline

Other options: Premium train (\* Separate fee required)

Seats and advertisements in the tram will be changed to suit the specifications of the charterer



## Guide to routes



### Randen is the nickname of the Keifuku trams.

The Arashiyama Line started service in 1910 as the "Arashiyama Densha Kido" (Arashiyama Electric Tram Railway), and people affectionately called it "Randen". Since starting, Randen trams have been a part of the history of Kyoto, and they are now the only trams left in Kyoto.

## Arashiyama Main Line

A route which connects Shijo-Omiya with Kyoto's popular sightseeing area "Arashiyama".  
Trams run on Kyoto's only tramline, along which are many scenic and historic places spanning ancient times to recent years.

### Arashiyama / Sagano

This area boasts Togetsukyo bridge and the Bamboo Forest of Sagano, as well as many famous temples. Its abundant nature in each season is also an attraction. Many tourists from all over Japan and overseas visit this area.

A13 Right next to Arashiyama Station



### Tenryu-ji Temple

The temple was founded by Ashikaga Takauji to pray for the repose of Emperor Go-Daigo's soul. It has many places worth seeing, including the Sogenchi Pond Garden, a designated special historical and scenic spot, that was created by Muso Soseki, the first chief priest of the temple.

A13 Right next to Arashiyama Station



### Kurumazaki-jinja Shrine

This shrine is dedicated to Kiyohara no Yorinari, a Confucian scholar from the late Heian period. The popular spiritual hot spot "kiyome no yashiro" (purification shrine) and the entertainment shrine in the grounds are also visited by many entertainers.

A10 Right next to Kurumazaki-jinja Station



### Rokuoin Temple

Kakuyuzan Hodo-ji Temple was established by Ashikaga Yoshimitsu to pray for the prolongation of his life. It is said that Rokuoin was given its name (literally "deer ruler temple") because a group of wild deer appeared when it was built as the Hodo-ji temple founder's resting place. Hodo-ji Temple was destroyed by fire in the Onin War, but Rokuoin was restored and shows its ancient form even today. The beauty of its maples also draws many visitors.

A11 About 4 min. on foot from Rokuoin Station



### Toei Kyoto Studio Park

A movie theme park in the area of Uzumasa, the birthplace of Japanese movies. Tour period drama filming, and experience the world of period dramas through outdoor sets, events, and park attractions! The ninja shows and character shows are also popular.

A7 About 5 min. on foot from Uzumasa-Koryuji Station

B1 About 2 min. on foot from Satsueisho-mae Station (Satsueisho-guchi)



### Nijo-jo Castle

Nijo-jo Castle is a flatland castle that was built as a base of the Tokugawa shogunate. Since then major repairs have been carried out on it. It has important cultural assets, including national treasure Ninomaru Palace, "Otemon" main gate and "sumi yagura" turrets, and Honmaru Palace. The garden of Ninomaru is a national designated special scenic spot.

A1 On foot or by bus from Shijo-Omiya Station

A5 From Randen-Tenjigawa Station, take the Subway Tozai Line to Nijo-mae and alight



## Kitano Line

Old temples which are World Cultural Heritage Sites are dotted along the line, as well as ancient and famous temples from the Heian dynasty to the Muromachi period. Change to the Arashiyama Main Line at Katabiranotsuji.

### Ninna-ji Temple

Ninna-ji Temple is a Monzeki temple whose construction was ordered by Emperor Koko and saw completion under Emperor Uda. It is also known as "Kyu-Omuro-Goshou". The temple is famous for its grounds with their many highlights, its delicate, beautiful main building, and its late-blooming cherry blossoms, "omuro-zakura".

B5 About 3 min. on foot from Omuro-Ninnaji Station



### Toji-in Temple

Ashikaga Takauji founded this temple. The temple was the Ashikaga dynasty's funeral temple, and many shoguns are buried there. The temple has two gardens in which lay two ponds, "fuyo-chi" and "shinji-ke", said to have been created by Muso Soseki. Between these gardens lies Hokyoin pagoda, the tomb of Ashikaga Takauji.

B8 About 5 min. on foot from Tojin Ritsumeikan University Station



### Myoshin-ji Temple

The temple was established when Emperor Hanazono donated his own imperial villa to found a Zen temple and made Kanzan Egen the founding monk. There are forty-six minor temples in the huge grounds. On the ceiling of the lecture hall is a picture of cloud and dragon done by Kano Tan'yu.

B6 About 3 min. on foot from Myoshinji Station



### Kitano Temmangu Shrine

This is the head shrine of all Japanese Temmangu Shrines which worship the god of scholarship, Sugawara no Michizane. It is known as one of the leading picturesque places in Kyoto. In spring the ume (Japanese apricot) garden is opened to the public and in fall it is the turn of the maple garden. On the 25th of every month there is a fair, and many visitors flock to the shrine.

B9 About 5 min. on foot from Kitano-Hakubaicho Station



### Ryoan-ji Temple

Hosokawa Katsumoto founded Ryoan-ji Temple. The temple's rock garden, which is formed by fifteen stones and white sand, is very famous. The Stone Water-Basin, said to be Mito Mitsukuni's contribution, and the fall foliage of Kyooy-chi Pond are also popular.

B7 About 7 min. on foot from Ryoanji Station



### Kinkaku-ji Temple (Rokuon-ji)

This temple is a branch temple of Shokoku-ji Temple. The golden pavilion of the reliquary hall is famous, so the temple is called Kinkaku-ji (Temple of the Golden Pavilion). After Ashikaga Yoshimitsu's death, the building was transformed from a villa into the temple, with Muso Kokushi as the founder.

B9 About 15 min. on foot from Kitano-Hakubaicho Station





# OKOSHI Bus (Kyoto Sightseeing Bus)

Kyoto's sightseeing spots are spread out over a wide area, so if you are not used to finding your way around it can be a quite a struggle. If you want to move around efficiently within a limited time, the OKOSHI Bus is convenient. Starting with a classic sightseeing course that takes in the popular sightseeing spots, the Sightseeing Buses offer a varied selection of courses, including limited period courses suited to the seasons and events. The Buses depart from Kyoto Station. Solo travelers can join the Bus tours too, and it is possible to join tours without booking in advance. The set price includes the bus fare, entrance fees to tourist attractions, a meal, and so on, so you can sightsee efficiently.



© OKOSHI Bus offers delightful charm and good value for money  
**Solo travelers can also join, and it is possible to join tours without booking in advance!** However, those who book are given priority.

**Bargain prices!**

The set price includes the bus fare, entrance fees, a meal (on courses which include a meal), and so on.

**Easy and relaxing!**

You can enjoy the scenery from the window while the bus moves between sightseeing spots.

**Wide variety and options!**

We're preparing special experiences, such as visit the temples that do not normally open to the public and Maiko Dance.

## Regular Kyoto sightseeing course

See the regular places of interest (AW)  
**Kyoto's three main attractions - Kinkaku-ji Temple, Ginkaku-ji Temple, and Kiyomizu-dera Temple**

Price	Adult: <b>6,500 yen</b> Child: <b>3,300 yen</b>
Starting point	South side of Osaka Station
Departure time	11:30 (April 13 to October 13, 2025)
Required time	Approx. 6.5 hr.
Starting point	JR Kyoto Station, Karasuma Exit
Departure time	9:30 (Mar. 20 to Apr. 12, 2025) 13:30 (Apr. 13 to Sep. 30, 2025)
Required time	Approx. 5 hr. Approx. 4.5 hr.

\* For Dep. of 9:30, please enjoy choosing and eating your own lunch in the Kiyomizu-dera Temple area.  
\* Customers taking the 11:30 departure from the south side of Osaka Station are free to enjoy lunch in the Kyoto Station area. Please be aware that the bus will subsequently depart from Kyoto Station Karasuma Exit at 13:30.

Kinkaku-ji Temple	Ginkaku-ji Temple
Kiyomizu-dera Temple	



Kiyomizu-dera Temple

**Kyoto One Day (BF)**  
**Tenryu-ji Temple, Arashiyama Bamboo Grove, Kinkaku-ji Temple, Fushimi-inari-taisha Shrine**

Price	Adult: <b>6,800 yen</b> Child: <b>3,480 yen</b>
Starting point	JR Kyoto Station, Karasuma Exit
Departure time	10:00
Required time	Approx. 6.5 hr.

Tenryu-ji Temple / Bamboo forest and Arashiyama stroll	
Kinkaku-ji Temple	Fushimi-inari-taisha Shrine



Fushimi-inari-taisha Shrine

**Arashiyama One-day in-depth (SW)**  
**Sightseeing train and going down the Hozugawa River**

Price	Adult: <b>12,500 yen</b> Child: <b>7,710 yen</b> Cherry blossom & Fall Season: Adult: 13,500 yen, Child: 8,210 yen
Starting point	JR Kyoto Station, Karasuma Exit
Departure time	9:00
Required time	Approx. 7 hr.

Sightseeing train	Going down the Hozugawa River
-------------------	-------------------------------

The course does not run when the sightseeing train is not operating  
In the case that the Hozugawa River attraction has been cancelled at the time of the bus course departure, due to the river rising or the like, the Hozugawa River attraction will not be included in the course. In this case, some course details will be changed.  
\* Enjoy choosing and eating your own lunch at Arashiyama.  
★ Arashiyama stroll coupon will be given



Sagano Romantic Train

**An evening with a maiko (apprentice geisha) (GW)**  
**Takagamine Shozan Garden, night view lookout**

Price	Adult: <b>10,500 yen</b> Child: <b>9,000 yen</b>
Starting point	JR Kyoto Station, Karasuma Exit
Departure time	17:30 17:40 (April only)
Required time	Approx. 3.5 hr.

Shozan Resort Garden, kaiseki-style Kyoto cuisine, the traditional dance of a maiko

At the meal, enjoy watching the traditional Kyoto dance of a maiko (apprentice geisha), and take a photo to remember the occasion. Receive a votive slip as a present from the maiko.

Night view lookout <Higashiyama summit>

The "Night view lookout" may be changed to a Kyoto city drive depending on weather conditions, traffic conditions, etc.



Maiko

## Where to board the bus

JR Kyoto Station ● Karasuma Exit



South side of Osaka Station



\* For details on days of operation and so on, please check the Keihan Bus website.

# SKY BUS KYOTO

Kyoto view from the top

Operating company: Myojo Bus Co.



\*The photo is for illustrative purposes only.

Multi-language audio guide highlights to you!!



## SKY BUS KYOTO preview

At SKY BUS KYOTO, we plan to operate courses that suit the seasons and events! As soon as we decide on something, we will notify you on our website, etc.

**Limited-time-only drive**

Scheduled to operate in about Apr. to Sep.

\* Tours may be suspended or canceled at the discretion of the operating company due to rainstorm, temperature, or other bad weather conditions that may interfere with safe operation.  
\* Course and tour durations are subject to change, and tours may be canceled due to events, traffic regulations, and other reasons. \*In wet weather, raincoats will be provided.

## SKY BUS KYOTO Take a drive right around!



Image of course



Goes around the city in approx. 1 hr. You can enjoy the views of Kyoto from your window.

Price	Adult: <b>2,500 yen</b> Child: <b>1,250 yen</b>
Starting point	JR Kyoto Station, Karasuma Exit
Departure time	10:00 13:00 15:00
Period of operation	We will notify you on our website. *Departure times vary depending on the day.
Required time	Approx. 1 hr.

© Course of operation  
(All sightseeing information will be given while you enjoy the sights from the bus window.)

JR Kyoto Station, Karasuma Exit  
Nishi Hongwanji Temple  
Nijo-jo Castle  
Reizei Family Residence  
Kyoto Gyoen National Garden  
Kamo Ohashi Bridge (Daimonji)  
Lake Biwa Canal  
Heian Jingu Shrine Otorii (Great Shrine Gate)  
Shoren-in Temple  
Chionin Temple, Sanmon Gate  
Yasaka-jinja Shrine  
Minamiza Theatre  
Nidec Kyoto Tower, etc.  
JR Kyoto Station, Karasuma Exit  
\*You can get off at Gion Bus Stop.



A convenient **Kansai Airport Limousine Bus** service between Kansai International Airport and Kyoto Station is also available. Please see the official website (<https://www.keihanbus.jp/limousine/kix/>) for more information, including timetables.

<Fare (e.g. between Kansai International Airport and Kyoto Station Hachijoguchi Exit)>

One-way: Adult: 2,800 yen, Child: 1,400 yen

Round-trip: Adult: 5,100 yen (valid for 14 days from the outward trip), 4,100 yen (on the same day)



## Chartered bus

### Keihan Bus

**Key areas** Kyoto, Osaka, Shiga  
**Number of buses** 2 large buses

We provide not only attentive service but also excellent facilities including spacious seating, TV, DVD, karaoke, and a refrigerator.



### Kojak Bus

**Key areas** All of Shiga and parts of Fukui and Kyoto  
**Number of buses** 9 large buses, 2 medium buses

We aim to be customers' favorite community-based bus company with a focus on the Lake Biwa area.



### Keifuku Bus Group

**Key areas** Fukui and Ishikawa  
**Number of buses** Keifuku Bus: 16 large buses, 2 medium buses, 2 small buses  
Fukui Kotsu: 7 large buses, 5 medium buses, 3 small buses  
Keikan Kotsu: 5 large buses, 6 medium buses, 4 small buses

With an expansive fleet ranging from large buses to shuttle buses, the Keifuku Bus Group helps customers to travel in comfort.



### Keihan Kyoto Kotsu

**Key areas** All of Kyoto and parts of Osaka  
Tamba-Sasayama City, Hyogo  
**Number of buses** 6 large buses, 1 small buses

We can also create a bespoke itinerary for your chartered bus trip and arrange accommodations and meals. We hope you enjoy using it for various purposes.



### Kyoto Bus

**Key areas** Kyoto City and other nearby cities, towns, and villages  
**Number of buses** 5 large buses, 7 medium buses, 6 small buses

It is useful for visiting famous places in Kyoto, short trips, school recreation, or group trips.



### Kyoto Keihan Bus

**Key areas** Kyoto and Hirakata City, Osaka  
**Number of buses** 8 large buses, 2 medium buses, 6 other buses (microbus, etc.)

Nicknamed "Urara," our buses are designed with the twelve layered ceremonial kimono motifs and loved by everyone. Customers can choose from large, medium, or micro buses according to their needs.





Eizan Cable Car and Ropeway

Connecting about 1.3 kilometers between Cable Yase Station and Cable Hiei Station in about nine minutes, the 561-meter ascent is the largest in Japan. It passes through a picturesque tunnel of foliage, and you can enjoy a panoramic view of Kyoto City from the window. It takes about three minutes to Hieisancho Station by the Ropeway.

Capacity: Eizan Cable Car: 100 people, Eizan Ropeway: 30 people  
\*Winter suspension period from early January to mid-March.

Fare

	Cable Car (Between Cable Yase Station and Cable Hiei Station)		Ropeway (Between Rope Hiei Station and Hieisancho Station)	
	One-way	Round-trip	One-way	Round-trip
Adult	600 yen	1,200 yen	400 yen	800 yen
Child	300 yen	600 yen	200 yen	400 yen

Group discount

	Cable Car (Between Cable Yase Station and Cable Hiei Station)	Ropeway (Between Rope Hiei Station and Hieisancho Station)
25 to 99 people	General: 10% discount, Student: 20% discount	
100 to 299 people	General: 20% discount, Student: 30% discount	

Fare waiver for groups:  
For a group of 25 to 49 people/1 passenger, 50 to 99 people/2 passengers, 100 to 149 people/3 passengers. Add one passenger for every 50 people.  
\*Please contact us in advance for group use. \*Please contact us for a group of 100 people or more.

Sakamoto Cable Car

Covering about 2,025 meters, it has the longest operating distance in Japan. It connects Cable Sakamoto Station and Cable Enryakuji Station in about 11 minutes, and the panoramic view of Lake Biwa is spectacular.

Capacity: 141 people

Fare

	One-way	Round-trip
Adult	870 yen	1,660 yen
Child	440 yen	830 yen

Group discount

Number of people	Regular group	School group		
		Junior high school	High school	Other schools
Groups 5+	School trip discount	25% discount	15% discount	—
Groups 8+	10% discount	25% discount	15% discount	10% discount
Groups 25+	15% discount	30% discount	20% discount	20% discount
Groups 100+	20% discount	40% discount	30% discount	30% discount
Groups 300+	30% discount	50% discount	40% discount	40% discount

Fare waiver for groups: Fare waived for 1 passenger for groups of 25 to 99 people, and for additional 1 passenger every 50 people above 100

Hieizan Driveway

An approximately 8.1 km toll road that connects Tanotani-toge in Shiga Prefecture's Otsu City to Hieisancho (Mt. Hiei Summit). Passing along the sides of Mount Hiei, this road offers a wonderful view of Lake Biwa's southern shore from Yumemigaoka located along the route and the city of Kyoto from the Tosendai parking lot, and features the World Heritage Site Hieizan Enryaku-ji Temple (To-do area) along the way, and the Garden Museum Hiei at the summit.

Fare

Section (Tanotani-toge tollgate)	Light to standard vehicles	Two-wheeled vehicles	Microbuses	Large vehicles
Round-trip to Yumemigaoka / hotel	860 yen	580 yen	2,100 yen	3,400 yen
Round-trip to Hieizan Enryaku-ji Temple (To-do area) / Hieisancho (Mt. Hiei summit)	1,700 yen	1,160 yen	4,200 yen	6,800 yen
Round-trip to Hieizan Enryaku-ji Temple (Sai-to area / Yokawa)	3,270 yen	2,260 yen	8,100 yen	13,050 yen
Enryaku-ji Temple (To-do / Sai-to / Yokawa) -> Ogi Tollgate	2,430 yen	1,680 yen	6,000 yen	9,650 yen
Enryaku-ji Temple (Sai-to / Yokawa) -> Enryaku-ji Temple (To-do) -> Ogi Tollgate	2,430 yen	1,680 yen	6,000 yen	9,650 yen

\*All parking lots are free of charge

Garden Museum Hiei

Located on the mountain at an elevation of 840 meters, with natural scenery dreamed of by Monet, Renoir, and Van Gogh recreated. Beautiful works of impressionist painters surrounded by blooming flowers. Colors are painted as if they were singing in praise of nature to soothe our hearts. Enjoy a relaxing and pleasant time at the garden with a view of Lake Biwa and Kyoto.

Opening hours: (Regular opening hours) 10:00 to 17:30 (last admission 17:00)  
(Fall opening hours) [November 1 to December 7] 10:00 to 17:00 (last admission 16:30 pm)  
Closed: Wednesday (excluding some dates) \*Winter closure from early December to early April

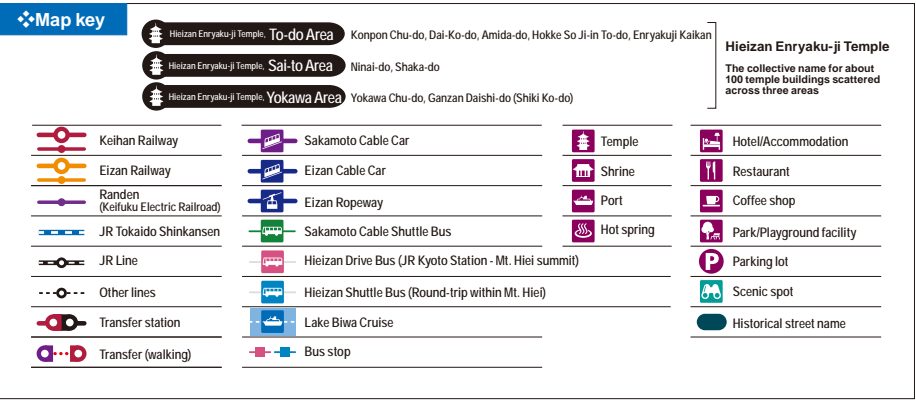
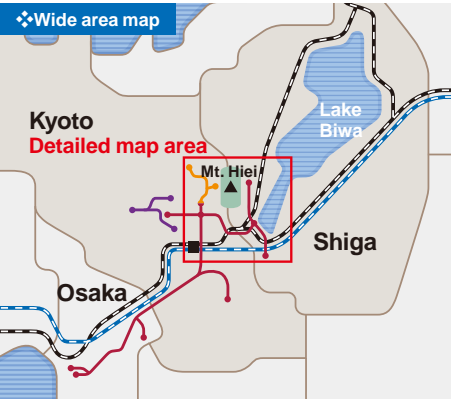
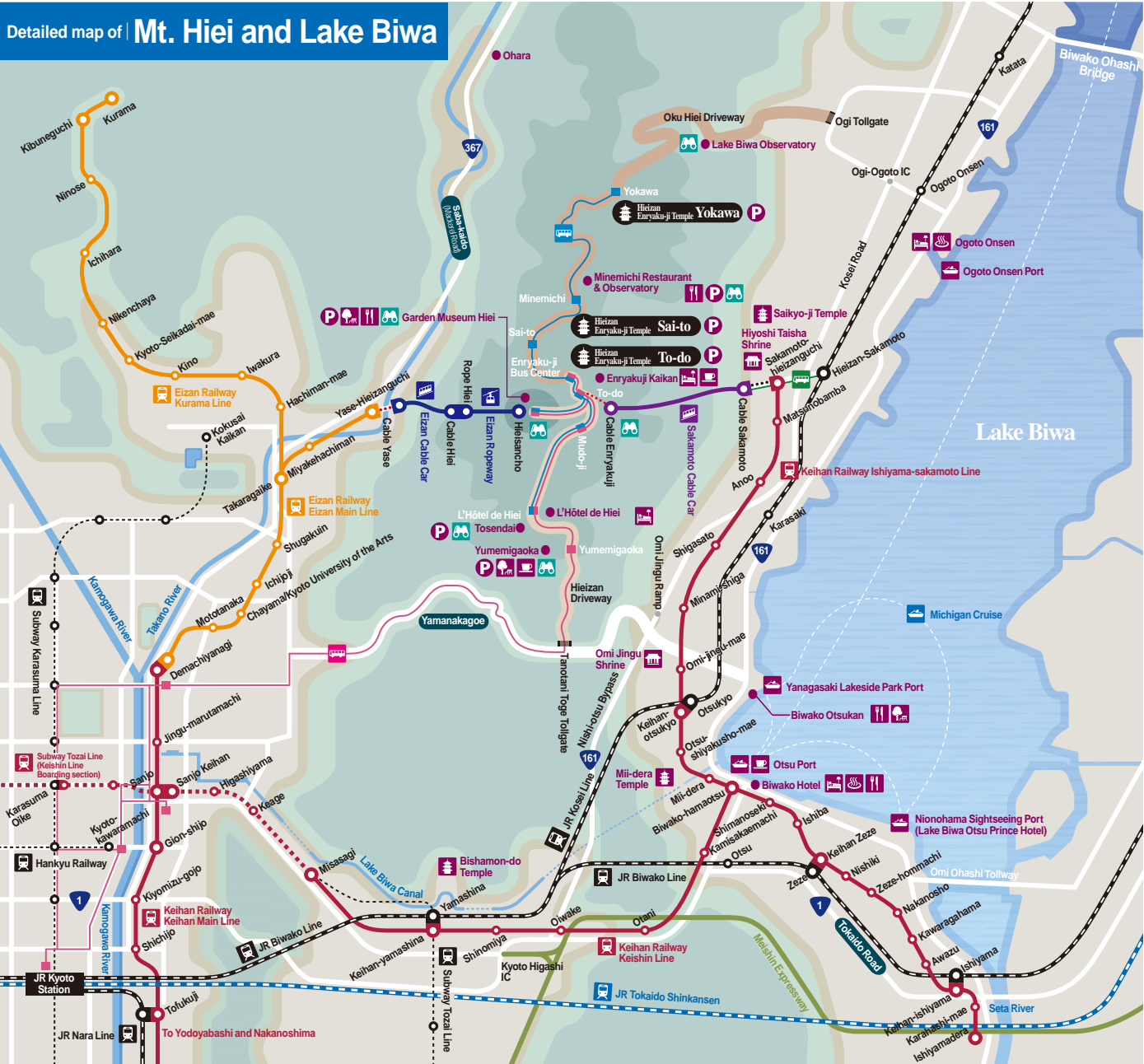
Admission

	April 19 to November 24	Other periods
Adult (junior high school students and above)	1,200 yen	600 yen
Child (elementary school students)	600 yen	300 yen

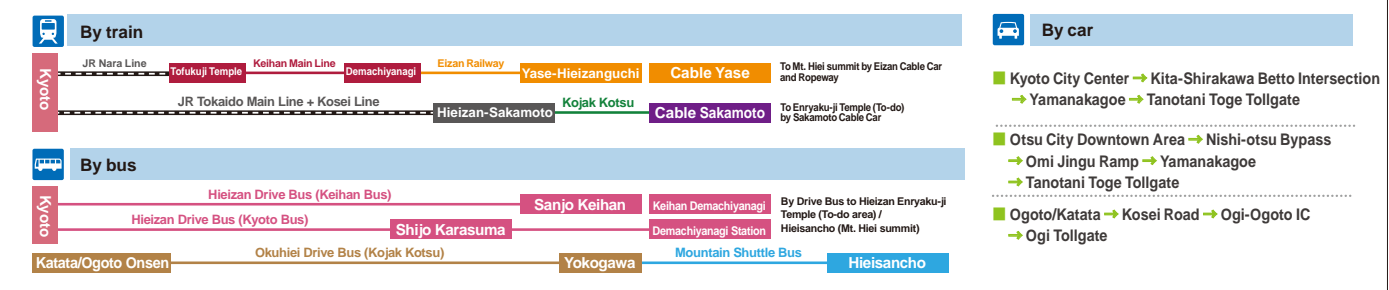
Group admission

		Apr. 19 to Nov. 24	Other periods
Groups 20+	Adult	1,080 yen	540 yen
	Elementary school student	540 yen	270 yen
Groups 100+	Adult	960 yen	480 yen
	Elementary school student	480 yen	240 yen

Detailed map of Mt. Hiei and Lake Biwa



Access to Mt. Hiei





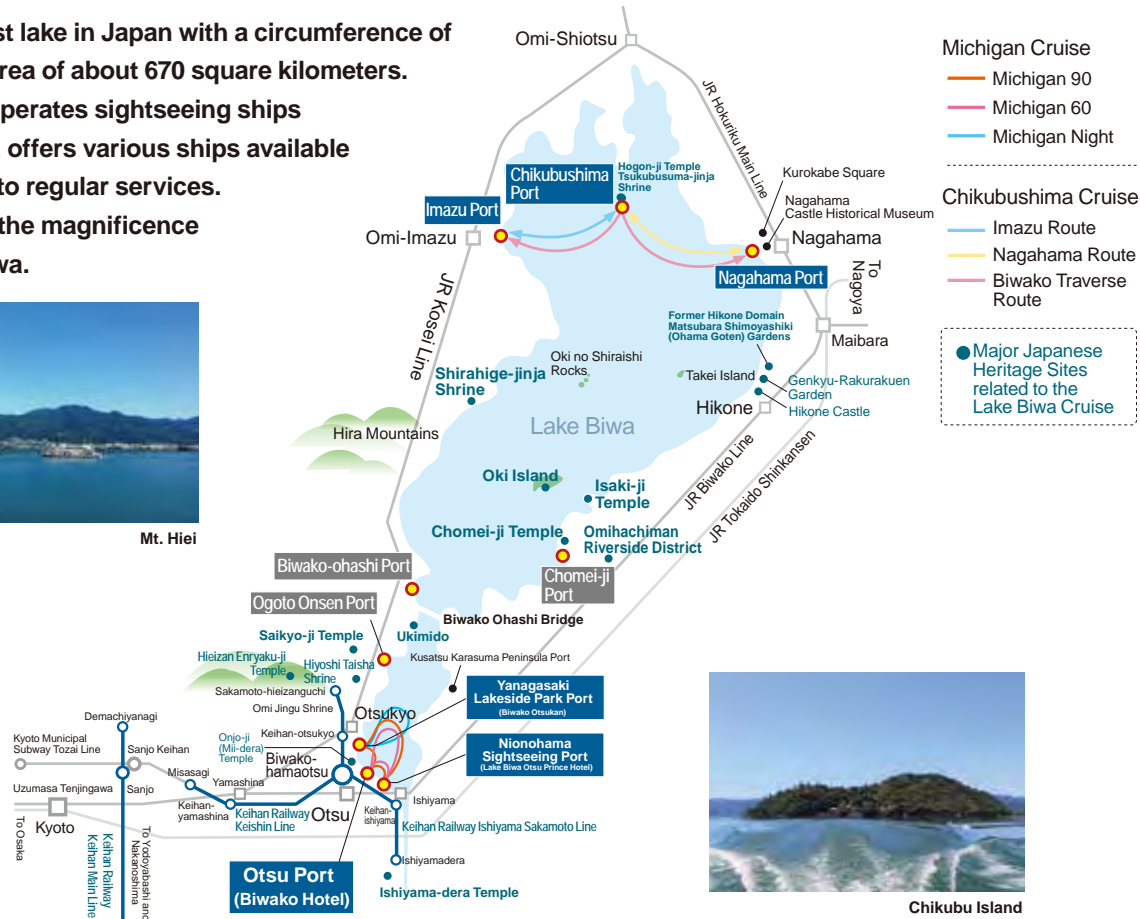
# Biwako Kisen

Lake Biwa is the largest lake in Japan with a circumference of about 235 km and an area of about 670 square kilometers.

Biwako Kisen, which operates sightseeing ships throughout Lake Biwa, offers various ships available for charter in addition to regular services. Come and experience the magnificence and beauty of Lake Biwa.



Mt. Hiei



Chikubu Island

## Michigan Cruise [Regular route]

Michigan is the most famous cruise ship on Lake Biwa. This entertainment cruise ship provides live shows and a variety of meals as well as a magnificent 360-degree view of Lake Biwa from the Skydeck on the top floor. You can choose from the Michigan 90, a 90-minute cruise where you can enjoy Lake Biwa during the daytime, the Michigan 60, a 60-minute cruise which is an easy way to enjoy Lake Biwa, and the Michigan Night, a cruise to enjoy the beautiful sunset and night view of Lake Biwa.

◎ Number of passengers: Max. 400 passengers for private use (or 150 for seated buffet style)



Michigan Length overall: 59.0 m, Gross tonnage: 1,045.61 t

Discount type	Number of passengers	Boarding fare (round-trip)	Discount rate	Conditions
General group	Groups 15+	Michigan 90 Adult: 3,200 yen Elementary school student: 1,600 yen	10% discount on boarding fares	
		Michigan 60 Adult: 2,600 yen Elementary school student: 1,300 yen		
School group	Groups 15+	Michigan Night Adult: 3,400 yen Elementary school student: 1,700 yen	Junior and senior high school students: 20% discount on adult price *1 Elementary school student 10% discount on elementary school student boarding fares	A certificate from the school principal is required.

- A group reservation can be made from one year in advance of the scheduled cruise date. (Individual reservation: from three months in advance)
- If you are having a lunch buffet or course dinner, separate meal fee will be required in addition to the boarding fare.
- The adult fee applies to junior high school students and above.

### Boarding point (Otsu Port)

About 3 min. on foot from Keihan Railway Biwako-hamaotsu Station.  
About 10 mins' drive from Meishin Otsu Interchange.  
It is also possible to board from other ports of call (Nionohama Sightseeing Port and Yanagasaki Lakeside Park Port)

\*1 Please inquire regarding prices from FY2026 onward.

## Chikubushima Cruise [Regular service]

Chikubushima has long been worshipped as an island where gods dwell and has also recently become famous as a spiritual place. On the small island with a circumference of 2 kilometers is the Hogon-ji Temple, the 30th temple of the Saigoku Kannon Pilgrimage, and the Tsukubusuma-jinja Shrine.

\*If you wish to visit them when on Chikubu Island, the admission fee is 600 yen for adults and 300 yen for children. (Adult fee applies to junior high school students and above) (As of January 2025)



Discount type	Number of passengers	Boarding fare	Discount rate	Conditions
General group	Groups 15+	[Nagahama Route] Arrival and departure from Nagahama Port Adult: 3,600 yen Elementary school student: 1,800 yen	10% discount on boarding fares	
		[Imazu Route] Arrival and departure from Imazu Port Adult: 3,200 yen Elementary school student: 1,600 yen		
School group	Groups 15+	[Biwako Traverse Route] Between Imazu Port and Nagahama Port Adult: 3,400 yen Elementary school student: 1,700 yen	Junior and senior high school students: 20% discount on adult price Elementary school student 10% discount on elementary school student boarding fares	A certificate from the school principal is required.

- A group reservation can be made from one year in advance of the scheduled cruise date. (Individual reservation: from three months in advance)
- The adult fee applies to junior high school students and above.

### Boarding point (Nagahama Port)

About 10 min. on foot from JR Hokuriku Main Line Nagahama Station  
About 15 mins' drive from Hokuriku Expressway Nagahama Interchange (Large vehicles/please get in contact in advance)

### (Imazu Port)

About 5 min. on foot from JR Kosei Line Omi-Imazu Station  
(Parking lots for large buses and free parking lots are available)

## Chartered cruise (Environmental study cruise)

Ideal for field trips and company study trips. We offer programs to learn about the water environment of Lake Biwa.

◎ Number of passengers: 40 to 80 \*We are operating with a maximum of 80 passengers currently. Fare: Please contact us.



High-Speed Ship "Megumi" Length overall: 35.9 m, Gross tonnage: 122 t

## Chartered cruise (Party cruise)

Special hospitality that you will only find on the lake county of Shiga. We offer memorable parties.

◎ Number of passengers: 80 to 250 (or 400 in the case of boarding only) Fare: Please contact us.



The largest cruise ship on Lake Biwa "Bianca"  
Length overall: 66.0 m, Gross tonnage: 1,216.0 t

- Michigan Chartering (Michigan Night) Plans are also available.
- We also offer tours of islands and other routes using a chartered high-speed ship.
- Please consult with us if you wish to depart or arrive at ports other than Otsu Port.



# Osaka Aqua Bus

A completely new way of seeing Osaka.  
Take an urban cruise around Osaka, city of water.  
We offer five different cruise ships for memorable sightseeing in Osaka, including the Aqua Liner that tours Osaka Castle and Nakanoshima, Himawari where you can also enjoy a meal, and Santa Maria that tours Osaka Port.



Aqua Liner



Santa Maria

## Aqua Liner

A classic Osaka waterside cruise around Osaka Castle and Nakanoshima.  
From just above the water's surface, passengers can take in views of central Osaka's cityscape, historic sites, seasonal scenery, and the everyday life of the people who live there. Tickets are available for sections of the cruise, making it a great transport option for sightseeing.

### Route map



### Boarding fare

**Round-trip route:** about 55 min. Adult: 2,000 yen, Child (elementary school students): 1,000 yen

**Section Travel:** about 25 min. Adult: 1,500 yen, Child (elementary school students): 750 yen

Fares and routes will differ during the special spring period (March 25 to April 10).

Discount type	Discount rate	Conditions
Group discount	10% discount	Groups 15+ (aged 1 or over)
Elementary school group discount	20% discount	School groups 15+ (a certificate from the school principal is required)
Junior high school, senior high school, and university group discount	40% discount	

Operates year-round except for the days indicated on the right. (Non-operating dates: all departures in the afternoon of July 25, two weekdays per week in January and February, other days as needed)

**Boarding point (Osaka Castle Port)** / train: Approx. 3 min. on foot from Osakajoko Station on the JR Osaka Loop Line

**Boarding point (Hachikenya Boat Dock)** / train: A short walk from Temmabashi Station on Keihan Railway or Osaka Metro Tanimachi Line

**Chartered cruise** We will provide boxed lunches, a variety of beverages, and other items according to your budget.

1 ship, cruise of about 50 minutes

**Charter fee** From 153,000 yen

\*Fares will differ during the special spring period (March 25 to April 10).

Nakanoshima Circle Route is also available.

Only for chartered cruise. Please note that the ship may not be able to operate due to the tidal level and other reasons. Please contact us for details. (Not available from late March to mid April)

### Reservation

-Individual reservation can be made from two months in advance, and group reservation from three months in advance.

\*Please note that the service may be canceled or the route may be changed for safety reasons due to weather and river conditions.

\*Please note that details of cruises may change due to special event cruises and other reasons.

\*Beverages and other items are available for purchase at the on-board store. (In principle, no outside food and drinks are allowed on the ship.)

\*Please see the website for the latest schedule information.

\*The route may be changed in spring.

## Santa Maria

Modelled after La Santa Maria, flagship of Columbus which reached the new world, it is built to be about twice as large.  
In this relaxing cruise that takes you around the Osaka bay area, you can enjoy a magnificent view from the sea.



### Boarding fare

**Day Cruise (Osaka Port Tour)** About 45 min.

Adult: 1,800 yen,

Child (elementary school students): 900 yen

Discount type	Discount rate	Terms and Conditions
Group discount	10%	Groups 15+ (aged 1 or over)
Elementary school group discount	20%	School groups 15+ (a certificate from the school principal is required)
Junior high school, senior high school, and university group discount	40%	School groups 15+ (a certificate from the school principal is required)

Operate year-round except for the days specified below: Non-operating days:

All days from Mid January to early February, specified non-operating days in February, and other days specified as needed

\*Please see the website for the schedule.

### Boarding point (Kaiyukan West Pier)

- By train: About 10 min. on foot from Osakako Station on Osaka Metro Chuo Line

- By car: About 5 min. from Tempozan Interchange on the Route 16 Osaka Port Line. 1,300 parking spaces available (paid parking of Osaka Aquarium Kaiyukan)

- One infant per adult can be admitted for free. Any infants in excess of the number of adults will be charged a child fare.

- Please note that the service may be canceled for safety reasons due to weather and nautical conditions.

### Common points for Aqua Liner and Santa Maria

#### Boarding fare for children

- Elementary school students.
- Children aged 1 or over who are not yet enrolled in elementary school, and are not accompanied by an adult or are on-board as a group.
- Children aged 1 or over who are not yet enrolled in elementary school and are accompanied by an adult, but exceeding one child per adult.

\*One infant who sits on the lap of an adult is free.

#### Cancellation fee

- \*No refund will be made after the departure of your cruise.
- 200 yen per cancellation up to seven days prior to departure
- 10% of the face value of the ticket up to two days prior to departure
- 30% of the face value of the ticket up to before departure

\*Multiple discounts cannot be used together.

\*Conditions are different for restaurant plans and chartered ships. (Please contact us for details.)

## Himawari (charter plan)

This is a particularly elegant cruise ship in the water city of Osaka, built based on the river steamboats that criss-crossed the Yodo River in the Meiji Era. We provide casual meals to full-course meals on the chartered cruise according to your budget and request.



### Boarding fare (for cruise only)

Cruise time	Capacity	Private rental fee (incl. tax)
Less than 50 mins.	Max. 102 (incl. standing. Max. seats: 64)	112,500 yen
Less than 100 mins.	Max. 64	171,000 yen
Less than 120 mins.	Max. 64	216,000 yen

★Custom lunch box meals can be provided.  
From 1,050 yen per person (lunch box/tea)  
Himawari's operation hours are between 11:00 (departure) and 21:00 (arrival).

\*In Spring, only the cruises departing at 19:00 and 19:30 from and arriving at Hachikenya Pier can be booked out.

Boarding point (Hachikenya Boat Dock) - By train: A short walk from Temmabashi Station on Keihan Railway or Osaka Metro Tanimachi Line



# Hirakata Park

Hirakata Park (commonly known as Hirapar) is an amusement park that everyone from small children to adults can enjoy all year round, offering roughly 35 different attractions and events, as well as swimming pools in summer; and illuminations, skate rinks, and a snow play area in winter.

## Spring

The most colorful and gorgeous season of the year for the park. Roses in the Rose Garden and a variety of other flowers will be in full bloom.



## Autumn

Fall roses and seasonal flowers bring color to the park. The popular annual illumination event also gets underway.



## Illuminations

### Amusement Park of Light

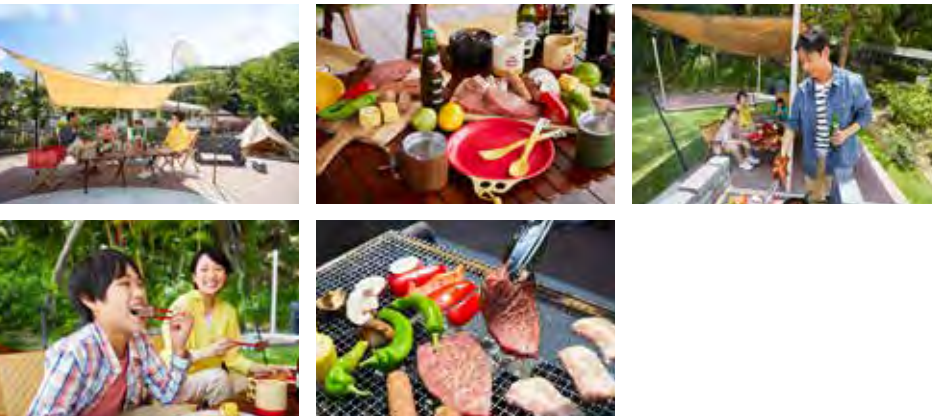
Illumination events with elaborate lights shine year after year. As well as the beauty of the illuminated attractions, it gives you a unique experience of viewing the illuminated areas from the attractions of an amusement park!



## Outdoor BBQ Terrace

Enjoy a little slice of luxury with a BBQ featuring carefully selected Wagyu beef and more in a private rental space. Guests are free to come and go from their space, and can spend their time in any way they please until 16:00.

\*Reservations must be made at least two days in advance \*Reservations for up to 100 (in two groups) are accepted, providing they are made at least 10 days in advance



## Various events

Our event hall mainly features large exhibition-style events, while heroes and heroines from popular TV shows often visit our outdoor stage.



## Group admission

We offer a group admission fee, which is more economical than the regular admission fee, for groups of 25 or more.

\*Fees listed are for one person. \*Children under two years of age are free of charge. \*Please make a request in advance for group use. \*The following plans may not be available due to various circumstances.

### Admission

	Groups 25+	Groups 50+	Groups 100+
Adult (junior high school students and above)	1,600 yen	1,440 yen	1,260 yen
Child (2 years of age to elementary school students)	900 yen	800 yen	700 yen

### Admission + All Access Pass

	Groups 25+	Groups 50+	Groups 100+
Adult (junior high school students and above)	4,600 yen	4,440 yen	4,260 yen
Elementary school student	3,900 yen	3,800 yen	3,700 yen
2 years old to preschooler	2,700 yen	2,600 yen	2,500 yen

### Inquiries and bookings

0570-016-855

### Opening hours: During Hirakata Park opening hours

- \* Group tickets are purchased and issued at group reception (next to main gate ticket sales point).
- \* Groups of 24 persons or fewer cannot benefit from group fees.
- \* Group fees are available only when purchasing all tickets together and entering at the same time.

Inquiries and bookings for group photos  
072-840-8771 (Uchiyama Photo Studio)

## Block reservation plan

Block reservations of Hirakata Park can be made on days when the park is closed or outside opening hours. We can offer the best plan for your budget and group size, be it for a shooting location, a school reunion in the amusement park, or corporate recreation. Please contact us and speak to our rental staff for details.

## Access

- From Osaka direction
  - Hanshin Expressway ...Approx. 9km from Moriguchi Route Terminus
  - Kinki Expressway ...Leave Settsu-minami Interchange, cross Torikai-chashi Bridge and turn left
  - Dainikeihan Road ...Leave Neyagawa-minami Interchange, turn left onto National Route 170, then turn right at the Ishizu Motomachi intersection
- From Kyoto direction
  - Dainikeihan Road ...Leave Katano-kita Interchange, turn right onto National Route 168, then turn left after approx. 3km

Please see the website for a detailed route

If you are using a satellite navigation system, search using the map code.  
If you are unable to enter the map code, please see the map of surrounding roads (on the right).

Map code (parking lots 1 and 3): 11 782 191

### Parking fee (vehicle/day)

- Ordinary car: 2,000 yen
- Bus/microbus: 4,000 yen
- Motorcycle: Free of charge

\* Special parking fees apply on particular dates.  
\* These dates will be announced on the website as soon as they are fixed.  
\* Parking lots 1 and 3 may not be available depending on circumstances.  
\* When visiting by bus or minibus, please reserve in advance.  
\* Please use parking lot 2 (free of charge) for motorcycle parking.  
\* There is a parking lot for bicycles (free of charge) next to the main gate.  
\* There is also a parking space for persons with disabilities, so please ask our staff.

\* All prices are shown including tax. \* Some facilities and events are not covered by the all access pass. \* The all access pass does not provide entry to the pool or the Winter Carnival (skate area/snow area). \* Fees are required for viewing or participating in some events. \* Fees are required when using attractions. \* There are height and age restrictions for attractions. \* Last entry to the park is 30 minutes before closing. \* Photographs are not current. \* Information is current as of February 1, 2024. Please note that changes or cancellations may be made without prior notification.



In some situations, the park may be closed on the days and times of opening may be changed without prior notification.



# Nidec Kyoto Tower

Landmark encapsulating the full sense of Kyoto, including an observation deck looking out over Kyoto from 100 meters above ground as well as Kyoto Tower Sando at the bottom of the tower, which features famous and popular Kyoto stores.

## Access

- By train**    ◎ Approx. 2 min. on foot from JR Kyoto Station Central Exit
- By plane**    ◎ From Osaka International Airport: Approx. 65 min. (Airport Limousine Bus) → JR Kyoto Sta. Hachijoguchi Exit → Approx. 10 min. on foot  
                  ◎ From Kansai International Airport: Approx. 80 min. (JR Kansai-Airport Express "Haruka") → JR Kyoto Sta. → Approx. 2 min. on foot
- By car**        ◎ Approx. 20 min. from Kyoto-minami Interchange or Kyoto-higashi Interchange on the Meishin Expressway
- Nearby tourist attractions    ◎ Higashi Hongan-ji Temple (approx. 5 min. on foot) ◎ Nishi Hongan-ji Temple (approx. 15 min. on foot)  
  ◎ Sanjusangen-do Temple (approx. 5 min. by bus) ◎ Kyoto National Museum (approx. 5 min. by bus)  
  ◎ To-ji Temple (approx. 2 min. by train or 5 min. on foot)



## Nidec Kyoto Tower Observation Deck (Nidec Kyoto Tower, 11F [Entrance])



Kyoto's tallest tower, standing at 100 meters, has an observation deck providing 360-degree views of the metropolitan areas of Kyoto, the ancient capital of Japan, surrounded by three mountains of Kyoto. Here you can experience everything Kyoto has to offer, with views that change completely depending on the time and season.

Opening hours	10:00-21:00 (last admission 20:30) *Opening hours are subject to change without prior notice.	
Tickets: Individual	[Adult] 900 yen	[Elementary/junior high school student] 600 yen
	[High school student] 700 yen	[Child(3years old over)] 200 yen
Tickets: Group (20 or more persons)	[Adult] 700 yen (per person)	
	[High school student] 550 yen (per person) [Elementary/junior high school student] 450 yen (per person) *Payment in full only *Group fees do not apply to mixed groups of 20 people of adults, high school students, and elementary/junior high school students.	



## Telescope

Look through the telescope installed on the 5th floor observation deck to see famous Kyoto spots from 100 meters above ground. As well as historical sites, you can see as far as Osaka on a clear day. Enjoy scenery that can only be experienced from Nidec Kyoto Tower.



## Sky Lounge "KUU"

The interior, brought together by its chic lighting, is an adult atmosphere space. With counter seating, couples seating, box seating, and table seating, it can cater to all scenarios. Or hire out the entire venue as the perfect place for banquets or wedding after-parties.

- Location**  
3F, Observation Deck, Nidec Kyoto Tower
- Opening hours**  
Weekdays: 17:00 – 23:00 (last orders: 22:30)  
Weekends, public holidays: 14:00 – 23:00 (last orders: 22:30)
- \*The entire lounge is non-smoking.  
\*A charge will apply for entry after 18:00 (400 yen per person).



## Kyoto Tower Sando (Kyoto Tower Building, 2F-B1F)



Kyoto Tower Sando is a commercial zone in Kyoto Tower Building in front of Kyoto Station. It is a combination of food hall, market and workshop, featuring 42 of Kyoto's famous and popular stores. You can also find compositions by the poet Tahi Saihate as pieces of public art around Kyoto Tower Sando.

You can also ask about joint sales promotions with travel agencies such as meal coupons, etc.

Opening hours	B1F / 11:00 - 23:00	*Hours may vary by store. *Opening hours are subject to change.
	1F / 10:00 - 21:00	
	2F / 10:00 - 19:00	

\*All photos are for illustrative purposes only.

## 2F WORKSHOP

Experience traditional Japanese culture **Also open to groups**



### Shichijo Kanshundo

Experience making seasonal fine Japanese confectionery called jonamagashi at the Shichijokanshundo store. You can make 4 sweets, enjoying one right there with a cup of matcha tea and taking the remaining 3 away as souvenirs. Open 4 times a day.

- Times and fees: Approx. 60-90 min., 3,300 yen  
\*Same-day booking accepted

■ Seating capacity: Up to 42 persons



### Daiki Suisan Sushi Seminar (sushi-making workshop)

Sushi masters kindly teach you while showing examples, so even beginners, children and visitors from afar can enjoy participating. There are three options available: 3,000 yen for 8 pieces, 3,500 yen for 10 pieces, and 4,000 yen for 12 pieces.

- Times and fees: 90 min. per session, from 3,000 yen  
\*Booking must be made by 12:00 the previous day

■ Seating capacity: Up to 24 persons

\*Bookings must be for a minimum of four persons.

\*Can be arranged to start any time between 11 am and 6 pm



### Kyoto Kimono Rental wargo

Dress in kimono at reasonable prices starting from 3,300 yen, choosing from a vast collection ranging from highly popular antique designs to gorgeously patterned kimono. Dressing, accessories and hairpins are all free of charge, so just bring yourself.

- Fees: From 3,300 yen

You can come to the store and book on the day if there are openings!

\*Priority is given to customers who have reservations.  
There may be some waiting time depending on reservations.



### Akaneya (traditional handicraft experience workshop)

Experience ceramic painting of Kiyomizu ware teacups, mugs, folding fans, ceramic bells and glass wind chimes, etc., and making rosaries connecting colorful natural rocks. Ceramic bells, glass wind chimes and rosaries can be taken away on the day, while other items will be sent at a later date.

- Times and fees: Approx. 60 min., from 1,200 yen

■ Seating capacity: Max. 42 people

## 1F MARKET

Kyoto's finest souvenirs in one place

This floor features a range of superb products from Kyoto, including local Japanese and Western-style sweets, pickles, and cafe items.

From typical Kyoto souvenirs to those that are exclusive to Kyoto Tower Sando,

this may be the only place around Kyoto Station where you can find some of those items.

◎Number of stores: Approx. 20 stores (Otabe Kyobau, Ochanokosaisai, Malebranche Kyoto Kitayama, Masuya Seika, etc.)



## B1F FOOD HALL

Enjoy Kyoto cuisine

### A food hall where you can walk around and enjoy tastes of Kyoto

Renowned local stores and much-talked about popular stores are found here, making the area ideal for everything from lunch to dinner and cafes to bars. There are approximately 450 seats across the floor, ensuring plenty of space for visitors to the Kyoto Station area.

You can enjoy a wide range of food from several outlets together with alcoholic beverages.

There are also vegan and vegetarian options to enjoy.

◎Number of stores: Approx. 18 stores (KYOTO TOWER SANDO Bar, Hiro Kyoto Yakiniku Restaurant, Gyozaadokoro Sukemasa, PANCAKE ROOM, etc.)

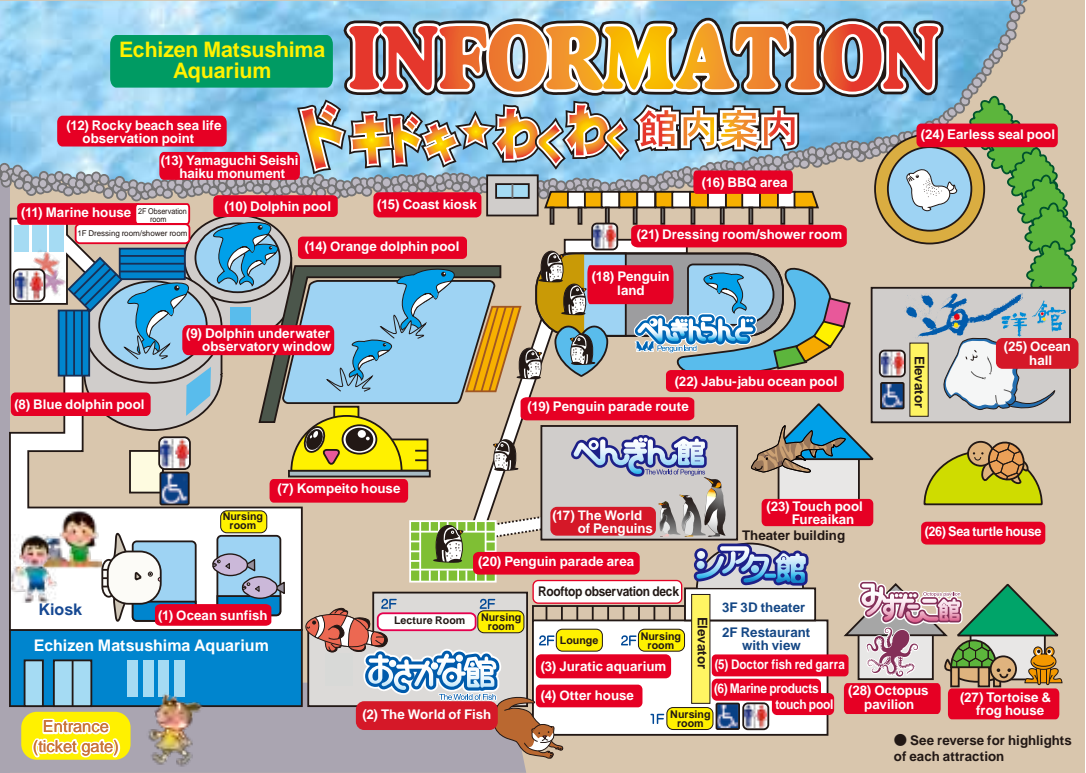




# Echizen Matsushima Aquarium

Enjoy hands-on learning at Echizen Matsushima Aquarium.  
This aquarium is located in the Echizen-Kaga Kaigan Quasi-National Park in Sakai City, Fukui Prefecture, on the Sea of Japan.  
It also features restaurants with unbroken views of the Sea of Japan and souvenir shops selling aquarium goods.

## Aquarium map



## Octopus pavilion



Six tanks of differing sizes are embedded in the legs of a giant octopus, enabling anyone to get up close and personal with a massive octopus.

## Attractions

### Dolphin show



A dynamic, enjoyable dolphin show featuring bottlenose dolphins.

## Ocean hall

### Sea of coral



A relaxation floor where the water surface is covered by a transparent acrylic board. Please take your shoes off before entering. Enjoy a dream experience of floating on the sea surface.

### Large ocean tank



Large fish such as sea rays and sharks, and a school of approximately 3,000 sardines are on show.

### Penguin parade time



Watch the penguins' movements up-close. Take photos as you please.

### Otters' dinnertime



Watch cute otters being fed their dinner.

## Hands-on & feeding experiences

### Jabu-jabu ocean pool



Enjoy swimming with fish and feeding them in this pool.

### Touch pool Fureaikan



Encounter creatures with the sense of touch, including real shark skin and the surface of a ray.

### Marine products touch pool



You can touch Echizen crabs, spiny lobsters, eels and more, and feed Japanese sea bream and black rockfish, etc.

### Feeding experiences



Enjoy feeding sea turtles in the sea turtle pool. There is also an area for feeding tortoises and fish.

### Play with earless seals



You can touch earless seals while listening to various explanations from aquarium staff.

### Doctor fish red garra



Get your hands cleaned by the ticklish but pleasant doctor fish.

## Fees

### General fees (consumption tax included)

	Adult	Elementary and junior high school student	Child (aged 3 or over)	Infant (under 3)
General	2,200 yen	1,200 yen	600 yen	—
Groups (20+)	1,980 yen	1,080 yen	540 yen	—
Groups (100+)	1,760 yen	960 yen	480 yen	—

### Annual Passport fee (consumption tax included)

	Adult	Elementary and junior high school student	Child (aged 3 or over)	Infant (under 3)
General	5,500 yen	3,000 yen	1,500 yen	—

### "Octopass" Premium Annual Passport (consumption tax included)

30,000 yen
------------

### Special fee (consumption tax included)

	Adult	Elementary and junior high school student	Child (aged 3 or over)	Infant (under 3)
Field trips (school groups)	1,400 yen	700 yen	350 yen	—
Facilities for disabled persons / welfare facilities for elderly persons	1,100 yen	600 yen	300 yen	—
Persons with a certificate of disability	—	—	—	—

### Advance purchase bulk discount tickets (12 tickets) (consumption tax included)

Adult	Child: For elementary and junior high school students	Infants: For children aged 3 and over
22,000 yen	12,000 yen	6,000 yen

### Night block reservation plan (consumption tax included)

150,000 yen
-------------

\*Separate fee of 50,000 yen (incl. consumption tax) applies for dolphin show  
\*See website for details.

## Access



### Public transport (plane/train/bus)

- From Ishikawa Prefecture/Komatsu Airport  
Approx. 60 min. by rental car ... Approx. 30 min. in direction of Kaga Interchange on National Route No. 8  
→ Approx. 30 min. via National Route 305
- From Awarasens Station on JR Hokuriku Main Line Keifuku Bus: Approx. 30 min. in direction of Tojinbo  
... Right next to Echizen Matsushima Aquarium-mae bus stop
- From Fukui Station on JR Hokuriku Main Line  
Echizen Railway: Approx. 40 min. to Awa-Yunomachi Station on Mikuni Awa Line → Approx. 15 min. after bus transfer
- From Kanazawa Station on Hokuriku Shinkansen Approx. 35 min. to Awarasens Station → Approx. 30 min. after bus transfer
- From Kanazawa Station on Hokuriku Shinkansen  
Approx. 60 min. by rental car (when using expressway)  
... Approx. 10 min. from Kanazawa Station to Kanazawa-nishi Interchange on the Hokuriku Expressway →  
Approx. 25 min. from Kanazawa-nishi Interchange to Kaga Interchange → Approx. 25 min. via National Route 305

### By car

- Approx. 20 min. from Kanazawa Interchange on the Hokuriku Expressway in the direction of Tojinbo
- Approx. 25 min. from Kaga Interchange on the Hokuriku Expressway in the direction of Tojinbo via National Route 305
- Approx. 25 min. from Kanazawa-nishi Interchange on the Hokuriku Expressway to Kaga Interchange  
→ Approx. 25 min. via National Route 305

\*Parking lot is available. Parking lot capacity: 450 spaces (free of charge) \*Free shuttle bus operates from nearby provisional parking lot during busy season.



# Kuzuha Golf Links

Renovated and reopened in 2019.  
Enjoy a full golf course just 2 minutes away from Kuzuha Station.  
Reasonably priced and convenient for access from Osaka,  
Kyoto and Shiga!  
Golf carts can also be driven on fairways!

- Access
- By train ○ Alight at Keihan Railway Kuzuha Station and walk for approx. 2 min.  
By car ○ Approx. 10 min. from Oyamazaki Interchange on the Meishin Expressway  
Approx. 10 min. from Kumiya Yodo Interchange on the Keiji Bypass  
Approx. 15 min. from Kyotanabe Matsui Interchange on the Dainikeihan Road

## Fees

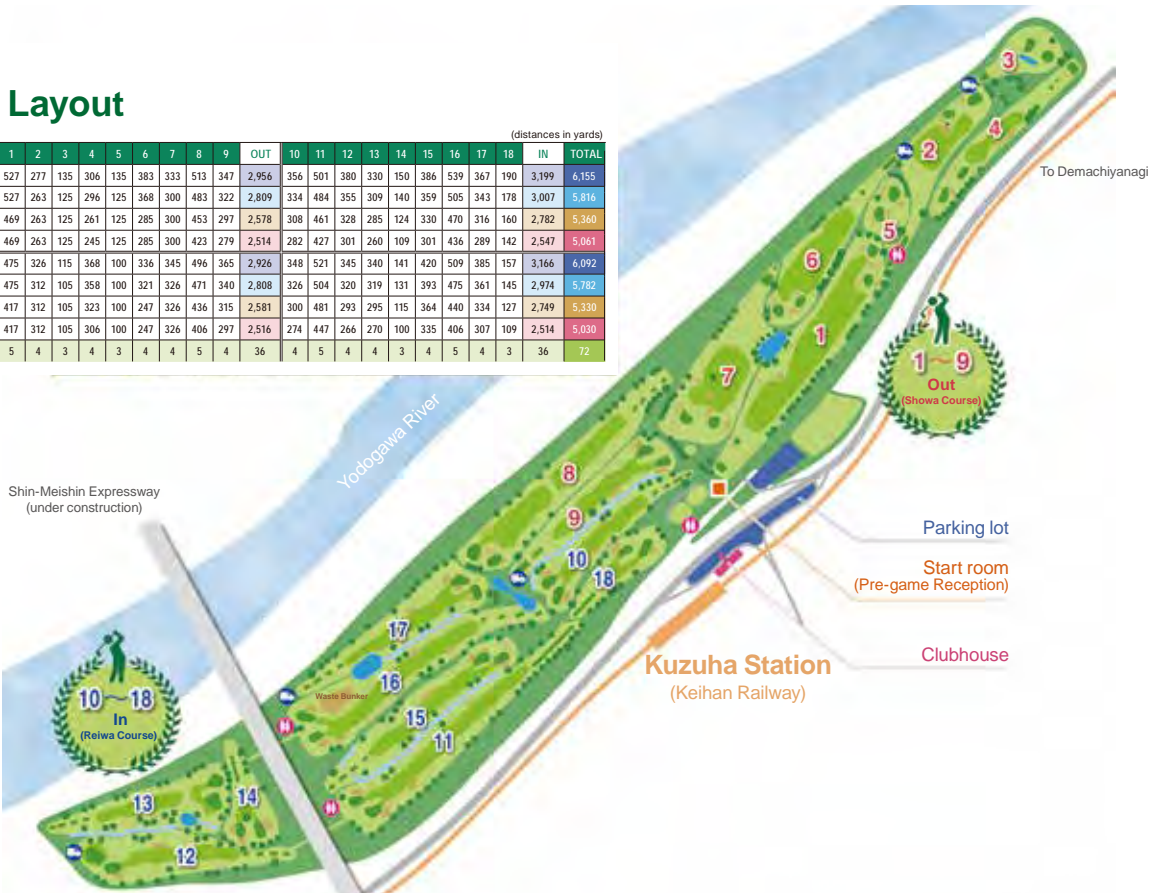
18-hole play (including lunch, golf cart, tax, etc.)	
Weekdays	Saturdays, Sundays and holidays
From 7,100 yen	From 9,300 yen

\* Please see the official website for more information.

## Course Layout

### Course Layout

HOLE		1	2	3	4	5	6	7	8	9	OUT	10	11	12	13	14	15	16	17	18	IN	TOTAL
KORAI	BACK	527	277	135	306	135	383	333	513	347	2,956	356	501	380	330	150	386	539	367	190	3,199	6,155
	REGULAR	527	263	125	296	125	368	300	483	322	2,809	334	484	355	309	140	359	505	343	178	3,007	5,816
	GOLD	469	263	125	261	125	285	300	453	297	2,578	308	461	328	285	124	330	470	316	160	2,782	5,360
TIFTON	LADIE'S	469	263	125	245	125	285	300	423	279	2,514	282	427	301	260	109	301	436	289	142	2,547	5,061
	BACK	475	326	115	368	100	336	345	496	365	2,926	348	521	345	340	141	420	509	385	157	3,166	6,092
	REGULAR	475	312	105	358	100	321	326	471	340	2,808	326	504	320	319	131	393	475	361	145	2,974	5,782
PAR	GOLD	417	312	105	323	100	247	326	436	315	2,581	300	481	293	295	115	364	440	334	127	2,749	5,330
	LADIE'S	417	312	105	306	100	247	326	406	297	2,516	274	447	266	270	100	335	406	307	109	2,514	5,030
	PAR	5	4	3	4	3	4	4	5	4	36	4	5	4	4	3	4	5	4	3	36	72



## Facilities



Restaurant



Ladies' powder room/dressing room



Men's bathroom



Reception room

# OMM

Conveniently linked to the railway station via an underground passage, this building is a Temmabashi landmark and hosts tenants, exhibition halls, conference rooms, rental offices, and more, as well as offering diversity and convenience.



## Exhibition halls/conference rooms

### 2F/B1F exhibition halls

There are a range of large and small exhibition halls, with 12 on the 2nd floor and one in the basement. The halls on the 2nd floor can be linked together, meaning that as well as for exhibitions and sales, they can also be used for a range of other purposes such as large seminars.



Hall B



Hall G/G2

### 2F Conference rooms

The dedicated conference room floor is reached by stairs from the second floor, and is equipped with a total of seven conference rooms. They are separate from other floors, which offers a sense of tranquility during use.



201



207

## Service Office

### 1F Service Office W Temmabashi

A spacious business lounge with dedicated private rooms to ensure privacy and a ceiling height in excess of 3.5 m as well as the furniture and equipment required for business and a staffed reception service.



Exterior



Business lounge

### 1F Glan

The airy, high-grade venue Glan, with a ceiling height of 3.6 m, is located close to the front entrance to the building on the first floor. Praised for its ease of loading and unloading, it can also be used as an exhibition space as well as a conference room.



Glan 101 & 102



Glan

Conference room prices



## Dining, stores, and services

### B2F

25 eateries offer ample opportunity for a culinary adventure.



Tsurumaru udon honpo



Freshness Burger

### B1F

Establishments on this floor include a pharmacy, beauty parlor, relaxation facilities, and a post office.



Sakura Pharmacy Osaka Temmabashi Station Store



Raffine

## Access



○ Passage to OMM B2F from Keihan Temmabashi Station east exit and Osaka Metro Tanimachi Line north ticket gates

\* Direct access to OMM B2F from Temmabashi Station Exit 1 on the Osaka Metro Tanimachi Line

○ You can also get to OMM from your nearest expressway, and parking lots are available.

- Parking lot 1 (140 spaces (approx.)) ¥400/20 min. all days  
Max. charge 8:00 - 22:00: ¥2,500 22:00 - 8:00: ¥1,200
- Parking lot 2 (86 spaces (approx.)) 8:00 - 22:00: ¥400/20 min. 22:00 - 8:00: ¥100/60 min.  
Max. charge: ¥2,500 (within 24 hours of entry)

\* The maximum charge is applied every 24 hours.

OMM Department, Keihan Tatemono Co., Ltd, 1-7-31 Otemae, Chuo-ku, Osaka 540-6591  
Tenant sales: Tel 06-6943-2011 Exhibition halls/conference room sales: Tel 06-6943-2020  
Service Office Officer TEL: 06-4792-8585





Keihan Department Stores

Moriguchi/Hirakata/Kyobashi/Kuzuha/Suminodo

Keihan operates five department stores in total, four along the Keihan Railway – three of them directly connected to the station (Moriguchishi Station, Hirakatashi Station and Kyobashi Station) and one in front of Kuzuha Station – and one right next to Suminodo Station on the JR Gakkentoshi Line.

Main cosmetics brands (Moriguchi Store): SHISEIDO, Clé de Peau Beauté, DECORTÉ, FANCL, SK-II, POLA, BeautyTamai (Albiona), Mama & kids, and more



Keihan City Mall

Directly connected to Temmouri. This convenient, compact and friendly mall features everything you need for a happy lifestyle, from an urban food market to popular fashions, daily necessities, books, home appliances and more.

Access: Rihi Station on Keihan Railway, Osaka Metro or Osaka City Bus

Main cosmetics stores: MiSUGI / SK-II, @cosme STORE / MiSUGI

(Shiseido, DECORTÉ, Global Kanebo, and more), Shop In

Main stores: Nitori, EDION, MUJI, Akachan Honpo, UNIQLO, GU, The Daiso, Seijo Ishii, Matsumoto Kiyoshi, and more.



Keihan Mall/K-Buratto/Kiki Kyobashi

Keihan also operates the Keihan Mall urban shopping facility that is directly connected to Kyobashi Station, the K-Buratto underpass shopping street with its many foodie spots, and Kiki Kyobashi, an integrated commercial that delivers value with rich variety.

Access: Right next to Kyobashi Station on Keihan Railway, Osaka Metro or JR Line

Main cosmetics brands: ALBION DRESSER, FANCL, M-A-C, MARKS & WEB, L'Occitane, etc.

Other stores: MUJI, 3COINS, Starbucks Coffee, fashion stores, restaurants, etc.



Hirakata Mall

Opened in September 2024 as a commercial area in the Station Hill Hirakata complex that boasts commercial facilities, office spaces, residences, hotels, and public organizations. It boasts roughly 90 stores including national and Kansai-first stores in fields such as fashion, cosmetics, gourmet food, interiors, and supermarkets.

Access: Right next to Keihan Railway Hirakatashi Station

Main cosmetics stores: Nanairo Beaute (CHANEL, Dior, Aesop, IPSA, SABON, and more),

BEAUTÉ de BLEUE (Albion, Decorté, Clé de Peau, ETVOS, OSAJI, and more)

Main stores: BEAUTY&YOUTH UNITED ARROWS, SLOBE I ENA, C-Smart (authorized Apple dealer), 3 COINS, Hands, TONDEMI Hirakata, Standard Products, Matsumoto Kiyoshi



Kuzuha Mall

This highly fashionable mall features a wide range of facilities including high-quality urban fashions and interiors, with everything ranging from outdoor goods to amusements. With approximately 230 specialist shops, Keihan Department Store, Aeon Food Style by Daiei, Izumiya, and the SANZEN-HIROBA Keihan Railway museum zone, this is the flagship of the Keihan Group.

Access: Right next to Keihan Railway Kuzuha Station

Main stores: UNITED ARROWS green label relaxing, URBAN RESEARCH DOORS, FREAK'S STORE, UNIQLO, ABC-MART Mega Stage, Toys"R"Us, TOHO Cinemas, EDION, Sports Depo/Alpen Outdoors, ZARA, Fruit GATHERING, MUJI, etc.



Good Nature Station

Based on the concept of being a place that brings together products and ideas that bring vibrancy to people and the planet, and offering only unbelievably good ingredients that are delicious, enjoyable, and trustworthy, GOOD NATURE STATION sells products including organic foodstuffs and cosmetics that use only naturally-derived ingredients. The GOOD NATURE approach to daily living is to incorporate healthy and good things in your own way while enjoying yourself instead of refraining.

► See P15 for details



Moyori-ichi Grocery (Keihan The Store)

This store aims to be convenient and the store of choice for the local community, and in addition to quality food such as daily foods prepared in-house, daiki sushi, and fine bread, its in-station stores offer "Rail Gourmet" that brings together appealing products from popular shops and hidden well-known stores along the Keihan Line.

Stores: Temmabashi Station, Kyobashi Station (inside and outside), Korien Station, Neyagawashi Station, Kuzuha Station, Gion-shijo Station, Sanjo Station, Sanjo Station Norengai, and in other locations



FREST (Keihan the Store)

FREST is a high-quality supermarket that provides fresh food products that set customers' minds at rest while striving for the highest standards.

Stores: Neyagawa, Temmabashi, Matsui-Yamate, Nagao, Korien



THE STORE (Keihan the Store)

The approach to daily living of this supermarket is to contribute to environmental conservation, the local economy, and the passing down of culture while incorporating healthy and good things in your own way while enjoying yourself.

Stores: Hirakata Mall Store



SWEETS BOX (Keihan the Store)

With the image of a confectionary box in a train station, the exclusive confectionary shop offers famous brands and limited-edition products from trending stores.

It offers an always-fresh lineup of products to bring a touch of indulgent joy to those who use the station every day.

Stores: Yodoyabashi, Panante Keihan Temmabashi, Kyobashi, Keihan Kuzuha, Gion-Shijo, (Stores: Kansai (12), Kanto (26), Tokai (2))



## Official Keihan Railway Accounts

Find information to get the best value at stores along Keihan Lines and from the Keihan Group!

### Japanese



Information for Exploring with Keihan Railways



Information for Exploring with Keihan Railways



Information for Exploring with Keihan Railways



Information for Exploring with Keihan Railways



### English



Keihan Electric Railway Co., Ltd.



keihan\_trip



### Chinese (traditional)



京阪電氣鐵道株式會社



### Chinese (simplified)



京阪铁道大阪京都之旅  
\* WeChat is accessible only through the app.



京阪铁道大阪京都之旅



京阪KEIHAN



► Read the QR code below for ticket reservations for experiential content accessible using Keihan Railways.

