

Company Outline

Corporate Data (as of March 31, 2009)

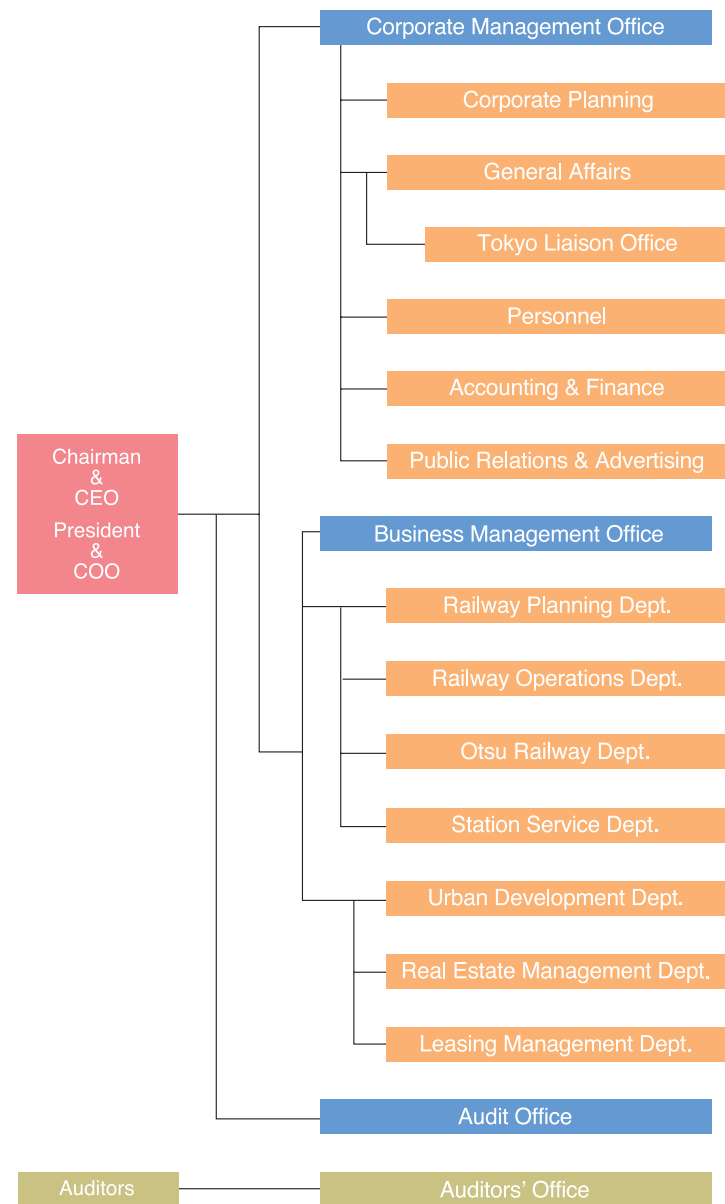
Date Established	Started: April 15, 1910 Founded: November 19, 1906
Capitalization	¥51,466,416,776
Number of Shares Authorized	1,595,886,000
Aggregate Number of Issued Shares	565,913,515
Number of Shareholders	58,443
Number of Employees	1,704

Location of Head Office	1-7-31 Otemae, Chuo-ku, Osaka, Japan
Main Business Segments	1. Railway (Passenger rail transport) 2. Real Estate Development (Sales and leasing of land and buildings) 3. Leisure Business (Amusement park management)
Length of Track in Service	91.1 km

Corporate Officers (as of July 1, 2009)

Chairman & CEO	Shigetaka Sato
President & COO	Seinosuke Ueda
Executive Vice President	Yoshitsugu Sakurai
Director & Managing Executive Officer	Masato Ogawa
Director & Managing Executive Officer	Yoshifumi Kato
Director & Managing Executive Officer	Hirokazu Waki
Director	Atsushi Takahashi
Director	Chiyono Terada
Managing Executive Officer	Toru Nishitani
Executive Officer	Tamotsu Nakai
Executive Officer	Hitoshi Tanaka
Executive Officer	Hiromu Shimojo
Executive Officer	Hiroyuki Mukai
Executive Officer	Hiroshi Nagai
Executive Officer	Yoshiji Suechika
Executive Officer	Tadashi Shiota
Executive Officer	Yasuo Kimura
Executive Officer	Tatsuya Miura
Executive Officer	Katsumi Tachikawa
Standing Auditor	Tsutomu Nakata
Standing Auditor	Takamasa Iseki
Auditor	Masanao Ichika
Auditor	Michitomo Ueno
Auditor	Kyozo Hayashi

Organizational Chart (as of July 1, 2009)



* In order to promote its growth strategy with greater vigor, Keihan Group introduced a new management system in June 2007. This system is focused on the CEO, who bears responsibility for the Group management strategy, and the COO, who bears responsibility for execution of the Group's businesses.

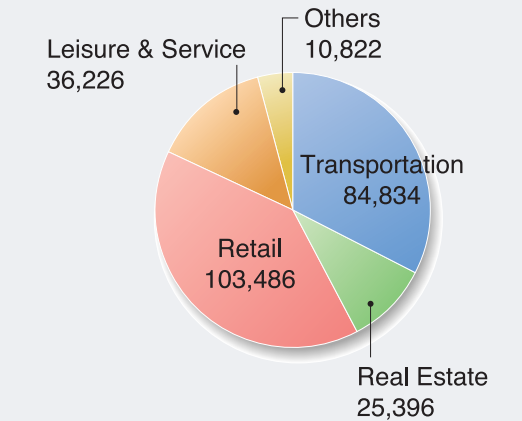
Companies of Keihan Group (As of Aug. 27, 2009)

Transportation	Retail
Eizan Electric Railway Co., Ltd.	Keihan Ryutsu Systems Co., Ltd.
Keifuku Electric Railroad Co., Ltd.	Keihan Department Stores Co., Ltd.
Keihan Engineering Service Co., Ltd.	Keihan Tomonokai Co., Ltd.
Keihan Leisure Service Co., Ltd.	Keihan The Store Co., Ltd.
Nakanoshima Rapid Railway Co., Ltd.	Keihan Restaurant Co., Ltd.
Keihan Station Management Co., Ltd.	Juicer Bar Corporation Co., Ltd.
Keihan Travel Service Co., Ltd.	Keihan Ever Nice Co., Ltd.
Keihan Agency Co., Ltd.	
Keihan Life Support Co., Ltd.	Leisure & Service
Keihan Bus Systems Co., Ltd.	Biwako Hotel Co., Ltd.
Keihan Bus Co., Ltd.	Biwako Hotel Service Co., Ltd.
Keihan City Bus Co., Ltd.	Hotel Keihan Co., Ltd.
Keihan Kyoto Kotsu Co., Ltd.	Keihan Urban Systems Co., Ltd.
Keihan Bus Service Co., Ltd.	Keihan Resort Systems Co., Ltd.
KB Enterprise Co., Ltd.	Kyoto Tower Co., Ltd.
Keihan Uji Bus Co., Ltd.	Biwako Kisen Steamship Co., Ltd.
Kojak Bus Co., Ltd.	Biwako Kisen Service Co., Ltd.
The Kojak Co., Ltd.	Biwako Kisen Restaurant Co., Ltd.
Kyoto Bus Co., Ltd.	Osaka Aqua Bus Co., Ltd.
KT Motors Co., Ltd.	The Mt. Hiei Cable-Car Co., Ltd.
Keihan Taxi Co., Ltd.	Kuzuha Public Golf Course Co., Ltd.
Shiga Keihan Taxi Co., Ltd.	The Mt. Hiei Driveway Co., Ltd.
Tsuruga Keihan Taxi Co., Ltd.	Garden Museum Hiei Co., Ltd.
Travel Keihan Co., Ltd.	
Uji Keihan Taxi Co., Ltd.	Others
Osaka Keihan Taxi Co., Ltd.	Osaka Merchandise Mart Corporation Co., Ltd.
Kisen Taxi Co., Ltd.	Keihan Business Management Co., Ltd.
	Keihan Financial Management Co., Ltd.
	Keihan Card Co., Ltd.
	Hachikenya Co., Ltd.
	Real Estate
Keihan Building Co., Ltd.	Keihan Condominium Service Co., Ltd.
Keihan Dentetsu Real Estate Co., Ltd.	Keihan Sangyo Co., Ltd.
Keihan Kanko Co., Ltd.	Kanko Co., Ltd.
Assistant Service for Cultural Assets Co., Ltd.	Keihan Gardening Co., Ltd.



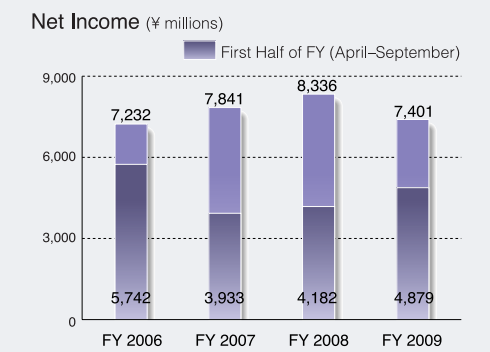
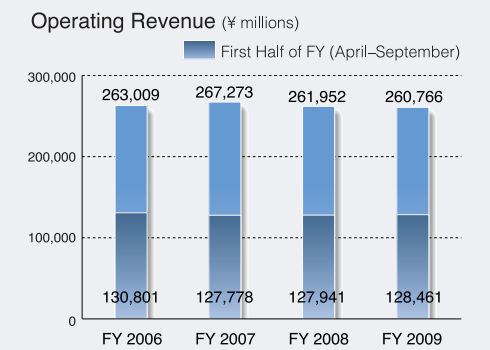
Business Performance

FY 2009 Consolidated Operating Revenue by Segment (¥ millions)



* FY 2009: Year ended March 31, 2009

Financial Highlights (consolidated)



Number of Passengers (millions of people)

